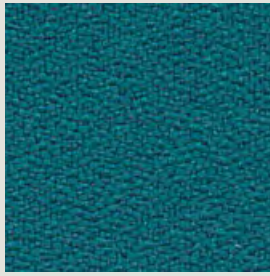


MATERIALIEN & FARBEN BÜROSTÜHLE

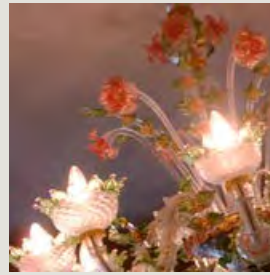
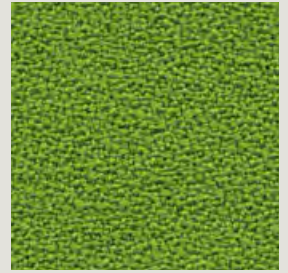
Materials and colours for office chairs | Matériaux & coloris sièges de bureau | Materiali e colori per sedie da ufficio



NATURAL MOOD



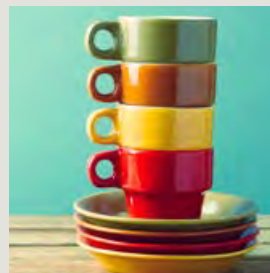
THE NEUTRALS



SMART LUXURY



RETRO REVIVAL



SITAG
swiss style at work



Farbe ist mehr als Information. Sie erzeugt Emotionen, schafft Atmosphäre, erst durch Farbe fühlen wir uns wohl. Farbe weckt Assoziationen, beeinflusst die Stimmung und prägt Marken.

| D | Unsere „Mood Boards“ sollen Ihnen eine Übersicht über unsere Bezugsmaterialien, ihre Farben und Strukturen geben. Sie sollen aber auch Anregung geben für die umfassende Gestaltung eines Ambientes, Inspirationsquelle für Farbkombinationen sein und Hinweise zur Erzeugung von Stimmungen im Raum geben.

| E | **COLOUR IS MORE THAN JUST INFORMATION.** It produces emotions and creates atmosphere – we all need colour to feel good. Colour awakens associations, influences moods and distinguishes brands. We provide our Mood Boards to give you an overview of our chair cover material, their available colours and their structures. Our Mood Boards will hopefully also provide stimulation for comprehensive design of your office ambience, sources of inspiration for colour combinations, and support in the creation of your own moods in office space.

| F | **LA COULEUR VÉHICULE PLUS QU'UNE INFORMATION.** Elle suscite des émotions, crée une ambiance et, au final, elle nous met à l'aise. La couleur suscite des associations, conditionne notre humeur et caractérise les marques. NOS «mood boards» ont pour objectif de vous donner un aperçu sur nos tissus d'ameublement, leurs coloris et textures. Ils ont aussi pour ambition d'encourager la conception globale de votre intérieur, ils sont une source d'inspiration au titre de la combinaison des couleurs et ils ont pour prétention d'orienter la démarche créative visant les ambiances d'espace.

| I | **IL COLORE VA OLTRE L'INFORMAZIONE.** Esso genera emozioni, crea atmosfera e ci fa sentire a nostro agio. Il colore stimola associazioni, influenza l'umore e caratterizza marchi. I nostri „Mood boards“ vogliono fornirvi un quadro panoramico dei nostri materiali di rivestimento, con i loro colori e le loro strutture. Essi dovrebbero però anche darvi dei suggerimenti su come poter realizzare un ambiente nel suo complesso, farvi da ispirazione per abbinamenti di colore e indicarvi come creare una determinata atmosfera nei vari locali.



SMART LUXURY

| D | STIL, ELEGANZ UND KLASSE
kommen in dieser Farbgruppe zum Ausdruck. Sattes Rot, das an edlen Rotwein erinnert, wird durch Blau- und Grautöne wie Marine und Anthrazit in Szene gesetzt.

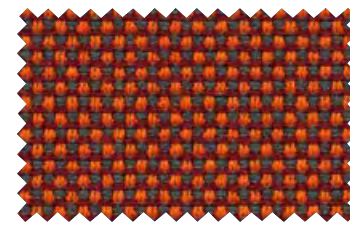
| E | THIS COLOUR GROUP VIVIDLY EXPRESSES STYLE, ELEGANCE AND CLASS. Rich and deep red – that reminds us of quality red wine – is dramatically displayed together in contrast with blue and grey shades such as navy blue and anthracite (slate grey).

| F | CE GROUPE DE COLORIS EXPRIME LE STYLE, L'ÉLÉGANCE ET LA CLASSE. Le rouge soutenu suggérant le vin rouge est joliment mis en lumière par les teintes bleues et grises telles que le bleu marine et l'anthracite.

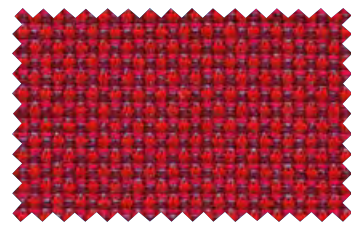
| I | QUESTO GRUPPO DI COLORI ESPRIME STILE, ELEGANZA E CLASSE. Un rosso intenso che ricorda quello di un buon vino viene messo in scena con tonalità di blu e grigio come l'azzurro marino e l'antracite.



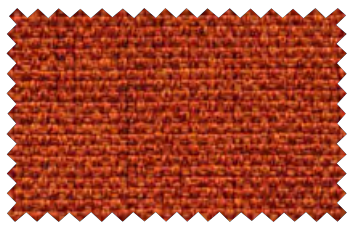
SMART LUXURY



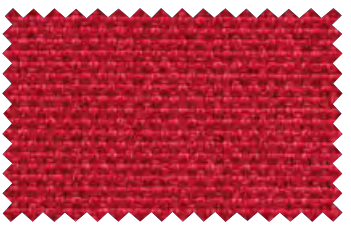
BF50 cognac | cognac
cognac | cognac



BF60 rot | red
rouge | rosso



ME55 orange | orange
orange | arancia



ME60 rot | red
rouge | rosso



C062 bordeaux | bordeaux
bordeaux | bordeaux



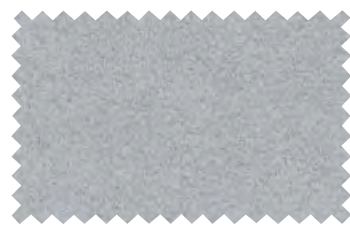
C060 rot | red
rouge | rosso



C028 braun | brown
brun | brun



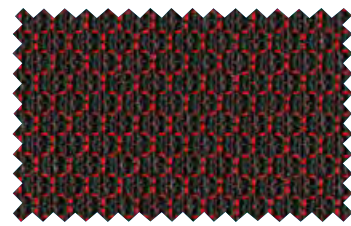
C082 dunkelblau | dark blue
bleu foncé | blu scuro



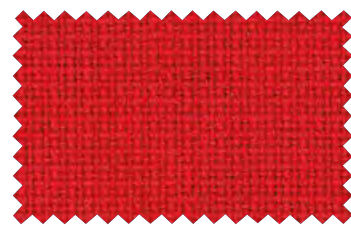
C070 hellgrau | bright grey
gris clair | grigio chiaro



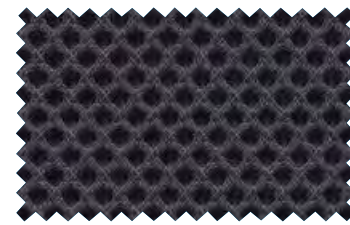
C000 weiss | white
blanc | bianco



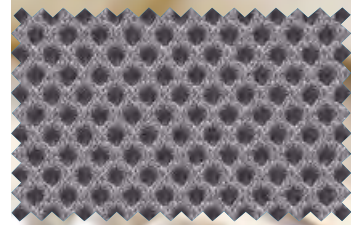
ST60 rot | red
rouge | rosso



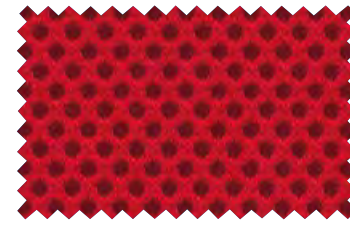
FA60 rot | red
rouge | rosso



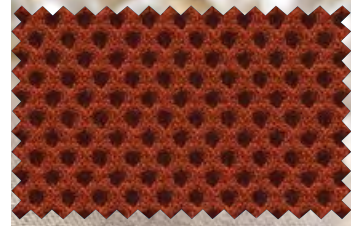
RU77 dunkelgrau | dark grey
gris foncé | grigio scuro



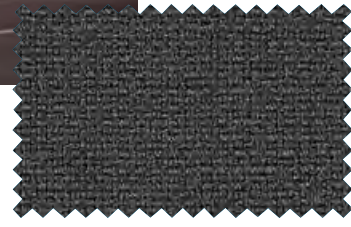
RU75 grau | grey
gris | grigio



RU60 rot | red
rouge | rosso



RU20 rotbraun | reddish brown
brun rouge | marrone rosso



FA75 dunkelgrau | dark grey
gris foncé | grigio scuro



ST85 schwarz | black
noir | nero



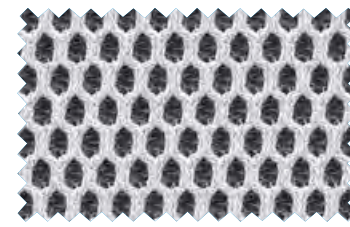
LS02 weiss | white
blanc | bianco



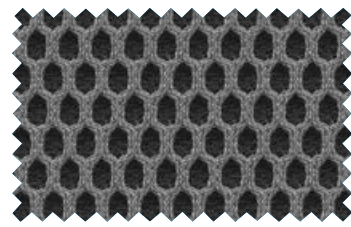
LS30 mokka | mocha
moka | mocca



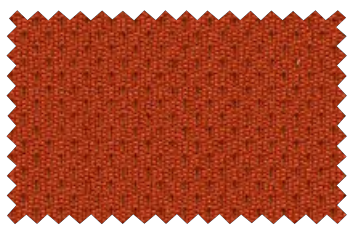
LS50 cognac | cognac
cognac | cognac



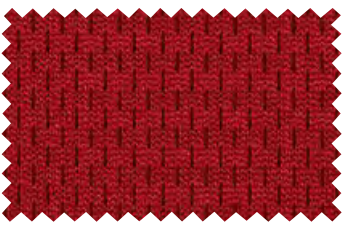
OM02 weiss | white
blanc | bianco



OM72 hellgrau | bright grey
gris clair | grigio chiaro



FL50 cognac | cognac
cognac | cognac



FL60 rot | red
rouge | rosso



LS60 rot | red
rouge | rosso



LS82 marine | navy blue
bleu marine | marineblu

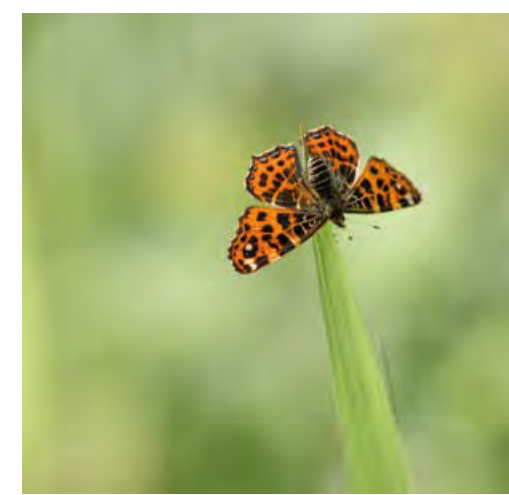
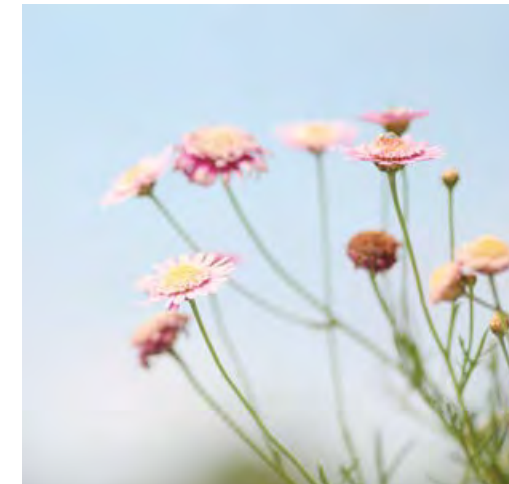
NATURAL MOOD

| D | SANFTES BLAU UND WARME BRAUNTÖNE UND ZURÜCKHALTENDES GRÜN. Diese Farbfamilie steht ganz im Zeichen der Natur. Grüne Strukturstoffe werden kombiniert mit gedecktem Weiss und setzen Ihren Raum in ein erfrischendes und zugleich ruhiges Licht.



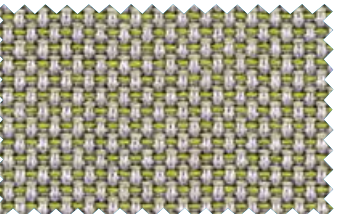
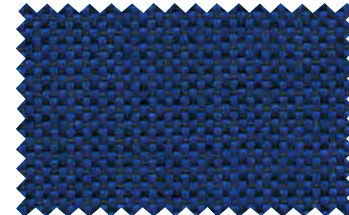

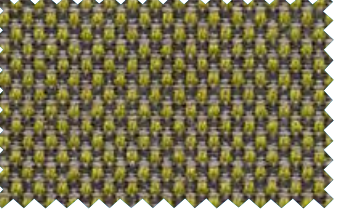

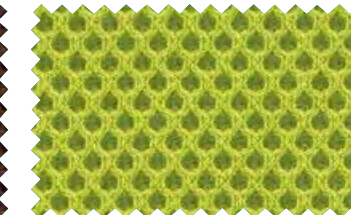
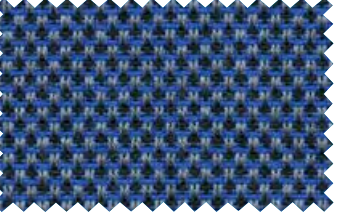
| E | SOFT BLUE, WARM BROWN SHADES AND DISCREET GREEN. This colour family belongs unmistakably to the signs of nature. Green structure materials are combined with subdued white – which puts your room in a refreshing and, at the same time, a peaceful light.

| F | AVEC SON BLEU PÂLE, SES TEINTES BRUNES CHALEUREUSES ET SON VERT SOBBRE, cette famille de couleurs est entièrement placée sous le signe de la nature. Les tissus structurés en vert côtoient le blanc discret et baignent votre intérieur dans une lumière à la fois de fraîcheur et de sérénité.

| I | BLU MORBIDO, CALDE TONALITÀ DI MARRONE E VERDE NON TROPPO ACCESO. Questo gruppo di colori si presenta del tutto all'insegna della natura. Tessuti verdi strutturati vengono abbinati a un bianco sporco trasponendo il vostro spazio in una luce vitalizzante e al contempo pacata.



NATURAL MOOD

 S180 blau blue bleu blu	 BF24 hellbraun bright brown brun clair marrone chiaro	 BF34 hellgrün bright green vert clair verde chiaro
 S182 blau-punkt dotted blue pointillé bleu blu punteggiato	 BF81 hellblau bright blue bleu clair celeste	 BF40 dunkelgrün dark green vert foncé verde scuro
 RU30 dunkelbraun dark brown brun foncé marrone scuro	 RU34 grün green vert verde	 BF82 dunkelblau dark blue bleu foncé blu scuro

 RU63 violett blue bleu blu	 RU01 natur ecru écru ecru	 RU82 dunkelblau dark blue bleu foncé blu scuro
---	--	---



 FL00 beige beige beige beige	 FL80 blau blue bleu blu	 LS50 cognac cognac cognac cognac		
 S130 braun brown brun bruno	 S131 braun-punkt dotted brown pointillé brun bruno punteggiato	 LS02 weiss white blanc bianco		
 FA80 blau blue bleu blu	 FA50 cognac cognac cognac cognac	 FA34 hellgrün bright green vert clair verde chiaro	 ST52 gelb yellow jaune giallo*	
 CO80 blau blue bleu blu	 CO34 hellgrün bright green vert clair verde chiaro	 CO00 weiss white blanc bianco	 CO25 mittelbraun medium brown brun moyen marrone medio	 CO28 braun brown brun marrone

 EX82 krongelb royal blue bleu royal blue Savoia	 EX80 blau blue bleu blu	 EX63 violett violet violet viola	 EX34 hellgrün bright green vert clair verde chiaro
 EX24 hellbraun bright brown brun clair marrone chiaro	 ME00 beige beige beige beige	 ME02 braungrau brownish grey gris brun grigio brunastro	 ME34 hellgrün bright green vert clair verde chiaro
 ME80 blau blue bleu blu	 ME30 dunkelbraun dark brown brun foncé marrone scuro	 ME24 hellbraun bright brown brun clair marrone chiaro	

RETRO REVIVAL

| D | KRÄFTIGES ORANGE, SAMTIGES LILA UND SATTES PETROL kreieren ein junges und modernes Farbspiel, lässt aber auch Reminiszenzen an die 70er Jahre anklingen. Die aufregenden Kontraste werden durch sanfte Strukturen in Opal oder Hellgrau ausgeglichen.

| E | VIVID ORANGE, VELVETY MAUVE AND RICH PETROL – together, they create a fresh and modern play of colours. But they also call up memories of the 1970s. The exciting contrasts are harmonized by gentle structures in opal and light-grey colours.

| F | L'ORANGE VIF, LE MAUVE VELOURÉ ET LE PÉTROLE FONCÉ créent un jeu de couleurs jeune et moderne, mais ravivent aussi les souvenirs des années 70. Les contrastes saisissants trouvent leur harmonie dans les structures pâles aux couleurs d'opale ou gris clair.

| I | UN ARANCIONE INTENSO, UN LILLÀ VELLUTATO E UN FORTE NERO PETROLIO creano un gioco di colori giovanile e moderno ma fanno anche rivivere ricordi degli anni Settanta. Questi accattivanti contrasti vengono compensati da strutture morbide in opalino o grigio chiaro.



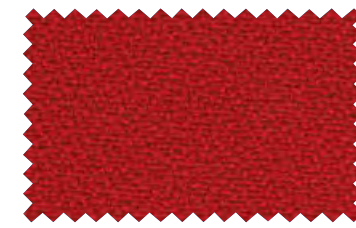
RETRO REVIVAL



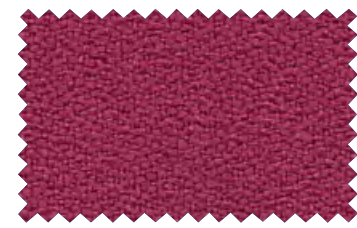
C055 orange | orange
orange | arancia



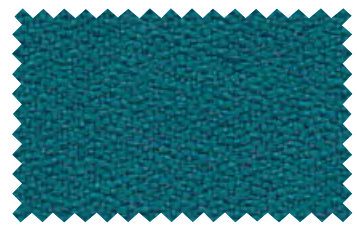
C025 mittelbraun | medium brown
brun moyen | marrone medio



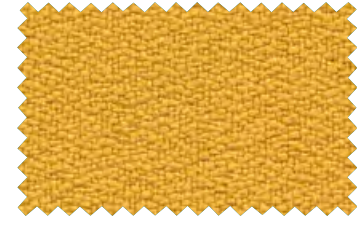
EX60 rot | red
rouge | rosso



EX65 lila | mauve
mauve | lila



EX37 petrol | petrol
pétrol | petrol



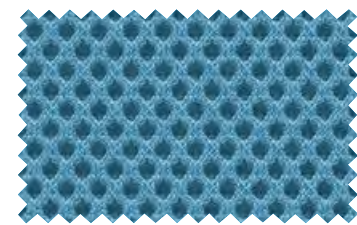
EX52 gelb | yellow
jaune | giallo



EX54 hellorange | bright orange
orange clair | arancia chiaro



FA55 orange | orange
orange | arancia



RU38 türkis | turquoise
bleu vert | turchese



RU00 beige | beige
beige | beige



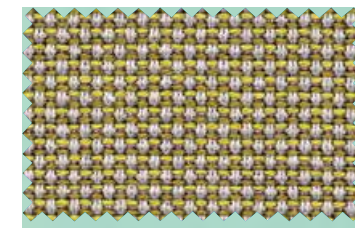
RU55 orange | orange
orange | arancia



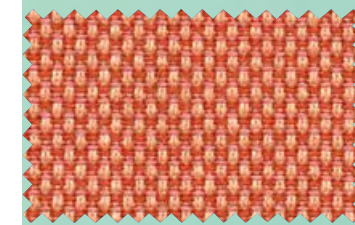
DC30 dunkelbraun | dark brown
brun foncé | marrone scuro



DC61 rost | rust
rouille | ruggine



BF36 opal | opal
opal | opal



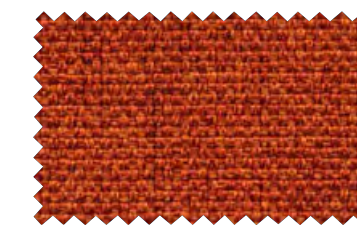
BF55 orange | orange
orange | arancia



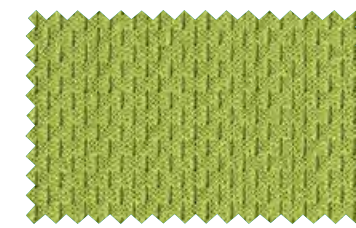
LS09 sand | sandy
sable | sabbia



LS30 mokka | mocha
moka | mocha



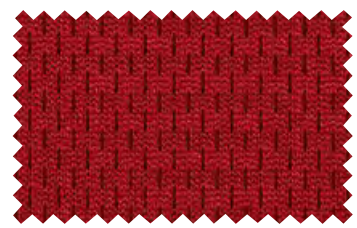
ME55 orange | orange
orange | arancia



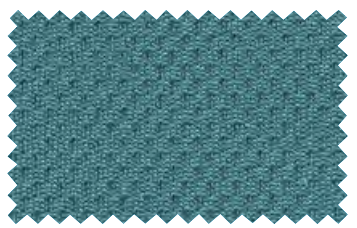
FL34 hellgrün | bright green
vert clair | verde chiaro



FL55 orange | orange
orange | arancia



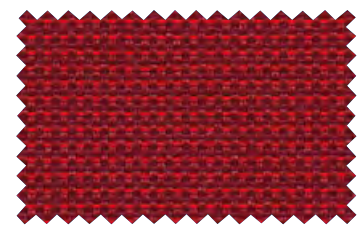
FL60 rot | red
rouge | rosso



FL37 petrol | petrol
petrol | petrol



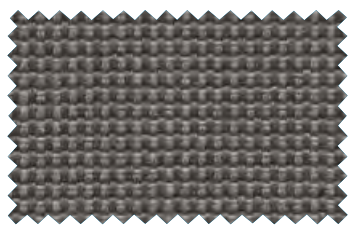
SI64 dunkelrot | dark red
rouge foncé | rosso scuro



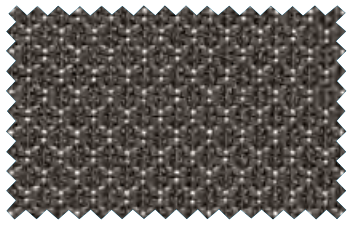
SI65 dunkelrot-punkt | dotted
dark red | pointillé rouge foncé |
rosso scuro punteggiato



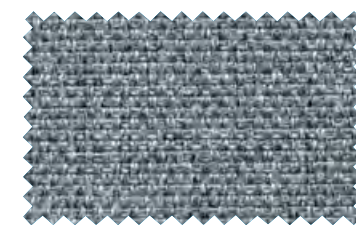
SI70 perigräu | pearl grey
gris perlé | grigio perla



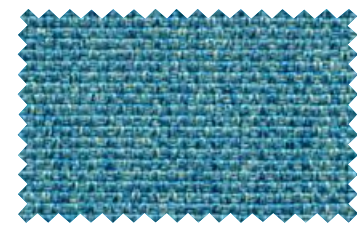
SI71 perigräu-punkt | dotted pearl
grey | pointillé gris perlé |
grigio perla punteggiato



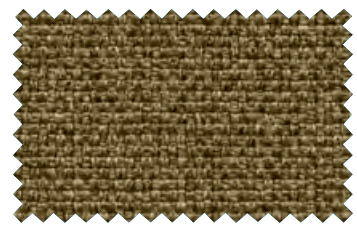
SI70 hellgräu | bright grey
gris clair | lichtgrijs



ME70 hellgräu | light grey
gris clair | grigio chiaro



ME38 türkis | turquoise
bleu vert | turchese



ME35 grün | green
vert | verde

THE NEUTRALS



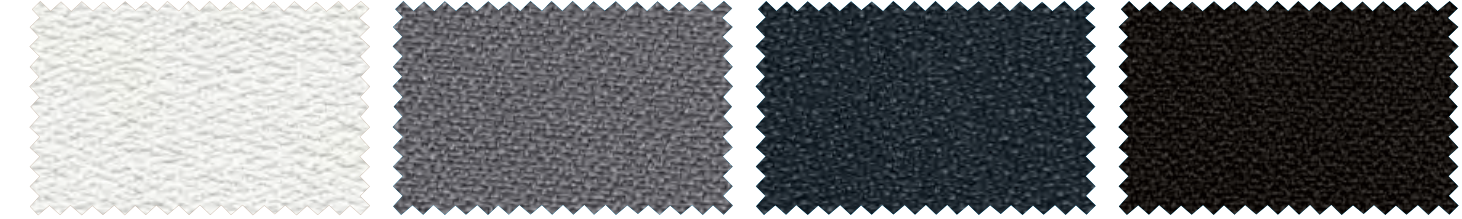
| D | GEDÄMPFTES BLAU UND DUNKLE GRAUTÖNE erschaffen Harmonie, die von der Ähnlichkeit lebt. Feine Nuancen von Weiss bis Schwarz werden kombiniert mit Dunkelblau. Es entsteht eine unaufdringlich geschmackvolle Atmosphäre.

| F | LE BLEU MAT ET LES TEINTES DE GRIS foncé créent une harmonie inspirée de la similitude. Les nuances délicates du blanc au noir sont mariées au bleu foncé donnant ainsi naissance à une ambiance discrète de style.

| E | COMBINED MUTED BLUE AND DARK GREY SHADES create a harmony that arises from their similarity. Fine nuances ranging from white to black are likewise combined with dark blue. The result: an unobtrusive, aesthetic atmosphere.

| I | UN BLU TENUE E TONALITÀ DI GRIGIO SCURE creano un'armonia che si definisce per somiglianza. Leggere sfumature dal bianco al nero vengono abbinata a un blu scuro contribuendo a creare un'atmosfera elegantemente non invadente.

THE NEUTRALS

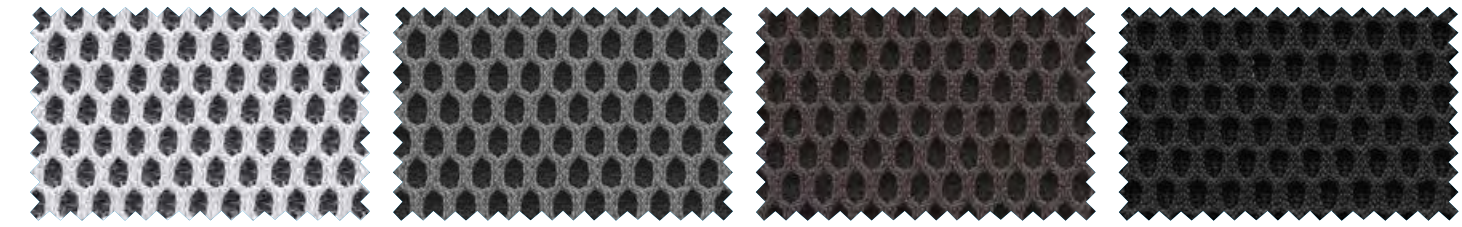


EX02 weiss | white
blanc | bianco

EX75 grau | grey
gris | grigio

EX77 anthrazit | anthracite
anthracite | antracite

EX85 schwarz | black
noir | nero



OM02 weiss | white
blanc | bianco

OM72 hellgrau | bright grey
gris clair | grigio chiaro

OM77 anthrazit | anthracite
anthracite | antracite

OM85 schwarz | black
noir | nero



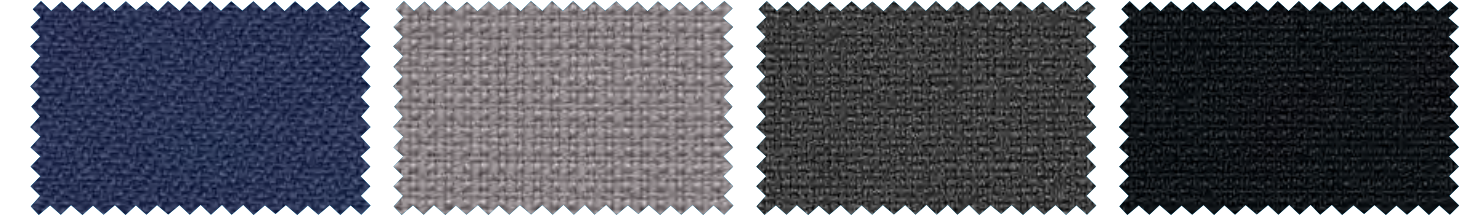
LS72 grau | grey
gris | grigio



LS02 weiss | white
blanc | bianco



LS85 schwarz | black
noir | nero



EX83 dunkelblau | dark blue
bleu foncé | blu scuro

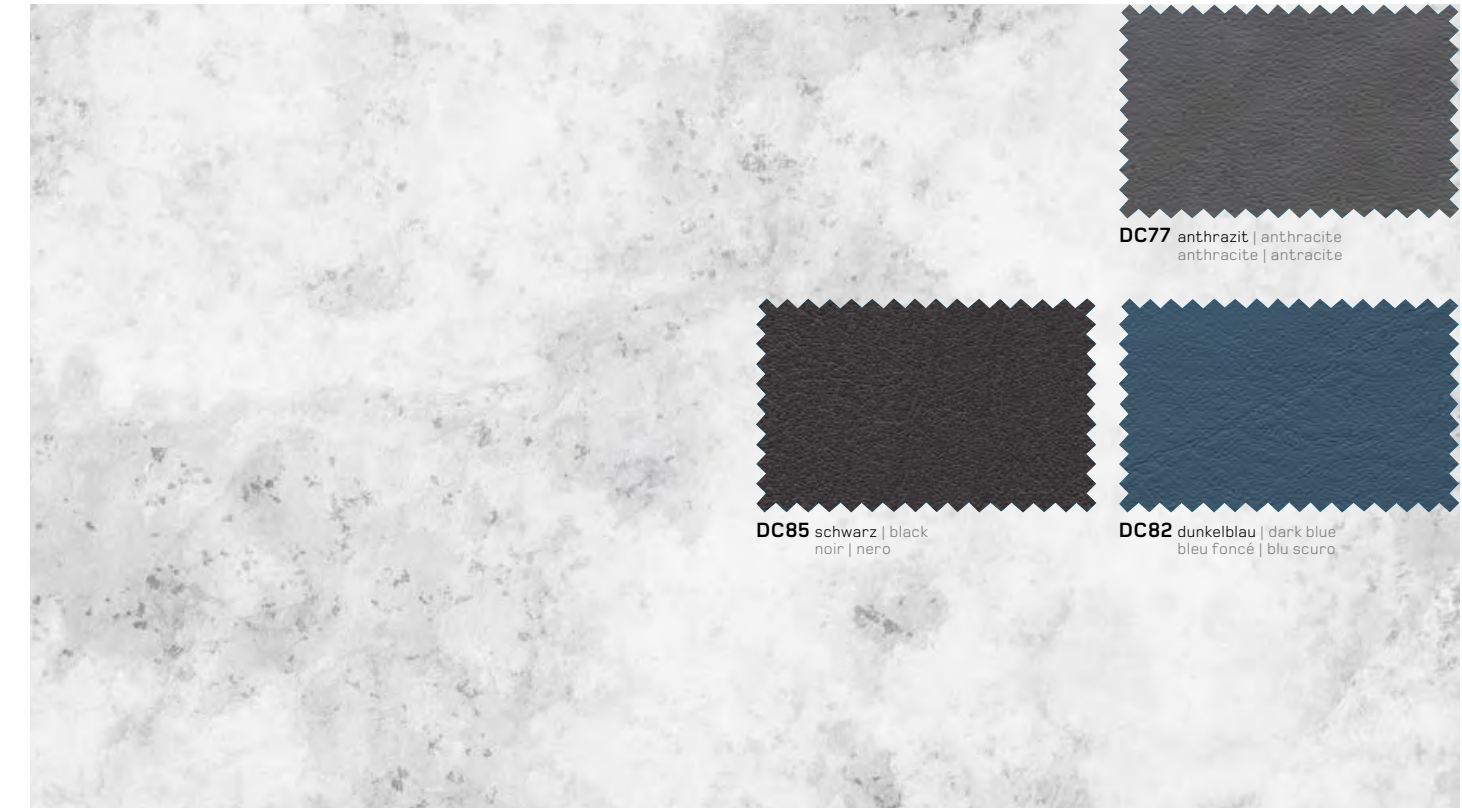
FA71 mausgrau | mouse grey
gris souris | grigio topo

FA75 dunkelgrau | dark grey
gris foncé | grigio scuro

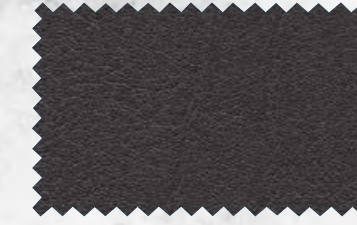
FA85 schwarz | black
noir | nero



FA82 dunkelblau | dark blue
bleu foncé | blu scuro



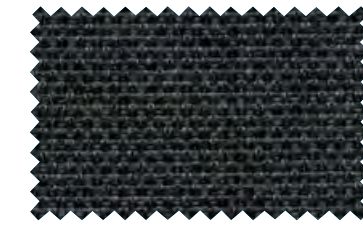
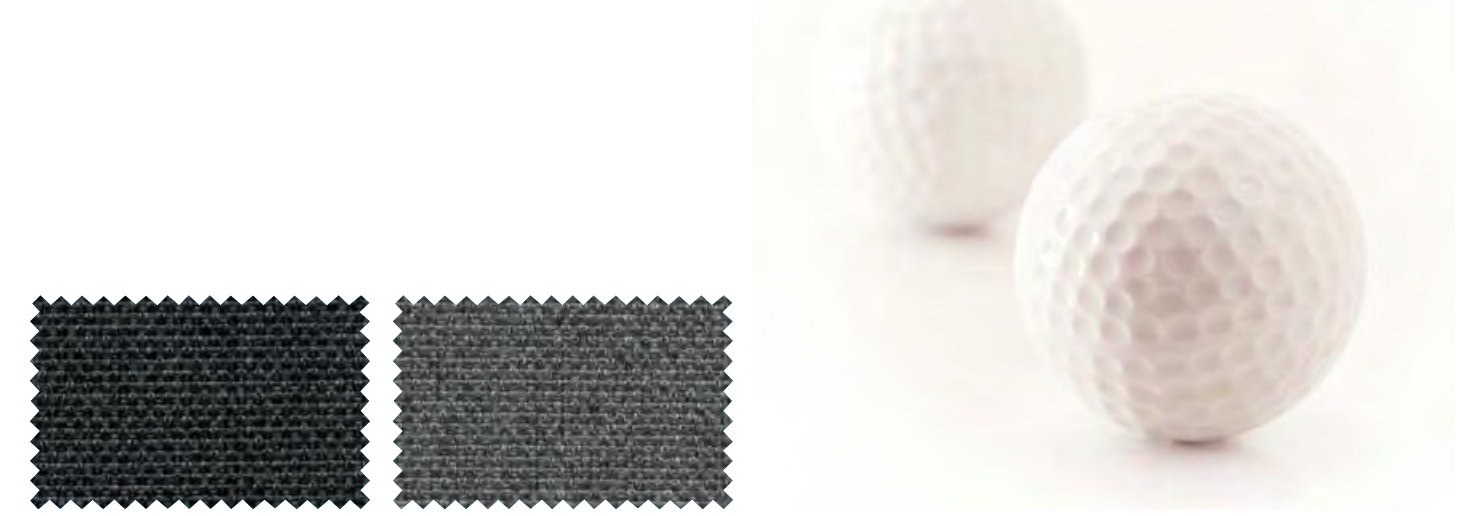
DC77 anthrazit | anthracite
anthracite | antracite



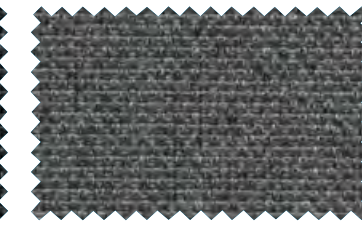
DC85 schwarz | black
noir | nero



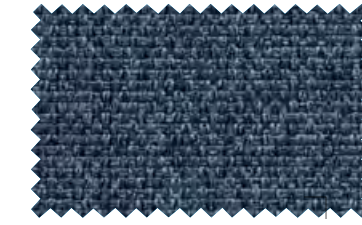
DC82 dunkelblau | dark blue
bleu foncé | blu scuro



ME85 schwarz | black
noir | nero



ME77 dunkelgrau | dark grey
gris foncé | grigio scuro



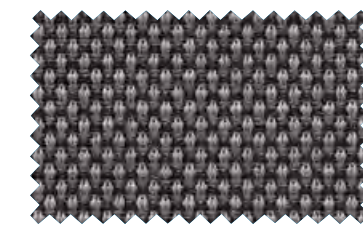
ME84 nachtblau | bright blue
bleu clair | celeste



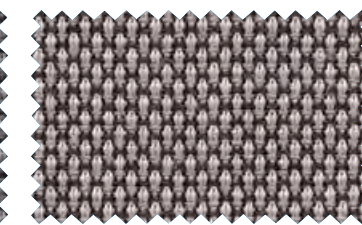
SI85 schwarz | black
noir | nero



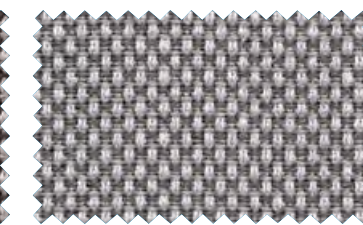
SI86 schwarz-punkt | dotted black
pointillé noir | nero punteggiato



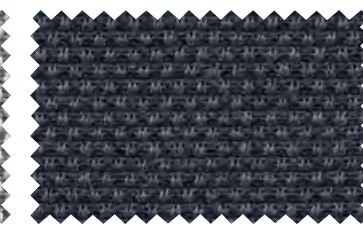
BF77 dunkelgrau | dark grey
gris foncé | grigio scuro



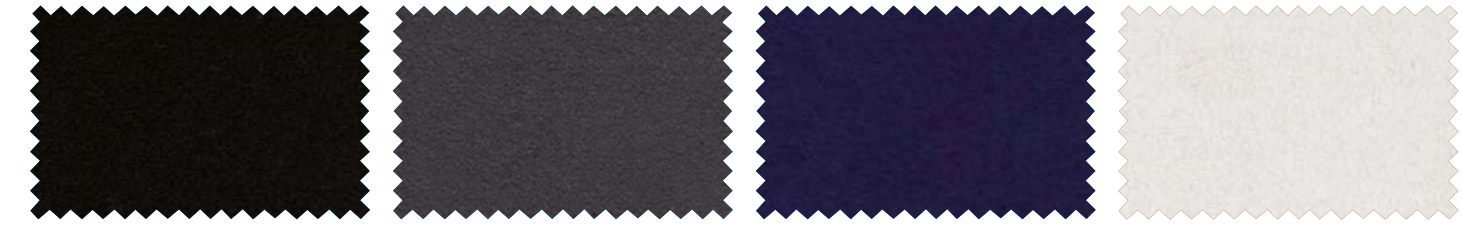
BF75 grau | grey
gris | grigio



BF70 hellgrau | light grey
gris clair | grigio chiaro



BF85 schwarz | black
noir | nero

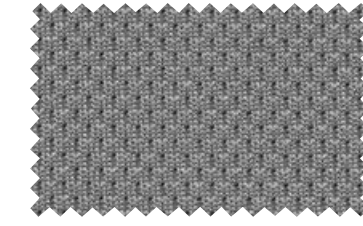


CO85 schwarz | black
noir | nero

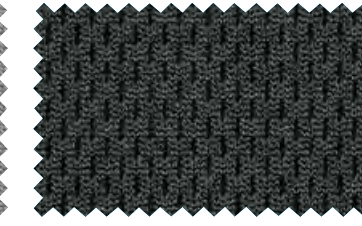
CO77 anthrazit | anthracite
anthracite | antracite

CO82 dunkelblau | dark blue
bleu foncé | blu scuro

CO00 weiss | white
blanc | bianco



FL70 hellgrau | light grey
gris clair | grigio chiaro



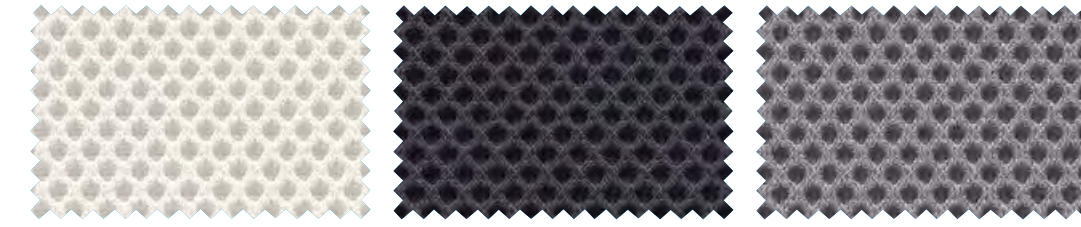
FL75 dunkelgrau | dark grey
gris foncé | grigio scuro



FL82 dunkelblau | dark blue
bleu foncé | blu scuro



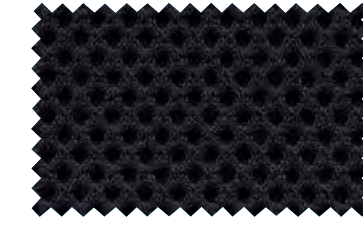
FL85 schwarz | black
noir | nero



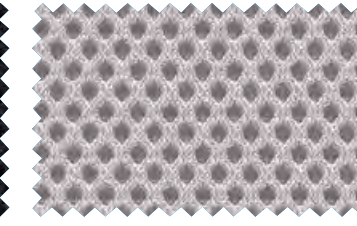
RU02 weiss | white
blanc | bianco

RU77 dunkelgrau | dark grey
gris foncé | grigio scuro

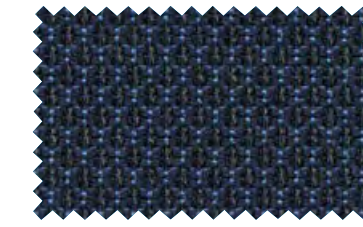
RU75 grau | grey
gris | grigio



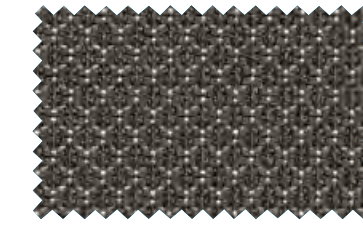
RU85 schwarz | black
noir | nero



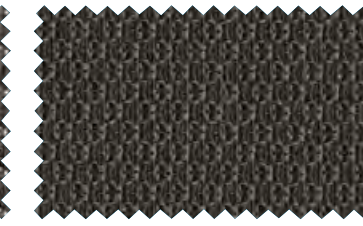
RU70 hellgrau | light grey
gris clair | grigio chiaro



ST80 blau | blue
bleu | blaug



ST70 hellgrau | bright grey
gris clair | lichtgrün



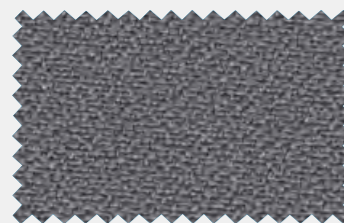
ST77 dunkelgrau | dark grey
gris foncé | dunkelgrün

EXTREME

| D | 100% Recycle Polyester FR | E | 100% Recycled Polyester FR | F | 100% Polyester Recyclé FR | I | 100 % Poliestere riciclato FR



EX02 weiss | white
blanc | bianco



EX75 grau | grey
gris | grigio



EX77 anthrazit | anthracite
anthracite | antracite



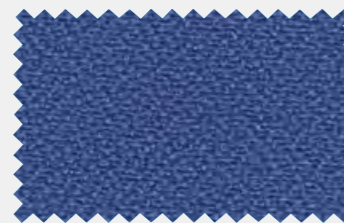
EX85 schwarz | black
noir | nero



EX83 dunkelblau | dark blue
bleu foncé | blu scuro



EX82 königsblau | royal blue
bleu royal | blu Savoia



EX80 blau | blue
bleu | blu



EX37 petrol | petrol
pétrol | petrol



EX34 hellgrün | bright green
vert clair | verde chiaro



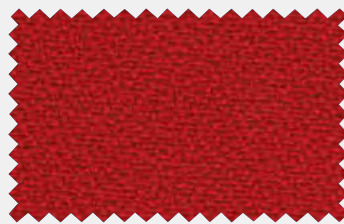
EX24 hellbraun | bright brown
brun clair | marrone chiaro



EX52 gelb | yellow
jaune | giallo



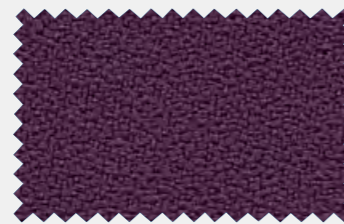
EX54 hellorange | bright orange
orange clair | arancia chiaro



EX60 rot | red
rouge | rosso



EX65 lila | mauve
mauve | lila



EX63 violett | violet
violet | violet

MEDLEY™

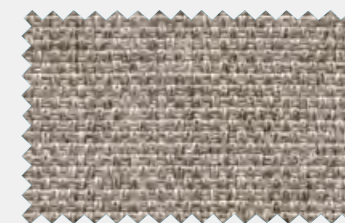
| D | 100% Polyester | E | 100% Polyester | F | 100% Polyester | I | 100 % Poliestere



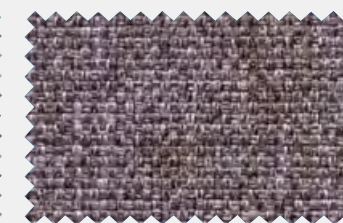
ME35 grün | green
vert | verde



ME34 hellgrün | bright green
vert clair | verde chiaro



ME00 beige | beige
beige beige



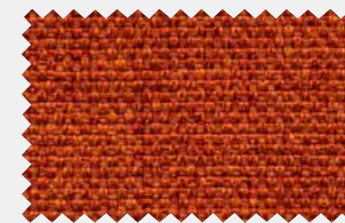
ME02 braungrau | brownish grey
gris brun | grigio brunastro



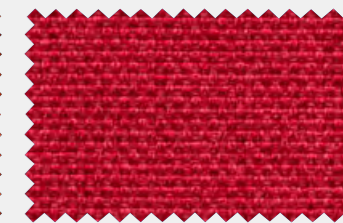
ME24 hellbraun | bright brown
brun clair | marrone chiaro



ME30 dunkelbraun | dark brown
brun foncé | marrone scuro



ME55 orange | orange
orange | arancia



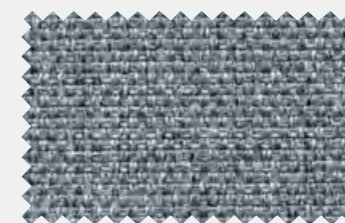
ME60 rot | red
rouge | rosso



ME85 schwarz | black
noir | nero



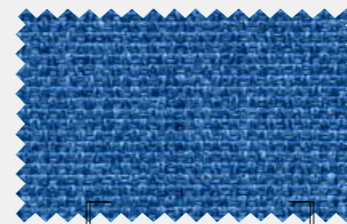
ME77 dunkelgrau | dark grey
gris foncé | grigio scuro



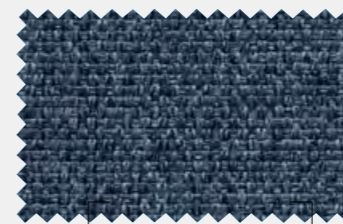
ME70 hellgrau | light grey
gris clair | grigio chiaro



ME38 türkis | turquoise
bleu vert | turchese



ME80 blau | blue
bleu | blu



ME84 nachtblau | bright blue
bleu clair | celeste



SIENA

|D| 100% Polyester Trevira CS |E| 100% Polyester Trevira CS |F| 100% Polyester Trevira CS |I| 100% Poliestere Trevira CS



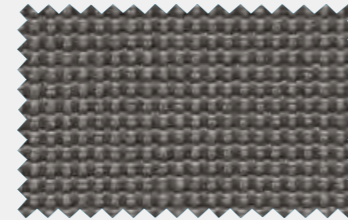
SI85 schwarz | black
noir | nero



SI86 schwarz-punkt | dotted black
pointillé noir | nero punteggiato



SI70 perlgrau | pearl grey
gris perlé | grigio perla



SI71 perlgrau-punkt | dotted pearl grey
pointillé gris perlé | grigio perla punteggiato



SI80 blau | blue
bleu | blu



SI82 blau-punkt | dotted blue
pointillé bleu | blu punteggiato



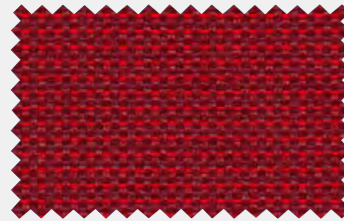
SI30 braun | brown
brun | bruno



SI31 braun-punkt | dotted brown
pointillé brun | bruno punteggiato



SI64 dunkelrot | dark red
rouge foncé | rosso scuro



SI65 dunkelrot-punkt | dotted
dark red | pointillé rouge foncé |
rosso scuro punteggiato

FLEX

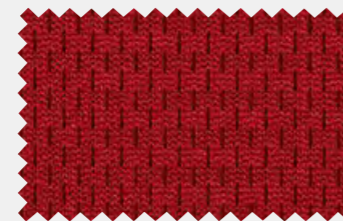
|D| 100% Polyester |E| 100% Polyester |F| 100% Polyester |I| 100% Poliestere



FL55 orange | orange
orange | arancia



FL50 cognac | cognac
cognac | cognac



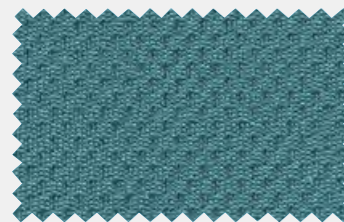
FL60 rot | red
rouge | rosso



FL82 dunkelblau | dark blue
bleu foncé | blu scuro



FL80 blau | blue
bleu | blu



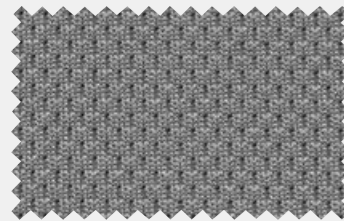
FL37 petrol | petrol
petrol | petrol



FL34 hellgrün | bright green
vert clair | verde chiaro



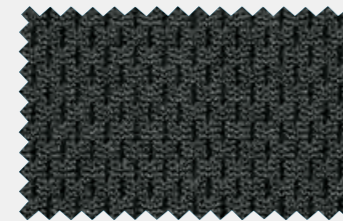
FL00 beige | beige
beige | beige



FL70 hellgrau | light grey
gris clair | grigio chiaro



FL85 schwarz | black
noir | nero



FL75 dunkelgrau | dark grey
gris foncé | grigio scuro



RUNNER™



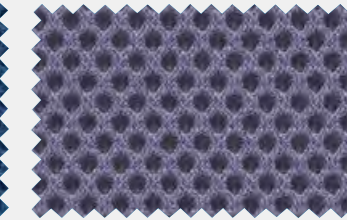
RU85 schwarz | black
noir | nero



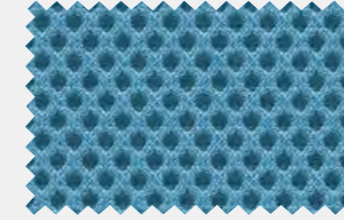
RU77 dunkelgrau | dark grey
gris foncé | grigio scuro



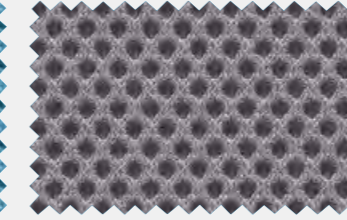
RU82 dunkelblau | dark blue
bleu foncé | blu scuro



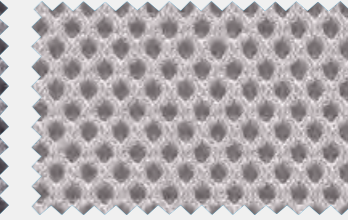
RU63 violett | violet
violett | viola



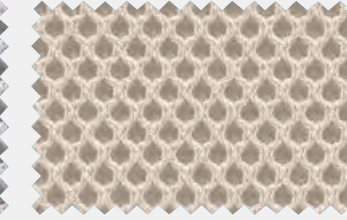
RU38 türkis | turquoise
bleu vert | turchese



RU75 grau | grey
gris | grigio



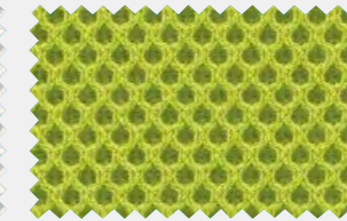
RU70 hellgrau | light grey
gris clair | grigio chiaro



RU01 natur | ecru
écru | écru



RU02 weiss | white
blanc | bianco



RU34 grün | green
vert | verde



RU00 beige | beige
beige | beige



RU55 orange | orange
orange | arancio



RU60 rot | red
rouge | rosso



RU20 rotbraun | reddish brown
brun rouge | marrone rosso



RU30 dunkelbraun | dark brown
brun foncé | marrone scuro



FAME

|D| 95% Kammgarnwolle / 5% Polyamid |E| 95% Worsted wool / 5% polyamide |F| 95% Laine vierge peignée / 5% polyamide |I| 95% lana pettinata / 5% poliammide



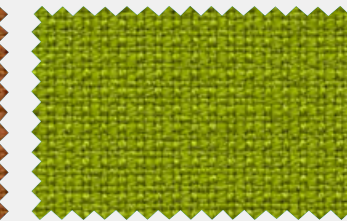
FA55 orange | orange
orange | arancia



FA60 rot | red
rouge | rosso



FA50 cognac | cognac
cognac | cognac



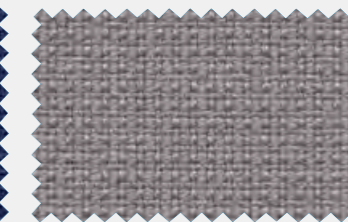
FA34 hellgrün | bright green
vert clair | verde chiaro



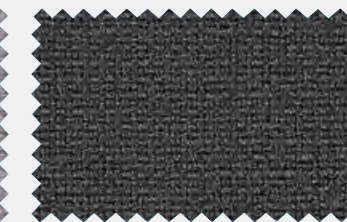
FA80 blau | blue
bleu | blu



FA82 dunkelblau | dark blue
bleu foncé | blu scuro



FA71 mausgrau | mouse grey
gris souris | grigio topo



FA75 dunkelgrau | dark grey
gris foncé | grigio scuro

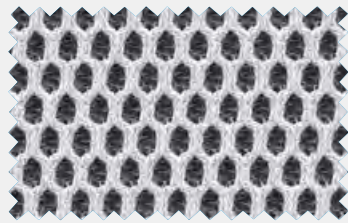


FA85 schwarz | black
noir | nero

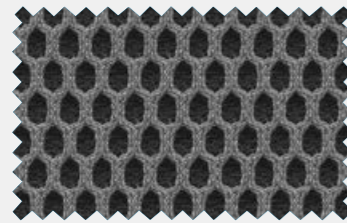


OMEGA

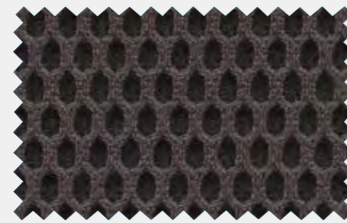
|D| 100% Polyester |E| 100% Polyester |F| 100% Polyester |I| 100% Poliestere



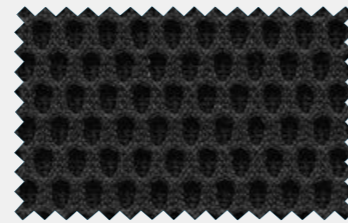
OM02 weiss | white
blanc | bianco



OM72 hellgrau | bright grey
gris clair | grigio chiaro



OM77 anthrazit | anthracite
anthracite | antracite



OM85 schwarz | black
noir | nero

DECOVIN CONTRACT

|D| Kunstleder Oberfläche 89% PVC-Compound, Träger 11% PE/CO |E| Kunstleder surface 89% PVC-Compound, Support 11% PE/CO
|F| Kunstleder surface 89% PVC-Compound, Support 11% PE/CO |I| Similpelle 89% PVC-Compound, Supporto 11% PE/CO



DC30 dunkelbraun | dark brown
brun foncé | marrone scuro



DC61 rost | rust
rouille | ruggine



DC77 anthrazit | anthracite
anthracite | antracite



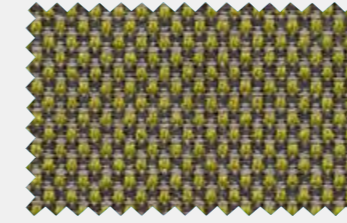
DC85 schwarz | black
noir | nero



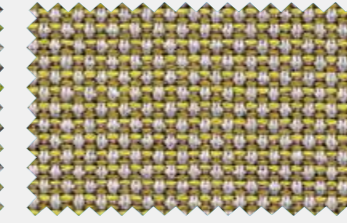
DC82 dunkelblau | dark blue
bleu foncé | blu scuro

BREEZE FUSION™

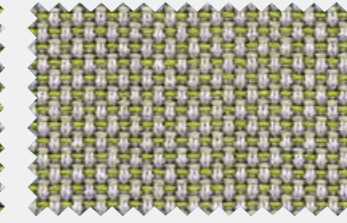
|D| 88% Wolle, 12% Polyamide |E| 88% Wool, 12% Polyamide |F| 88% Laine, 12% Polyamide |I| 88% Lana, 12% Polyamide



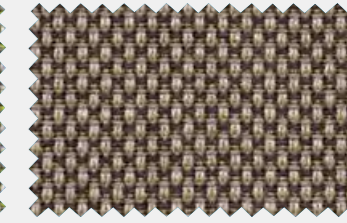
BF40 dunkelgrün | dark green | vert
foncé | verde scuro



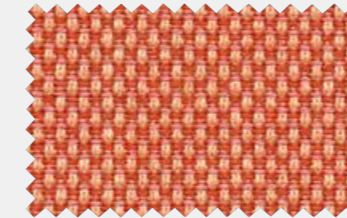
BF36 opal | opal
opal | opal



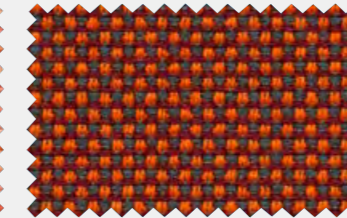
BF34 hellgrün | bright green
vert clair | verde chiaro



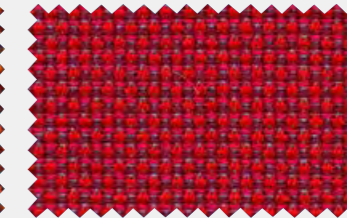
BF24 hellbraun | bright brown | brun clair | marrone chiaro



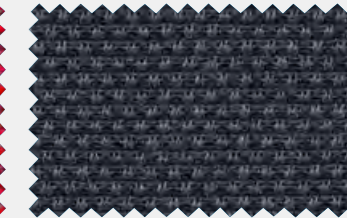
BF55 orange | orange
orange | arancio



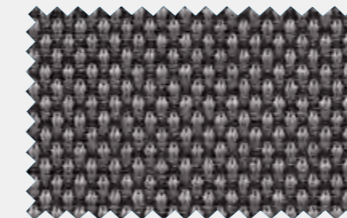
BF50 cognac | cognac
cognac | cognac



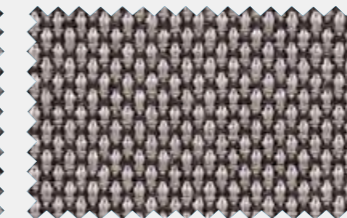
BF60 rot | red
rouge | rosso



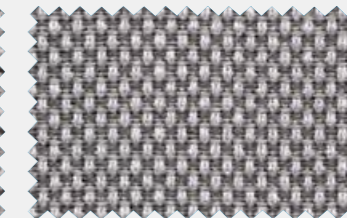
BF85 schwarz | black
noir | nero



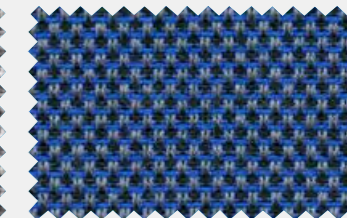
BF77 dunkelgrau | dark grey
gris foncé | grigio scuro



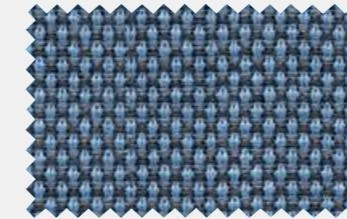
BF75 grau | grey
gris | grigio



BF70 hellgrau | light grey
gris clair | grigio chiaro



BF82 dunkelblau | dark blue
bleu foncé | blu scuro



BF81 hellblau | bright blue
bleu clair | celeste

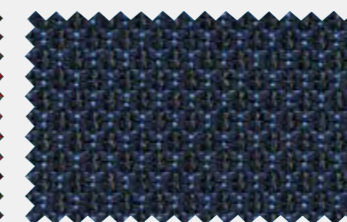


STRONG

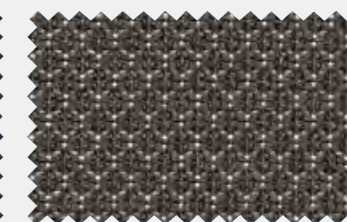
|D| 62% Gradura, 14% zertifizierte Farmwolle, 10% Red. Lenzing FWM. 11% PES 3% MTF |E| 62% Gradura, 14% certified wgm wool, 10% red. Lenzing FWM. 11% PES 3% MTF |F| 62% Gradura, 14% zertifizierte Farmwolle, 10% Red. Lenzing FWM. 11% PES 3% MTF |I| 62% Gradura, 14% lana vergine certificato, 10% Red. Lenzing FWM. 11% PES 3% MTF



ST60 rot | red
rouge | rosso



ST80 blau | blue
bleu | blu



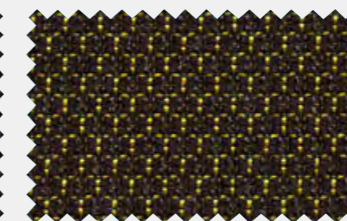
ST70 hellgrau | bright grey
gris clair | grigio chiaro



ST77 dunkelgrau | dark grey
gris foncé | grigio scuro



ST85 schwarz | black
noir | nero



ST52 gelb | yellow
jaune | giallo*



PREISGRUPPE 4

Price category 4 | Catégorie de prix 4 | Categoria di prezzo 4

COMFORT

|D| 88% Polyester / 12% Polyurethane |E| 88% polyester / 12% polyurethane |F| 88% Polyester / 12% Polyuréthane
|I| 88% polyester / 12% poliuretano



C000 weiss | white
blanc | bianco



C070 hellgrau | bright grey
gris clair | grigio chiaro



C077 anthrazit | anthracite
anthracite | antracite



C085 schwarz | black
noir | nero



C082 dunkelblau | dark blue
bleu foncé | blu scuro



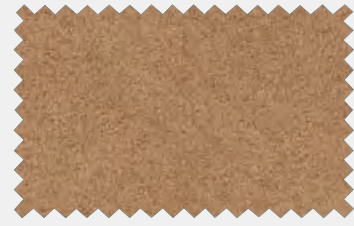
C080 blau | blue
bleu | blu



C034 hellgrün | bright green
vert clair | verde chiaro



C028 braun | brown
brun | bruin



C025 mittelbraun | medium brown
brun moyen | marrone medio



C055 orange | orange
orange | arancia



C060 rot | red
rouge | rosso



C062 bordeaux | bordeaux
bordeaux | bordeaux



PREISGRUPPE LEDER

Price category leather / Catégorie de prix cuir / Prijscategory leer

SELECT

|D| Feinnarbiges Nappaleder |E| Nappa leather smooth grain structure |F| Cuir nappa avec grain fin et élégant
|I| Nappa a grana fine



LS02 weiss | white
blanc | bianco



LS09 sand | sandy
sable | sabbia



LS50 cognac | cognac
cognac | cognac



LS30 mokka | mocha
moka | mocca



LS60 rot | red
rouge | rosso



LS82 marine | navy blue
bleu marine | marineblu



LS72 grau | grey
gris | grigio



LS85 schwarz | black
noir | nero

SPEZIALITÄTEN

specialities | spécialités | specialità

Price category SW | Catégorie de prix SW | Categoria di prezzo SW

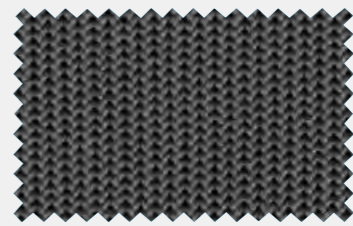
PREISGRUPPE SW

STRICKGEWEBE

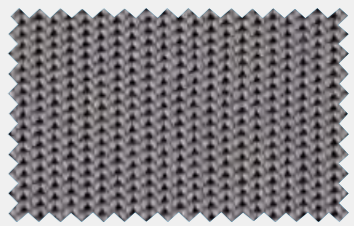
|D| 100% Polyester |E| 100% Polyester |F| 100% Polyester |I| 100% Poliestere



SW85 schwarz | black
noir | nero



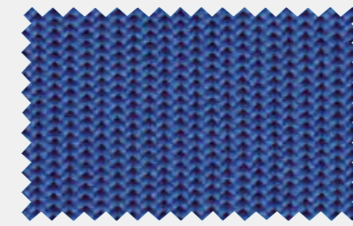
SW71 dunkelgrau | dark grey
gris foncé | grigio scuro



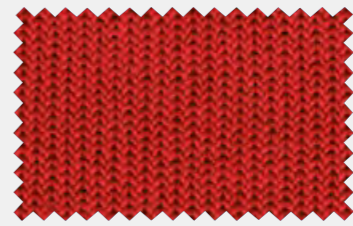
SW70 hellgrau | bright grey
gris clair | grigio chiaro



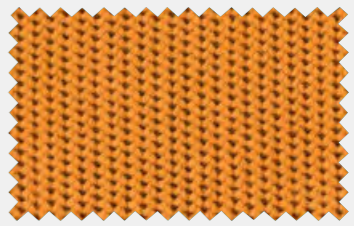
SW41 grün | green
vert | verde



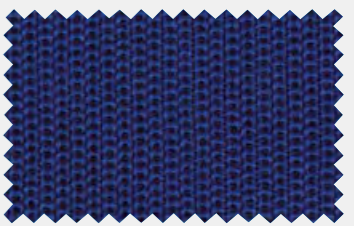
SW80 blau | blue
bleu | blu



SW60 rot | red
rouge | rosso



SW90 orange | orange
orange | arancia

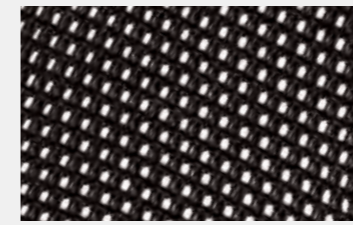


SW81 dunkelblau | dark blue
bleu foncé | blu scuro

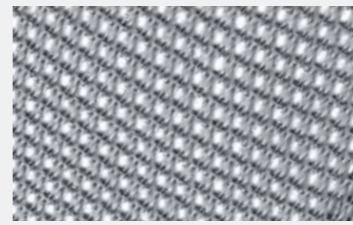
SITAG EL 100

NETZGEWEBE

|D| Netzgewebe 100% Polyamid |E| Woven mesh 100% Polyamid |F| Mailles 100% Polyamide |I| Tessuto a rete 100% poliammide



NSW schwarz | black
noir | nero



NSI silber | silver
argent | argento

SITAGPOINT MESH

NETZGEWEBE

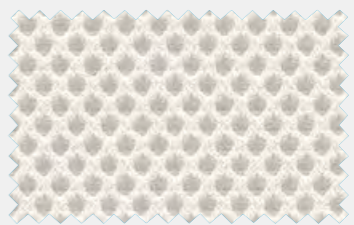
|D| Netzgewebe 100% Polyester |E| Woven mesh 100% Polyester |F| Mailles 100% Polyester |I| 100% Tessuto a rete 100% poliestere



NSW schwarz | black
noir | nero



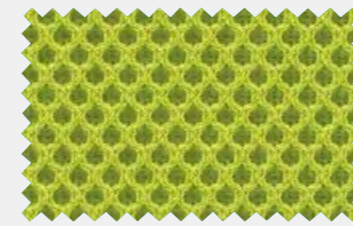
NGR graphitgrau | graphit grey
gris graphite | nero grafito



NWE weiss | white
blanc | bianco



NOR orange | orange
orange | arancia



NGN grün | green
vert | verde





ELEKTRISCH ABLEITFÄHIGE ARBEITSSTÜHLE

Unter ESD (**E**lectro**S**tatic **D**ischarge) versteht man die elektro-statische Entladung aufgeladener Gegenstände oder Personen. Der ESD gerechte Arbeitsstuhl ist ein wesentliches Kriterium für zuverlässige ESD-Schutzmassnahmen am Elektronik-Arbeitsplatz. Für Arbeitsstühle gilt der Ableitwiderstand: $1 \times 10^5 \Omega - 1 \times 10^7 \Omega$ (IEC 61340-5-1).

Der Stuhl ist eine „sekundäre“ ESD Schutzmassnahme und kann eine Erdung über ein Handgelenksband niemals ersetzen.

| E | STATIC-DISSIPATIVE WORK CHAIRS.

Electrostatic discharge (ESD) refers to the dissipation of static electricity from objects or persons that carry a charge of static electricity. The static-dissipative work chair is an essential criterion for reliable ESD protective measures at workplaces involving electronics. The following applies to work chairs for resistance to earth: $1 \times 10^5 \Omega - 1 \times 10^7 \Omega$ (IEC 61340-5-1). **These chairs are only secondary ESD protective measures and cannot substitute for earthing in the form of a wrist strap.**

| F | CHAISES DE TRAVAIL PROTÉGÉES CONTRE LES DÉCHARGES ÉLECTRIQUES.

Par DES (Décharge ElectroStatique), on entend la décharge électrostatique d'objets ou de personnes porteurs de charges statiques. La chaise de travail protégée contre les décharges électrostatiques est une caractéristique essentielle des mesures préventives contre les DES au poste de travail électronique. La résistance de saignée suivante est applicable pour les chaises de travail : $1 \times 10^5 \Omega - 1 \times 10^7 \Omega$ (IEC 61340-5-1). **La chaise constitue une mesure de protection DES «secondaire» et ne saurait jamais remplacer la mise à la terre par un bracelet.**

| I | SEDIE DA LAVORO ANTISTATICHE.

Per ESD (Electro Static Discharge) si intende la scarica elettrostatica di oggetti o persone elettricamente carichi. Una sedia da lavoro antistatica è quindi un criterio fondamentale per attuare affidabili misure protettive ESD su posto di lavoro elettronico. Per le sedie da lavoro vale la resistenza di dispersione: $1 \times 10^5 \Omega - 1 \times 10^7 \Omega$ (IEC 61340-5-1). **La sedia costituisce una misura protettiva ESD «secondaria» e non può mai sostituire una messa a terra mediante nastro da polso.**

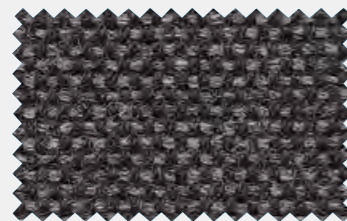
PREISGRUPPE 1

Price category 1 | Catégorie de prix 1 | Categoria di prezzo 1

CLASSIC | D | 100% Polyacryl | E | 100% Polyacryl | F | 100% Polyacrylique | I | 100% Polyacryl



CL91 schwarz | black
noir | nero



CL92 grau meliert | grey mottled
gris moucheté | grigio screziato

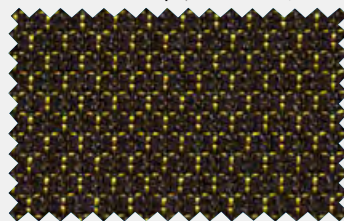


CL93 blau | blue
bleu | blu

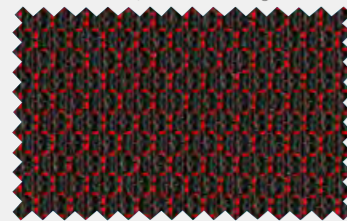
PREISGRUPPE 3

Price category 3 | Catégorie de prix 3 | Categoria di prezzo 3

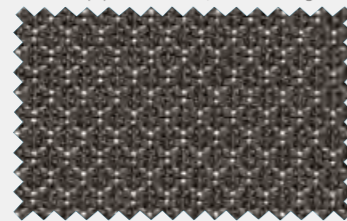
STRONG | D | 62% Gradura, 14% zertifizierte Farmwolle, 10% Red. Lenzing FWM, 11% PES 3% MTF | E | 62% Gradura, 14% certified wgm wool, 10% red. Lenzing FWM, 11% PES 3% MTF | F | 62% Gradura, 14% zertifizierte Farmwolle, 10% Red. Lenzing FWM, 11% PES 3% MTF | I | 62% Gradura, 14% lana vergine certificato, 10% Red. Lenzing FWM, 11% PES 3% MTF



ST91 gelb | yellow
jaune | giallo*



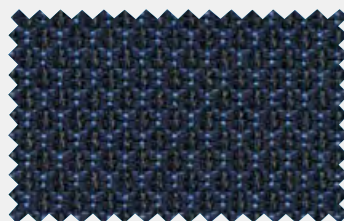
ST92 rot | red
rouge | rosso



ST93 hellgrau | bright grey
gris clair | grigio chiaro



ST94 dunkelgrau | dark grey
gris foncé | grigio scuro



ST95 blau | blue
bleu | blu



ST96 schwarz | black
noir | nero

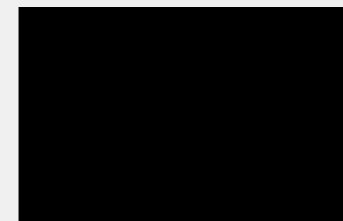
MEDISTAT



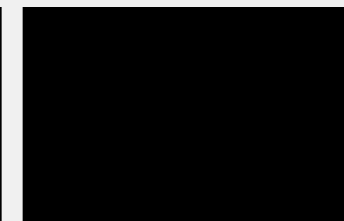
MD91 schwarz | black
noir | nero

| D | Kunstleder Oberfläche 84,5% PVC, Träger 15 % PE | E | Synthetic leather, surface 84,5% PVC, support 15 % PE
| F | Similicuir, surface 84,5% PVC, support 15 % PE | I | Similpelle, superficie 84,5% PVC, supporto 15 % PE

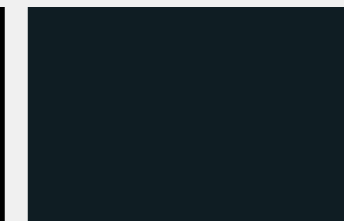
climatex®



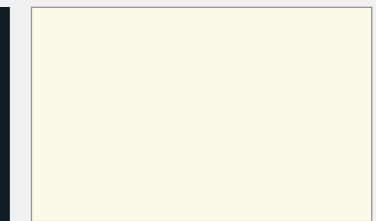
SW schwarz | black
noir | nero



GS graphit-schwarz | graphite
black | noir graphite | nero grafito



SG schwarz-grau | black grey
gris noir | grigio nerastro



PW perlweiss | pearl white
blanc perlé | bianco perla



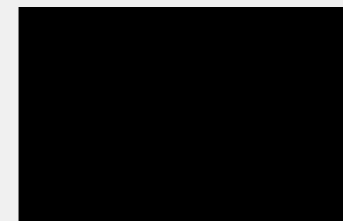
OR orange
orange
orange
arancia



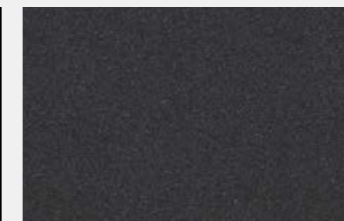
GN grasgrün
grass green
vert herbe
verde erba



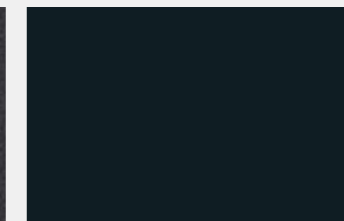
NA natur-weiss
blanc naturel
natural white
bianco naturale



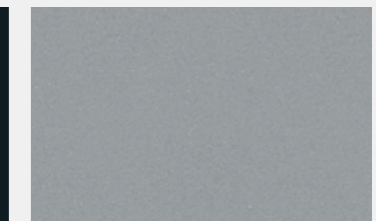
SW schwarz | black
noir | nero



AM anthrazit-metallic | anthracite
metallic | anthracite métallisé
antracite metallizzato



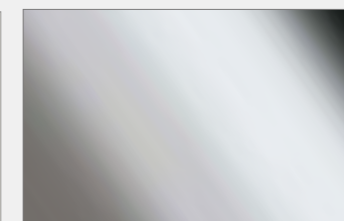
SG schwarzgrau | black grey
gris noir | grigio nerastro



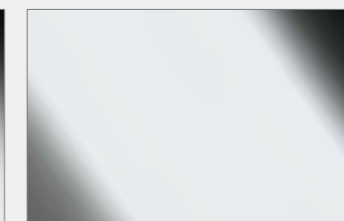
SI silber | silver
argent | argento



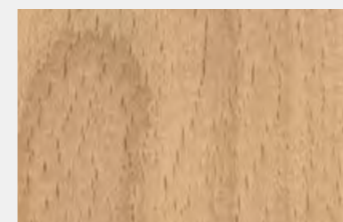
PW perlweiss | pearl white
blanc perlé | bianco perla



PO poliert | polished
poli | lucidato



CR verchromt | chrome-plated
chromé | cromato



BU100 Buche gedämpft
Steamed beech
Hêtre ombé
Faggio evaporato

| D | Alle Oberflächen und Bezüge nur lieferbar entsprechend den jeweils gültigen Preislisten!

| E | ALL Surfaces and covers are available only in accordance with the respectively valid price lists.

| F | Finitions et coloris livrables exclusivement en fonction des tarifs respectifs en vigueur!

| I | Tutte le finiture e rivestimenti disponibili solo conformemente ai listini prezzi rispettivamente validi!

EXTREME

 D 	
Material	100% Recyceltes Polyester, schwerentflammbar
Gewicht	435 g pro lfd. Meter
Breite	140 cm
Lichtechtheit	6 (ISO 105 - B02)
Reibechtheit	4 trocken/nass
Scheuerfestigkeit	100.000 Martindale
Feuersicherheit	EN 1021 - 1 (Zigarettentest), EN 1021 - 2 (Streichholztest) BS 7176 Low Hazard, BS 5852 Ignition Source 5, BS 7176 Medium Hazard, DIN 4102 B1, NF D 60-013, ÖNORM B 3825 & A 3800-1 (over 58 kg/m3 CMHR foam), UNI 9175 Classe 1 IM, BS 476 Part 7 Class 1

 E 	
Material	100% Recycled Polyester, flame retardant
Weight	435 g per lin. metre
Width	140 cm
Colour fastness	6 (ISO 105 - B02)
Rubbing fastness	4 dry/wet
Abrasion resistance	100,000 Martindale
Flammability	EN 1021 - 1 (cigarette), EN 1021 - 2 (match) BS 7176 Low Hazard, BS 5852 Ignition Source 5, BS 7176 Medium Hazard, DIN 4102 B1, NF D 60-013, ÖNORM B 3825 & A 3800-1 (over 58 kg/m3 CMHR foam), UNI 9175 Classe 1 IM, BS 476 Part 7 Class 1

MEDLEY™

 D 	
Material	100% Polyester
Peso	510 g pro lfd. Meter
Breite	140 cm
Lichtechtheit	5 – 7
Reibechtheit	4–5 trocken/nass
Scheuerfestigkeit	75.000 Martindale
Feuersicherheit	EN 1021 1&2

 E 	
Material	100% Polyester
Weight	510 g per lin. metre
Width	140 cm
Colour fastness	5 – 7
Rubbing fastness	4– 5 dry/wet
Abrasion resistance	75,000 Martindale
Flammability	EN 1021 1&2

SIENA

 D 	
Material	100% Polyester Trevira CS
Gewicht	365 g pro lfd. Meter
Breite	140 cm
Lichtechtheit	6–7 (max. 8)
Reibechtheit	4–5 trocken/nass
Scheuerfestigkeit	60.000 Martindale
Feuersicherheit	C1, B1, M1, CRIB 5, EN1021/1-2, IMO A 652 (16), BS 7176 Medium Hazard

 E 	
Material	100% Polyester Trevira CS
Weight	365 g per lin. metre
Width	140 cm
Colour fastness	6–7 (max. 8)
Rubbing fastness	4 – 5 dry/wet
Abrasion resistance	60,000 Martindale
Flammability	C1, B1, M1, CRIB 5, EN1021/1-2, IMO A 652 (16), BS 7176 Medium Hazard

Preisgruppe 1 | Price category 1 | Catégorie de prix 1 | Categoria di prezzo 1

 F 	
Matériau	100% Polyester Recyclé, FR
Poids	435 g au mètre courant
Largeur	140 cm
Résistance à la lumière	6 (ISO 105 - B02)
Résistance au frottement	4 sec/humide
Résistance à l’abrasion	100,000 Martindale
Inflammabilité	EN 1021 - 1 (cigarette), EN 1021 - 2 (allumette) BS 7176 Low Hazard, BS 5852 Ignition Source 5, BS 7176 Medium Hazard, DIN 4102 B1, NF D 60-013, ÖNORM B 3825 & A 3800-1 (over 58 kg/m3 CMHR foam), UNI 9175 Classe 1 IM, BS 476 Part 7 Class 1

 I 	
Materiale	100% Poliestere riciclato, ignifugo
Peso	435 g per metro corrente
Larghezza	140 cm
Solidità alla luce	6 (ISO 105 - B02)
Solidità all’abrasione	4 secco/umido
Resistenza allo sfregamento	100.000 Martindale
Sicurezza antincendio	EN 1021 - 1 (sigaretta), EN 1021 - 2 (fiammifero) BS 7176 Low Hazard, BS 5852 Ignition Source 5, BS 7176 Medium Hazard, DIN 4102 B1, NF D 60-013, ÖNORM B 3825 & A 3800-1 (over 58 kg/m3 CMHR foam), UNI 9175 Classe 1 IM, BS 476 Part 7 Class 1

Preisgruppe 1 | Price category 1 | Catégorie de prix 1 | Categoria di prezzo 1

 F 	
Matériau	100% Polyester
Poids	510 g au mètre courant
Largeur	140 cm
Résistance à la lumière	5 – 7
Résistance au frottement	4–5 sec/humide
Résistance à l’abrasion	75,000 Martindale
Inflammabilité	EN 1021 1&2

 I 	
Materiale	100% Poliestere
Peso	510 g per metro corrente
Larghezza	140 cm
Solidità alla luce	5 – 7
Solidità all’abrasione	4–5 secco/umido
Resistenza allo sfregamento	75.000 Martindale
Sicurezza antincendio	EN 1021 1&2

Preisgruppe 1 | Price category 1 | Catégorie de prix 1 | Categoria di prezzo 1

 F 	
Matériau	100% Polyester Trevira CS
Poids	365 g au mètre courant
Largeur	140 cm
Résistance à la lumière	6–7 (max. 8)
Résistance au frottement	4–5 sec/humide
Résistance à l’abrasion	60,000 Martindale
Inflammabilité	C1, B1, M1, CRIB 5, EN1021/1-2, IMO A 652 (16), BS 7176 Medium Hazard

 I 	
Materiale	100% Poliestere Trevira CS
Peso	365 g per metro corrente
Larghezza	140 cm
Solidità alla luce	6–7 (max. 8)
Solidità all’abrasione	4–5 secco/umido
Resistenza allo sfregamento	60.000 Martindale
Sicurezza antincendio	C1, B1, M1, CRIB 5, EN1021/1-2, IMO A 652 (16), BS 7176 Medium Hazard

FLEX

 D 	
Material	100% Polyester
Peso	680 g pro lfd. Meter
Breite	150 cm
Lichtechtheit	5 (max. 8)
Reibechtheit	4–5 trocken/nass
Scheuerfestigkeit	80.000 Martindale
Feuersicherheit	EN 1021 T 1&2

 E 	
Material	100% Polyester
Weight	680 g per lin. metre
Width	150 cm
Colour fastness	5 (max. 8)
Rubbing fastness	4– 5 dry/wet
Abrasion resistance	80,000 Martindale
Flammability	EN 1021 T 1&2

RUNNER™

 D 	
Material	100% Polyester
Peso	510 g pro lfd. Meter
Breite	160 cm
Lichtechtheit	5 – 7
Reibechtheit	4–5 trocken/nass
Scheuerfestigkeit	70.000 Martindale
Feuersicherheit	EN 1021 T 1&2

 E 	
Material	100% Polyester
Weight	510 g per lin. metre
Width	160 cm
Colour fastness	5 – 7
Rubbing fastness	4– 5 dry/wet
Abrasion resistance	70,000 Martindale
Flammability	EN 1021 T 1&2

FAME

 D 	
Material	95% Kammgarnwolle, 5% Polyamid
Gewicht	630 g pro lfd. Meter
Breite	140 cm
Lichtechtheit	5 (max. 8)
Reibechtheit	4–5 trocken/nass
Scheuerfestigkeit	200.000 Martindale
Feuersicherheit	EN 1021 P1&2, BS 5852 P2 CRIB 5, Calif. Bull 117. Sec E, DIN 4102 B2, NFP 92-503 M2, Önorm B 3825 B1, Önorm A 3800 P1. Q1

 E 	
Material	95% worsted wool, 5% Polyamid
Weight	630 g per lin. metre
Width	140 cm
Colour fastness	5 (max. 8)
Rubbing fastness	4–5 dry/wet
Abrasion resistance	200,000 Martindale
Flammability	EN 1021 P1&2, BS 5852 P2 CRIB 5, Calif. Bull 117. Sec E, DIN 4102 B2, NFP 92-503 M2, Önorm B 3825 B1, Önorm A 3800 P1. Q1

Preisgruppe 1 | Price category 1 | Catégorie de prix 1 | Categoria di prezzo 1

 F 	
Matériau	100% Polyester
Poids	680 g au mètre courant
Largeur	150 cm
Résistance à la lumière	5 (max. 8)
Résistance au frottement	4–5 sec/humide
Résistance à l’abrasion	80 000 Martindale
Inflammabilité	EN 1021 T 1&2

 I 	
Materiale	100% Poliestere
Peso	680 g per metro corrente.
Larghezza	150 cm
Solidità alla luce	5 (max. 8)
Resistenza all’abrasione	4–5 secco/umido
Resistenza allo sfregamento	80.000 Martindale
Sicurezza antincendio	EN 1021 T 1&2

Preisgruppe 2 | Price category 2 | Catégorie de prix 2 | Categoria di prezzo 2

 F 	
Matériau	100% Polyester
Poids	510 g au mètre courant
Largeur	160 cm
Résistance à la lumière	5 – 7
Résistance au frottement	4–5 sec/humide
Résistance à l’abrasion	70 000 Martindale
Inflammabilité	EN 1021 T 1&2

 I 	
Materiale	100% Poliestere
Peso	510 g per metro corrente
Larghezza	160 cm
Solidità alla luce	5 – 7
Solidità all’abrasione	4–5 secco/umido
Resistenza allo sfregamento	70.000 Martindale
Sicurezza antincendio	EN 1021 T 1&2

Preisgruppe 2 | Price category 2 | Catégorie de prix 2 | Categoria di prezzo 2

 F 	
Matériau	95% laine vierge peignée, 5% Polyamid
Poids	630 g au mètre courant
Largeur	140 cm
Résistance à la lumière	5 (max. 8)
Résistance au frottement	4–5 sec/humide
Résistance à l’abrasion	200 000 Martindale
Inflammabilité	EN 1021 P1&2, BS 5852 P2 CRIB 5, Calif. Bull 117. Sec E, DIN 4102 B2, NFP 92-503 M2, Önorm B 3825 B1, Önorm A 3800 P1. Q1

 I 	
Materiale	95% zuiver scheerwol kamgaren, 5% Polyamid
Peso	630 g per metro corrente
Larghezza	140 cm
Solidità alla luce	5 (max. 8)
Solidità all’abrasione	4–5 secco/umido
Resistenza allo sfregamento	200.000 Martindale
Sicurezza antincendio	EN 1021 P1&2, BS 5852 P2 CRIB 5, Calif. Bull 117. Sec E, DIN 4102 B2, NFP 92-503 M2, Önorm B 3825 B1, Önorm A 3800 P1. Q1

OMEGA Preisgruppe 2 | Price category 2 | Catégorie de prix 2 | Categoria di prezzo 2

 D 		 F 	
Material	100% Polyester	Matériau	100% polyester
Gewicht	500 g pro lfd. Meter	Poids	500 g par mètre courant
Breite	160 cm	Largeur	160 cm
Lichtechtheit	5 – 7	Résistance à la lumière	5 – 7
Reibechtheit	4–5 trocken/nass	Résistance au frottement	4–5 sec/humide
Scheuerfestigkeit	100.000 Martindale	Résistance à l'abrasion	100.000 Martindale
Feuersicherheit	EN 1021 1&2, BS 5852 0&1, CA TB 117-2013	Inflammabilité	EN 1021 1&2, BS 5852 0&1, CA TB 117-2013

 E 		 I 	
Material	100% polyester	Materiale	100% polyester
Weight	500 g per lin. metre	Peso	500 g per metro corrente
Width	160 cm	Larghezza	160 cm
Colour fastness	5 – 7	Solidità alla luce	5 – 7
Rubbing fastness	4– 5 dry/wet	Solidità all'abrasione	4–5 secco/umido
Abrasion resistance	100,000 Martindale	Resistenza allo sfregamento	100.000 Martindale
Flammability	EN 1021 1&2, BS 5852 0&1, CA TB 117-2013	Sicurezza antincendio	EN 1021 1&2, BS 5852 0&1, CA TB 117-2013

DECOVIN CONTRACT Preisgruppe 2 | Price category 2 | Catégorie de prix 2 | Categoria di prezzo 2

 D 		 F 	
Oberfläche	89% PVC-Compound	Surface	89% PVC-Compound
Träger	11 % PE/CO	Support	11 % PE/CO
Ausrüstung	Micro-perforation	Traitement	Micro-perforation
Gewicht	825 g/m³	Poids courant	825 g/m³
Breite	137 cm	Largeur	137 cm
Lichtechtheit	>4	Resistance à la lumiere	>4
Reibechtheit	5 trocken/nass	Resistance au frottement	5 sec/humide
Feuersicherheit	EN 1021 T 1 &2, DIN 53438/4102 B2, V.2 B1/Q1, NFP 503 M2	Inflammabilité	EN 1021 T 1 &2, DIN 53438/4102 B2, V.2 B1/Q1, NFP 503 M2

 E 		 I 	
Surface	89% PVC-Compound	Superficie	89% PVC-Compound
Support	11 % PE/CO	Supporto	11 % PE/CO
Treatment	Micro-perforation	Finish	Micro-perforation
Weight	825 g/m³	Peso	825 g/m³
Width	137 cm	Larghezza	137 cm
Colour fastness	>4	Solidità alla luce	>4
Rubbing fastness	5 dry/wet	Solidità all'abrasione	5 droog/nat
Flammability	EN 1021 T 1 &2, DIN 53438/4102 B2, V.2 B1/Q1, NFP 503 M2	Sicurezza antincendio	EN 1021 T 1 &2, DIN 53438/4102 B2, V.2 B1/Q1, NFP 503 M2

BREEZE FUSION™ Preisgruppe 3 | Price category 3 | Catégorie de prix 3 | Categoria di prezzo 3

 D 		Matériau	88% Laine, 12% Polyamide
Material	88% Wolle, 12% Polyamide	Poids	590 g au mètre courant
Peso	590 g pro lfd. Meter	Largeur	140 cm
Breite	140 cm	Résistance à la lumière	5 – 7
Lichtechtheit	5 – 7	Résistance au frottement	4–5 sec/humide
Reibechtheit	4–5 trocken/nass	Résistance à l'abrasion	100 000 Martindale
Scheuerfestigkeit	100.000 Martindale	Inflammabilité	EN 1021 T 1&2
Feuersicherheit	EN 1021 T 1&2		

 E 		 I 	
Material	88% Wool, 12% Polyamide	Materiale	88% Lana, 12% Polyamide
Weight	590 g per lin. metre	Peso	590 g per metro corrente
Width	140 cm	Larghezza	140 cm
Colour fastness	5 – 7	Solidità alla luce	5 – 7
Rubbing fastness	4– 5 dry/wet	Solidità all'abrasione	4–5 secco/umido
Abrasion resistance	100,000 Martindale	Resistenza allo sfregamento	100.000 Martindale
Flammability	EN 1021 T 1&2	Sicurezza antincendio	EN 1021 T 1&2

STRONG Preisgruppe 3 | Price category 3 | Catégorie de prix 3 | Categoria di prezzo 3

 D 		 F 	
Material	62% Gradura, 14% zertifizierte Farmwolle 10% Red. Lenzing FWM. 11% PES 3% MTF	Matériau	62% Gradura, 14% zertifizierte Farmwolle 10% Red. Lenzing FWM. 11% PES 3% MTF
Gewicht	448 g pro lfd. Meter	Poids	448 g par mètre courant
Breite	141 cm. Nutzbreite 139 cm	Largeur	141 cm. largeur utile 139 cm
Lichtechtheit	6 – 7	Résistance à la lumière	6 – 7
Reibechtheit	4-5 trocken/nass	Résistance au frottement	4-5 sec/humide
Scheuerfestigkeit	>500'000 Martinadle (ISO 12947-2)	Résistance à l'abrasion	>500'000 Martinadle (ISO 12947-2)
Feuersicherheit	EN 1021 part1+2, BS 5852 part 0+1 IMO Resolution MSG 307 (88); Annex 1, Part 8 California TB 117, Class	Inflammabilité	EN 1021 part1+2, BS 5852 part 0+1 IMO Resolution MSG 307 (88); Annex 1, Part 8 California TB 117, Class

 E 		 I 	
Material	62% Gradura, 14% certified wgm wool, 10% red. Lenzing FWM. 11% PES 3% MTF	Materiale	62% Gradura, 14% lana vergine certificato, 10% Red. Lenzing FWM. 11% PES 3% MTF
Weight	448 g per lin. metre	Peso	448 g per metro corrente
Width	141 cm. useable width 139 cm	Larghezza	141 cm, larghezza utile 139 cm
Colour fastness	6 – 7	Solidità alla luce	6 – 7
Rubbing fastness	4-5 dry/wet	Solidità all'abrasione	4–5 secco/umido
Abrasion resistance	>500'000 Martinadle (ISO 12947-2)	Resistenza allo sfregamento	>500'000 Martinadle (ISO 12947-2)
Flammability	EN 1021 part1+2, BS 5852 part 0+1 IMO Resolution MSG 307 (88); Annex 1, Part 8 California TB 117, Class	Sicurezza antincendio	EN 1021 part1+2, BS 5852 part 0+1 IMO Resolution MSG 307 (88); Annex 1, Part 8 California TB 117, Class

COMFORT Preisgruppe 4 | Price category 4 | Catégorie de prix 4 | Categoria di prezzo 4

 D 		 F 	
Material	88% Polyester, 12% Polyurethan	Matériau	88% Polyester, 12% Polyurethan
Gewicht	385 g pro lfd. Meter	Poids	385 g au mètre courant
Breite	140 cm	Largeur	140 cm
Lichtechtheit	5 (max. 8)	Résistance à la lumière	5 (max. 8)
Reibechtheit	4-5 trocken/nass	Résistance au frottement	4-5 sec/humide
Scheuerfestigkeit	100.000 Martindale	Résistance à l'abrasion	100 000 Martindale
Feuersicherheit	EN 1021-1, EN 1021 T 1&2, DIN 4102 B1/B2, BS 5852	Inflammabilité	EN 1021-1, EN 1021 T 1&2, DIN 4102 B1/B2, BS 5852

 E 		 I 	
Material	88% Polyester, 12% Polyurethane	Materiale	88% Polyester, 12% Polyurethan
Weight	385 g per lin. metre	Peso	385 g per metro corrente
Width	140 cm	Larghezza	140 cm
Colour fastness	5 (max. 8)	Solidità alla luce	5 (max. 8)
Rubbing fastness	4-5 dry/wet	Solidità all'abrasione	4-5 secco/umido
Abrasion resistance	100,000 Martindale	Resistenza allo sfregamento	100.000 Martindale
Flammability	EN 1021-1, EN 1021 T 1&2, DIN 4102 B1/B2, BS 5852	Sicurezza antincendio	EN 1021-1, EN 1021 T 1&2, DIN 4102 B1/B2, BS 5852

SELECT Preisgruppe Leder | Price category leather | Catégorie de prix cuir | Categoria di prezzo Pelle

 D 		 F 	
Material	Feinnarbiges Nappaleder	Matériau	Cuir nappa grain fin et élégant
Lichtechtheit	5	Résistance à la lumière	5
Reibechtheit	4 trocken/nass	Résistance au frottement	4 sec/humide

 E 		 I 	
Material	Nappa leather biancoh smooth grain structure	Materiale	Nappa a grana fine
Colour fastness	5	Solidità alla luce	5
Rubbing fastness	4 dry/wet	Resistenza allo sfregamento	4 secco/umido

STRICKGEWEBE

Preisgruppe SW | Price category SW | Catégorie de prix SW | Categoria di prezzo SW

 D 	
Material	100% Polyester
Gewicht	ca. 700 g/m ²
Lichtechtheit	6+ (max. 8)
Reibechtheit	4+ trocken/nass
Scheuerfestigkeit	100.000 Martindale

 F 	
Matériau	100% Polyester
Poids	env. 700 g/m ² courant
Résistance à la lumière	6+ (max. 8)
Résistance au frottement	4+ sec/humide
Résistance à l'abrasion	100.000 Martindale

 E 	
Material	100% Polyester
Weight	approx. 700 g/m ²
Colour fastness	6+ (max. 8)
Rubbing fastness	4+ dry/wet
Abrasion resistance	100.000 Martindale

 I 	
Materiale	100% Poliistere
Peso	ca. 700 g/m ²
Solidità alla luce	6+ (max. 8)
Solidità all'abrasione	4+ secco/umido
Resistenza allo sfregamento	100.000 Martindale

CLASSIC leitfähig | conductive | conductible

Preisgruppe 1 | Price category 1 | Catégorie de prix 1 | Categoria di prezzo 1

 D 	
Material	100% Polyacryl
Peso	560 g pro lfd. Meter
Breite	140 cm
Lichtechtheit	6–7 (max. 8)
Reibechtheit	4-5 trocken/nass
Scheuerfestigkeit	40.000 Martindale

 F 	
Matériau	100% Polyacryl
Poids	560 g au mètre courant
Largeur	140 cm
Résistance à la lumière	6–7 (max. 8)
Résistance au frottement	4-5 sec/humide
Résistance à l'abrasion	40 000 Martindale

 E 	
Material	100% Polyacryl
Weight	560 g per lin. metre
Width	140 cm
Colour fastness	6–7 (max. 8)
Rubbing fastness	4-5 dry/wet
Abrasion resistance	40,000 Martindale

 I 	
Materiale	100% Polyacryl
Peso	560 g per metro corrente
Larghezza	140 cm
Solidità alla luce	6–7 (max. 8)
Solidità all'abrasione	4-5 secco/umido
Resistenza allo sfregamento	40.000 Martindale

STRONG leitfähig | conductive | conductible

Preisgruppe 3 | Price category 3 | Catégorie de prix 3 | Categoria di prezzo 3

 D 	
Material	62% Gradura, 14% zertifizierte Farmwolle 10% Red. Lenzing FWM. 11% PES 3% MTF
Gewicht	448 g pro lfd. Meter
Breite	141 cm. Nutzbreite 139 cm
Lichtechtheit	6 – 7
Reibechtheit	4-5 trocken/nass
Scheuerfestigkeit	>500'000 Martinadle (ISO 12947-2)
Feuersicherheit	EN 1021 part 1+2, BS 5852 part 0+1 IMO Resolution MSG 307 (88); Annex 1, Part 8 California TB 117, Class

 F 	
Matériau	62% Gradura, 14% zertifizierte Farmwolle 10% Red. Lenzing FWM. 11% PES 3% MTF
Poids	448 g par mètre courant
Largeur	141 cm. largeur utile 139 cm
Résistance à la lumière	6 – 7
Résistance au frottement	4-5 sec/humide
Résistance à l'abrasion	>500'000 Martinadle (ISO 12947-2)
Inflammabilité	EN 1021 part 1+2, BS 5852 part 0+1 IMO Resolution MSG 307 (88); Annex 1, Part 8 California TB 117, Class

 E 	
Material	62% Gradura, 14% certified wgm wool, 10% red. Lenzing FWM. 11% PES 3% MTF
Weight	448 g per lin. metre
Width	141 cm. useable width 139 cm
Colour fastness	6 – 7
Rubbing fastness	4-5 dry/wet
Abrasion resistance	>500'000 Martinadle (ISO 12947-2)
Flammability	EN 1021 part 1+2, BS 5852 part 0+1 IMO Resolution MSG 307 (88); Annex 1, Part 8 California TB 117, Class

 I 	
Materiale	62% Gradura, 14% lana vergine certificato, 10% Red. Lenzing FWM. 11% PES 3% MTF
Peso	448 g per metro corrente
Larghezza	141 cm, larghezza utile 139 cm
Solidità alla luce	6 – 7
Solidità all'abrasione	4–5 secco/umido
Resistenza allo sfregamento	>500'000 Martinadle (ISO 12947-2)
Sicurezza antincendio	EN 1021 part 1+2, BS 5852 part 0+1 IMO Resolution MSG 307 (88); Annex 1, Part 8 California TB 117, Class

MEDISTAT KUNSTLEDER leitfähig | conductive | conductible

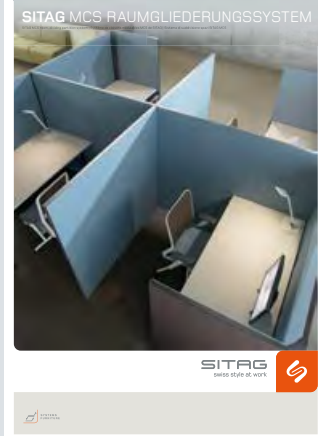
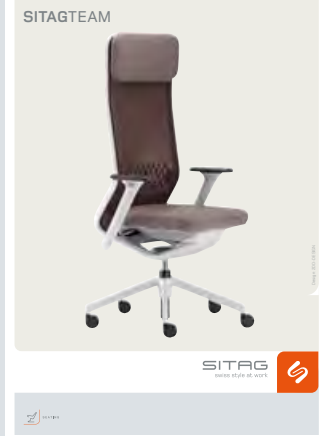
Preisgruppe 3 | Price category 3 | Catégorie de prix 3 | Categoria di prezzo 3

 D 	
Oberfläche	84,5% PVC
Träger	15 % PE
Gewicht	580 g/m ²
Breite	140 cm
Lichtechtheit	>6
Reibechtheit	4 – 5 trocken, 4 – 5 nass
Scheuerfestigkeit	NFG 35105, > 1000
Feuersicherheit	EN 1021.1 Schedule 4 Part 1 / 5 Part 1

 F 	
Surface	84,5% PVC
Support	15 % PE
Poids courant	580 g/m ²
Largeur	140 cm
Resistance à la lumiere	>6
Resistance au frottement	4 – 5 sec / 4 – 5 humide
Résistance à l'abrasion	NFG 35105, > 1000
Inflammabilité	EN 1021.1 Schedule 4 Part 1 / 5 Part 1

 E 	
Surface	84,5% PVC
Support	15 % PE
Weight	580 g/m ²
Width	140 cm
Colour fastness	>6
Rubbing fastness	4 – 5 dry, 4 – 5 wet
Abrasion resistance	NFG 35105, > 1000
Flammability	EN 1021.1 Schedule 4 Part 1 / 5 Part 1

 I 	
Superficie	84,5% PVC
Supporto	15 % PE
Peso	580 g/m ²
Larghezza	140 cm
Solidità alla luce	>6
Solidità all'abrasione	4 – 5 secco / 4 – 5 umido
Resistenza allo sfregamento	NFG 35105, > 1000
Sicurezza antincendio	EN 1021.1 Schedule 4 Part 1 / 5 Part 1



| D | Technische Änderungen, Druckfehler und Programmänderungen vorbehalten. Farbabweichungen von den Originalfarben sind drucktechnisch bedingt.
| E | Subject to technical and programme alterations, printing errors, and other errors. Printed colours may vary from actual colours.
| F | Sous réserve de modifications techniques, d'erreurs d'impression et d'altérations du programme. Les couleurs reproduites peuvent différer des couleurs originales.
| I | Con riserva di modifiche tecniche, errori di stampa e cambiamenti di programma. Eventuali differenze di colore tra le immagini e i prodotti reali sono dovute alla stampa.

SITAG – ein Unternehmen der Nowy Styl Group
 SITAG – a Company of the Nowy Styl Group
 SITAG - une entreprise de Nowy Styl Group
 SITAG – una società del Nowy Styl Group



www.nowystylgroup.com



SITAG Partners

Austria

SITAG Buromobel Ges.m.b.H.
 Bahnhofstr. 24
 6850 Dornbirn
 T +43 55 72 290 26
 F +43 55 72 290 26 15
 info@sitag.at
 www.sitag.at

Nowy Styl Group
 Wolfsbach Nr. 48
 A-4101 Feldkirchen / Donau
 M +43 (0)664 11 28 503
 austria@nowystylgroup.com

Belgium & Luxembourg

Buro & Design Center
 Esplanade 1 PB 44
 1020 Brussels, Belgium
 belux@nowystylgroup.com

Czech Republic

Nowy Styl Group
 Prague office Park 1
 K Háji 2 / 1233
 155 00 Praha 5
 T +420 296 357 190
 praha@nowystylgroup.com

SITAG SA Nyon

Chemin du Joran 10
 CH-1260 Nyon
 T.+41 (0) 22 361 47 27
 F +41 (0) 22 361 49 92
 info.nyon@sitag.ch

SITAG AG

Bramenstrasse 8
 CH-8184 Bachenbülach
 T +41 (0) 44 863 72 72
 F +41 (0) 44 863 72 70
 info.zuerich@sitag.ch

France

Nowy Styl Group
 Showroom
 32, boulevard Haussmann
 75009 Paris
 T +33 (0)1 43 57 71 61

Siège social
 10, rue La Fontaine
 38160 Saint Marcellin
 T +33 (0)4 76 38 41 02
 contact@nowystylgroup.fr

Germany

SITAG AG
 Vertriebsbüro Deutschland
 Ringstrasse 94
 32427 Minden
 T +49 571 388 609 30
 F +49 571 388 609 29
 info@sitag.de
 www.sitag.de

Nowy Styl GmbH
 Neumannstrasse 8
 40235 Düsseldorf
 T +49 211 583777-0
 info@nowystylgroup.de

Nowy Styl GmbH
 Jubatus-Allee 1
 92263 Ebermannsdorf
 T +49 9438 949-0
 info@nowystylgroup.de

Nowy Styl GmbH
 Voigtei 84
 31595 Steyerberg
 T +49 5769/7-0
 info@nowystylgroup.de

Hungary

Telmex - Nowy Styl Zrt.
 Szentendre, Rózsa u. 23
 2000 Hungary
 T +36 26 503 100
 M +36 20 326 0058
 telmex@telmex.hu

Poland

SITAG Formy Siedzenia
 Sp.z.o.o.
 Łowecin, ul. Sarbinowska 11
 62-020 Swarzedz
 T +48 61 817 33 63
 F +48 61 651 52 89
 sitag@sitag.pl
 www.sitag.pl

Export Department
 Nowy Styl Group
 Ul. Fabryczna 8
 38-200 Jasło, Poland
 T +48 13 437 6250
 E: info@nowystylgroup.com

The Netherlands

Nowy Styl Group
 Basicweg 22
 3821 BR Amersfoort
 T +31 (0) 33 453 50 90
 F +31 (0) 33 453 50 99
 ned@nowystylgroup.com

Slovakia

Nowy Styl Group
 Tovarenska 10
 831 01 Bratislava
 T +421 948 006 270
 slovakia@nowystylgroup.com

United Kingdom

Nowy Styl Group
 Unit 112
 27-31 Clerkenwell Workshops
 UK-Farringdon, London, EC1R OAT
 T +44 20 3176 5230
 info@nowystylgroup.co.uk

United Emirates

Nowy Styl Group
 P.O. BOX 191289
 United Arab Emirates, Dubai
 T +971 507 596 159
 middle.east@nowystylgroup.com

swiss workstyle

SITAG AG

Simon Frick-Str. 3
 CH-9466 Sennwald

T +41 (0) 81 758 18 18
 F +41 (0) 81 758 18 00
 info@sitag.ch
 www.sitag.ch

SITAG
 swiss style at work

