



LINOLEUM BY SITAG

In furniture design, the selection of optimal materials is a key factor for the value and the success of the product. Furniture Linoleum from SITAG, with its Desk Top® brands, is a genuine alternative to other surface materials. Furniture Linoleum is a light, elastic material with a warm and pleasing surface feel. The matte surface of the protective layer brightens the lustre of the colours and prevents any disturbing reflection.

Furniture Linoleum consists of renewable raw materials. The individual constituents are linseed oil, resin, sawdust, fine pulverized limestone, and nature-identical pigments. The material is biologically degradable and is ecologically unobjectionable over the long life of the products. As long as the sun shines and rain falls, nature supplies us with all the raw materials that we need for Furniture Linoleum.



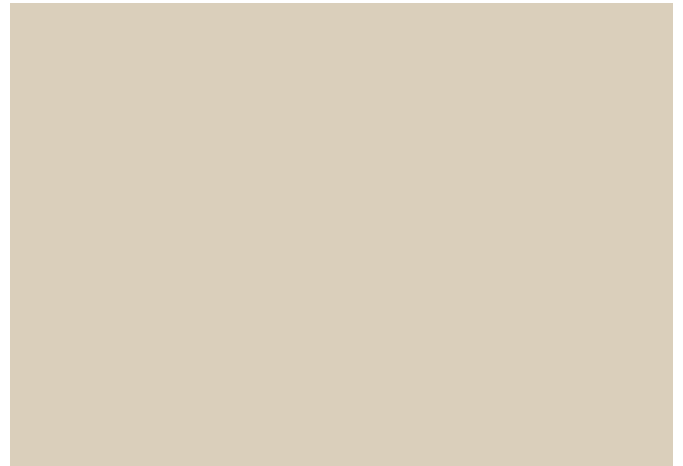


SITAG STANDARD COLLECTION

Price class 1



4164 salsa



4176 mushroom



4023 nero

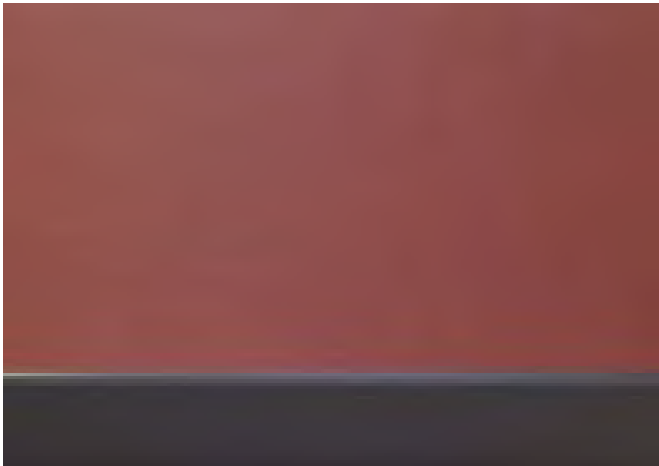


4132 ash

The remaining collection is available in price class HOLZ 2 for orders up to 30 running metres. For quantities with more than 30 running metres, orders can be made with price class HOLZ 1.



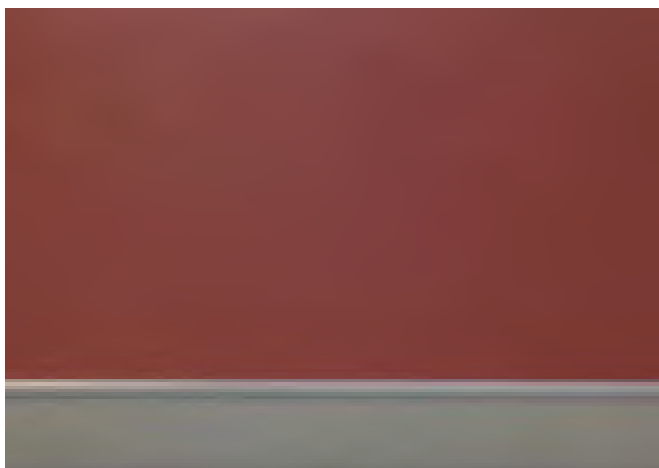
EDGE COLOURS



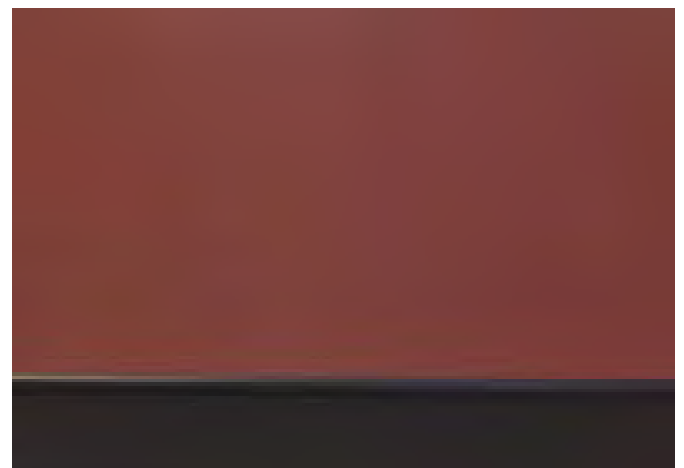
K231 anthracite



K310 white



K508 silver



K100 black



PROPERTIES

- Unique surface feel
- Natural material
- Environmentally friendly
- Not sensitive to fingerprints, thanks to the matte surface
- Anti-static
- Light-fast (ISO 105 B02, Method 3: blue scale at least Stage 6)
- No reflection surface

TREATMENT AGENT

You can order a special agent for cleaning and treating at sales@sitag.ch

