

MATERIALIEN & FARBEN BÜROMÖBEL

MATERIALS AND COLOURS FOR OFFICE FURNITURE | MATÉRIAUX & COULEURS MOBILIER DE BUREAU | MATERIALI E COLORI PER MOBILIO DA UFFICIO

SITAG
by Nowy Styl



SYSTEMS
FURNITURE



EXCLUSIVE
FURNITURE

CUSTOMIZED SOLUTIONS

FARBEN COLOR COULEURS COLORI

Farbe ist Information und Emotion, schafft Atmosphäre, dient der Orientierung und Identifikation. Sie regt die Sinne an, fördert Kreativität und gestaltet Stimmungen.

Auf den folgenden Seiten wollen wir Ihnen nicht nur einen Überblick über unsere Materialien und Farben für unsere Büromöbel geben, sondern haben auch „Moodboards“ zusammengestellt, die Ihnen Anregungen für die komplette Gestaltung des Ambientes vermitteln. Sie sollen nicht nur Hinweise geben, welche Farben und Oberflächen sich besonders gut kombinieren lassen, sondern auch als Inspiration für die weitere Ausgestaltung eines Raumes durch Textilien, Bodenbeläge, Lampen, Kunst und Accessoires dienen.

| E | COLOR IS INFORMATION AND EMOTION, CREATES ATMOSPHERE, SERVES AS ORIENTATION AND IDENTIFICATION. IT STIMULATES THE SENSES, PROMOTES CREATIVITY AND CREATES MOODS.

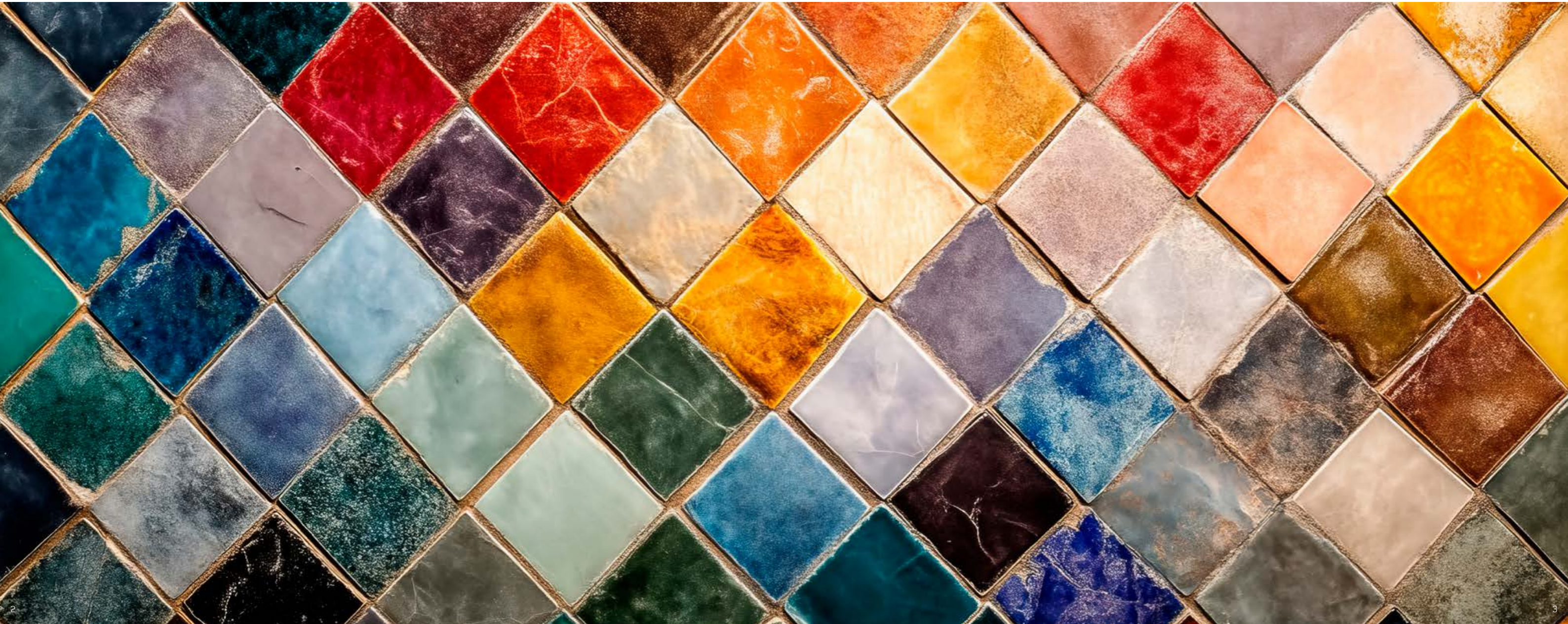
On the following pages we'll not only provide you with an overview of our materials and colours for office furniture. We've also created „mood-boards“ for you to give new ideas for the complete design of your ambience. These pages will not only give you information about which colours and surface can be especially effectively combined: they will also serve as inspiration for further creation of room ambience with textiles, flooring, lighting, art, and accessories.

| F | LA COULEUR EST UNE INFORMATION ET UNE ÉMOTION, ELLE CRÉE UNE ATMOSPHÈRE, SERT À L'ORIENTATION ET À L'IDENTIFICATION. ELLE STIMULE LES SENS, FAVORISE LA CRÉATIVITÉ ET CRÉE DES AMBIANCES.

Les pages suivantes vous proposent non seulement un petit tour d'horizon sur les matériaux et coloris dédiés à notre mobilier de bureau, mais encore un « Mood board » utile à la configuration intégrale de l'ambiance et du style de votre projet. Ces derniers vous renseigneront d'une part sur la composition idéale des coloris et des finitions, et d'autre part, ils seront source d'inspiration en vue de l'arrangement ultérieur de votre espace par des solutions textiles, des revêtements de sol, des luminaires, des accessoires et par des solutions artistiques.

| I | IL COLORE È INFORMAZIONE ED EMOZIONE, CREA ATMOSFERA, SERVE ALL'ORIENTAMENTO E ALL'IDENTIFICAZIONE. STIMOLA I SENSI, PROMUOVE LA CREATIVITÀ E CREA STATI D'ANIMO

Nelle pagine che seguono troverete una panoramica sui materiali e colori per i nostri mobili da ufficio ma anche una serie di "moodboard" che sapranno darvi degli interessanti stimoli e suggerimenti su come gestire sul piano formale l'ambiente nel suo complesso, non solo indicandovi i giusti abbinamenti di colori e superfici ma anche facendovi da ispirazione per l'ulteriore realizzazione degli spazi con materiali tessili, rivestimenti di pavimenti, lampade, oggetti d'arte e accessori.



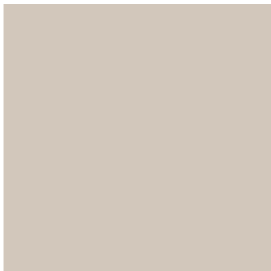
SMART LUXURY

AUSGEWÄHLT EDLE MATERIALIEN erzeugen eine zeitlos klassische Stimmung. Der Mix aus kräftigen Holztönen und Akzenten von glänzendem Chrom strahlt Klasse und Eleganz aus.

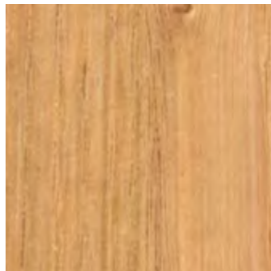
| E | SELECTED PREMIUM MATERIALS create a timeless, classical mood. The mix of intensive wood shades and accents from brilliant chrome radiate class and elegance.

| F | LES MATÉRIAUX SÉLECTIONNÉS créent une atmosphère intemporelle classique. Le panachage entre les teintes boisées vives et les touches de chrome brillant rayonne la classe et l'élégance.

| I | MATERIALI PREGIATI E SELEZIONATI creano un'atmosfera classicamente senza tempo. Un mix di forti tonalità di legno e accenti di cromo lucente suggerisce classe ed eleganza.



K702 (NK/HC) kaschmirgrau | cashmere grey | gris kashmir | grigio cashmere



NU00 Nussbaum matt | nutwood matt | noyer mat | noce opaco



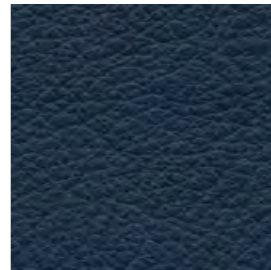
ST24 rot-braun | red-brown | rouge brun | Rosso-marrone (NCS-6020- R10B)



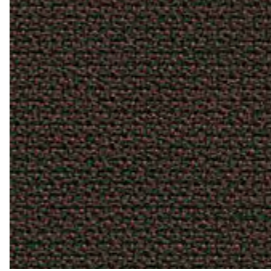
4860 leuchtrot | vivid red | rouge lumineux | rosso luminoso



4132 ash | ash | cendre | ash



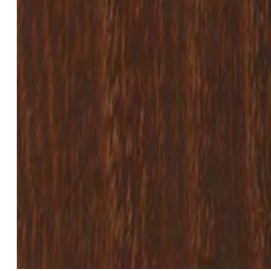
LS350 (LS82) marine | navy blue | bleu marine | marineblu



TM30 braun-schwarz | brownish black | noir brun | nero brunastro



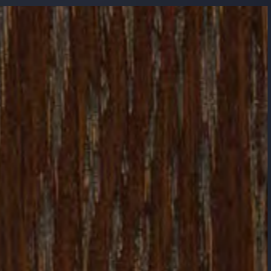
TM37 oliv | olive | olive | oliva



AKG200 Akazie geräuchert hochglanz | smoked acacia high gloss | acacia fumé brillant | acacia affumicato lucida



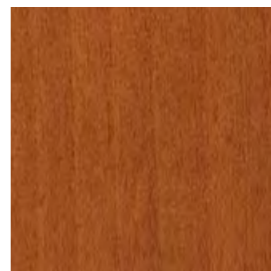
K4315 Organza | organza | organza | organza



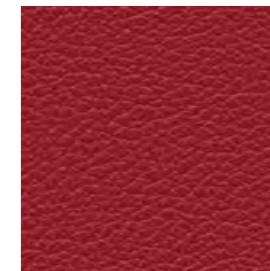
EIW10 (VM) Eiche nach Wenge | wenge-stained oak | chêne wenge | rovere in look wengé



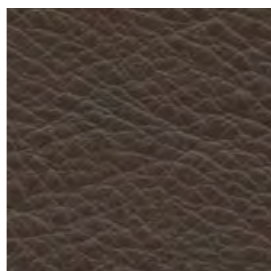
CR verchromt | chrome finish | chromé | cromato



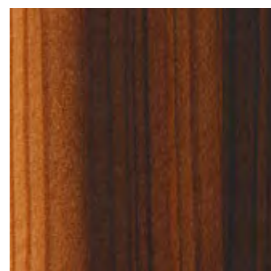
K100 Kirschbaum matt | cherry matte | cerisier mat | ciliegio opaco



LS339 weinrot | wine red | rouge vin | rosso vino



LS306 (LS30) mokka | mocha | moka | mocha



LAG10 Lärche geräuchert | smoked larch | mélèze fumé | larice affumicato

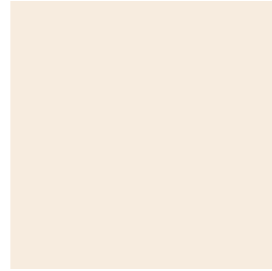
NATURAL MOOD

HIER STEHEN NATUR- UND ERDTÖNE sowie helle Echtholzfuerniere im Vordergrund. Dadurch entsteht ein natürliches, freundliches, harmonisches Farbenspiel. Das samtige Rotbraun hingegen gibt der Komposition Tiefe, Gelassenheit und Bodenhaftung.

| E | NATURAL AND EARTH SHADES as well as bright genuine-wood veneers are in focus here. This produces a natural, friendly, harmonic play of colours. Velvety red-brown, on the other hand, endows the composition with depth, serenity, and sure footing.

| F | SONT MIS EN AVANT ICI les teintes nature et terre ainsi que les placages bois véritables. Il en découle un jeu de couleurs naturel, chaleureux et harmonieux. En revanche, la couleur rouge brun douce et soyeuse apporte profondeur, sérénité et pondération.

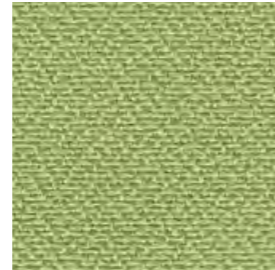
| I | AD ESSER IN PRIMO piano sono qui tonalità naturali e di terra come anche impiallacciate chiare in legno naturale che danno luogo ad un gioco di colori naturale e piacevolmente armonico. Il rosso-marrone vellutato, invece, dona alla composizione profondità, serenità e aderenza.



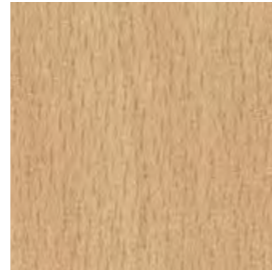
K216 (AA) vanille | vanilla | vanille | vaniglia



LS310 kaschmir | cashmere | cachemire | cashmere



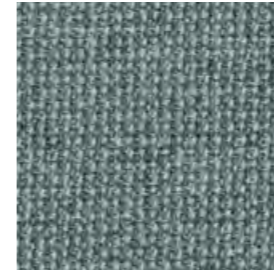
4834 hellgrün | bright green | vert clair | verde chiaro



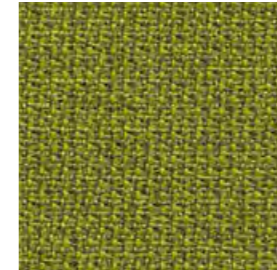
KBD (MM/HF) Buche Dekor | maple decor | décor hêtre | faggio decorativo



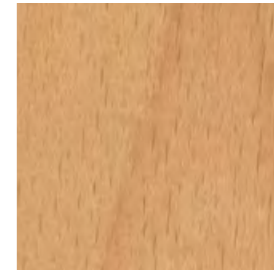
K645 agavengrün | agave green | vert agave | verde agave



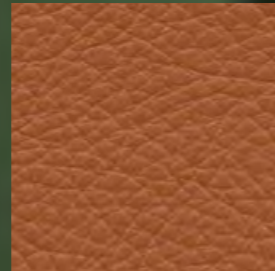
TM39 mint | mint | menthe | menta



TM35 grün | green | vert | verde



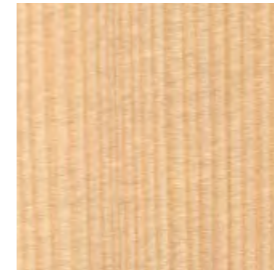
BU10 (VT) Buche natur | natural beech | hêtre naturel | faggio al naturale



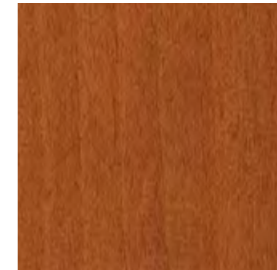
LS307 (LS50) cognac | cognac | cognac | cognac



KAD Ahorn Dekor | maple decor | décor érable | acero decorativo



WT10 Weisstanne | silver fir | sapin argenté | abete bianco



K110 Kirschbaum | cherry | cerisier | ciliegio



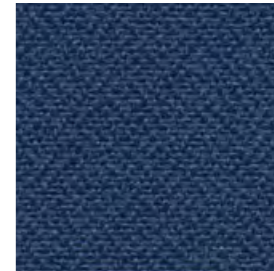
ST29 trüffelbraun | truffle brown | brun truffe | marrone tartufo (NCS-S5005-Y50R)



ST28 agavengrün | agave green | vert agave | verde agave (NCS-S6010-G50Y)



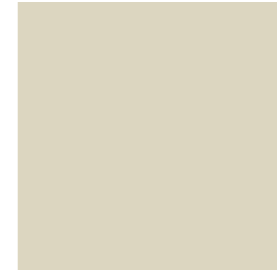
TM09 sand | sandy | sable | sabbia



4883 dunkelblau | dark blue | bleu foncé | blu scuro



ST24 rot-braun | red-brown | rouge brun | rosso-marrone (NCS-6020-R10B)



ST90 hell-beige | light beige | beige clair | beige chiaro (NCS-0505-Y10R)

RETRO REVIVAL

EINE JUNG, DYNAMISCH UND TRENDORIENTIERTE FARBFAMILIE. Wir befinden uns in gedämpften Pastellen, die ein wenig durchscheinend wirken. Ein sattes Rot und nicht alltägliche Holzstrukturen setzen zudem wirkungsvolle Akzente innerhalb dieser Farbgruppe. Metallisierende Oberflächen bilden ausdrucksstarke Kontraste.

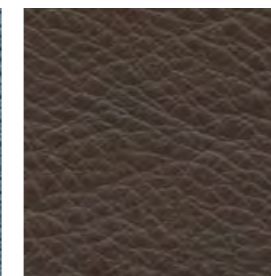
| E | A YOUNG, DYNAMIC, AND TREND-ORIENTED FAMILY OF COLOURS. Here we're in a world of muted pastels that have a certain translucent sheen. Rich and deep reds and not-everyday wooden structures additionally set effective accents within this colour group. Metallized surfaces form highly expressive contrasts.

| F | UN NUANCIER JEUNE, DYNAMIQUE ET TRÈS TENDANCE. Nous voici dans les tons pastels ombrés légèrement translucides. Un rouge soutenu et des structures boisées hors du commun mettent l'accent au sein de cette palette de couleurs. Les finitions métallisées forment des contrastes expressifs.

| I | UNA FAMIGLIA DI COLORI GIOVANE, DINAMICA E TRENDY. Qui abbiamo a che fare con pacati colori pastello ad effetto leggermente trasparente. Un rosso intenso e strutture del legno non comuni distribuiscono inoltre accenti di grande efficacia in questo gruppo di colori. Superfici metallizzate garantiscono infine contrasti molto espressivi.



TM80 blau | blue | bleu | blu



LS306 (LS30) mokka | mocha | moka | mocca



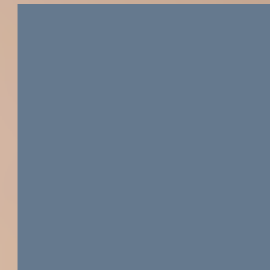
ST15 kaschmirgrau | cashmere grey | gris kashmir | grigio cashmere (NCS-S3005-Y50R)



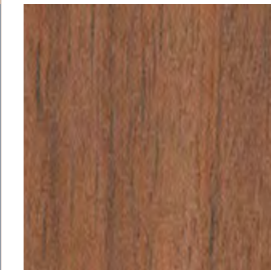
LS339 weinrot | wine red | rouge vin | rosso vino



ST24 rot-braun | red-brown | rouge brun | Rosso-marrone (NCS-6020-R10B)



K507 (ST) rauchblau | smoky blue | bleu fumé | blu fumoso



KNU00 (NW) Nussbaum Dekor | nutwood decor | décor noyer | noce decorativo



LS325 (LS09) sand | sandy | sable | sabbia



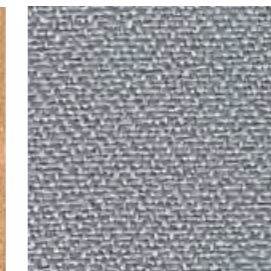
K4312 beige | beige | beige | beige



4809 sand | sandy | sable | sabbia



KERD (HO/KU) Eiche rustikal Dekor | oak rustic decor | décor chêne rustique | decoro rovere rustico



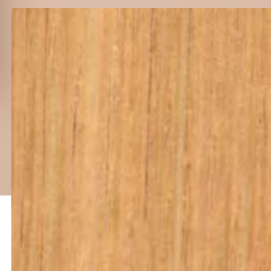
4871 grau | grey | gris | grigio



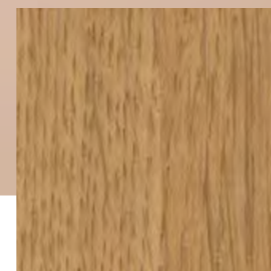
4834 hellgrün | bright green | vert clair | verde chiaro



4132 ash | ash | cendre | ash



NU10 (VS) Nussbaum | nutwood | noyer | noce



EI10 (DM) Eiche natur | natural oak | chêne naturel | rovere naturale

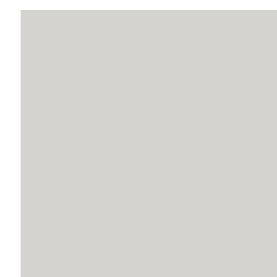


KED (ML/HE) Eiche Dekor | oak decor | décor chêne | decoro rovere

THE NEUTRALS



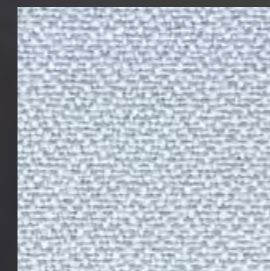
K231 anthrazit | anthracite | anthracite | antracite



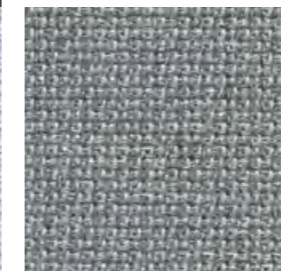
K708 (MP/BW) mittelgrau | medium grey | gris moyen | grigio medio



TM30 braun-schwarz | brownish black | noir brun | nero brunastro



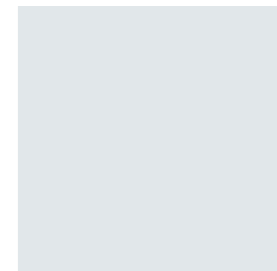
4869 blaugrau | blue-grey | gris bleu | grigio blu



TM75 grau | grey | gris | grigio



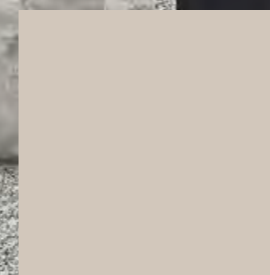
K4317 (KJ) schwarz | black | noir | nero



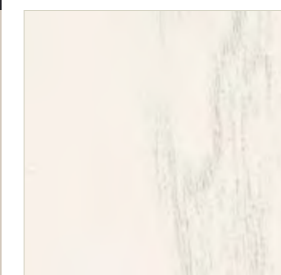
K245 weissgrau | pale grey | gris blanc | bianco grigio



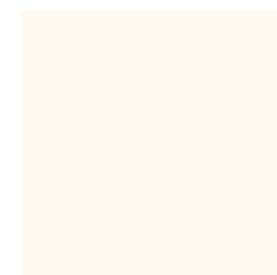
4132 ash | ash | cendre | ash



K702 (NK/HC) kaschmirgrau | cashmere grey | gris kashmir | grigio cashmere



ES16 (VN) Esche weiss | white ash | frêne blanc | frassino bianco



K4318 (KS) weiss | white | blanc | bianco



ES03 Esche schwarz matt | black ash matt | frêne noir mat | frassino nero opaco



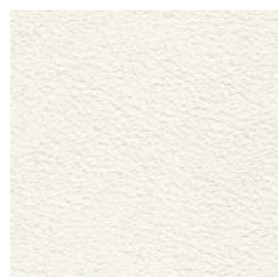
LS301 (LS85) schwarz | black | noir | nero

WARMES HOLZ UND KÜHLER STEIN, silbernes Metall und dunkles Holz sind Merkmale dieser Gruppe. Mit ihr lassen sich kühle Eleganz genauso verwirklichen wie avantgardistische Kontraste oder neutrale Zurückhaltung.

| E | HOT SAND AND COLD STONE, silvery metal, and dark wood are the hallmarks of this group. It allows cool elegance, as well as avant-garde contrasts or neutral reserve.

| F | LE SABLE CHAUD ET LA PIERRE FROIDE, le métal argent et le bois foncé sont les traits caractéristiques de cette palette. Elle matérialise tantôt une élégance réservée, tantôt des contrastes avant-gardistes ou encore de la modération neutre.

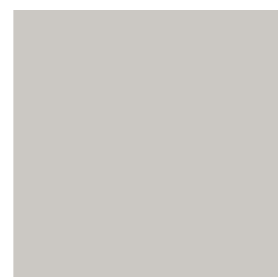
| I | CALDA SABBIA E FREDDA PIETRA, metallo argenteo e legno scuro sono le caratteristiche di questo gruppo con il quale è possibile suggerire sia distaccata eleganza che contrasti avanguardisti o neutrale discrezione.



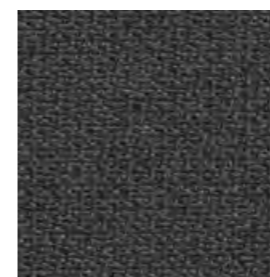
LS390 (LS02) weiss | white | blanc | bianco



ST10 weissgrau | white-grey | blanc gris | bianco grigio (NCS-1502-B)



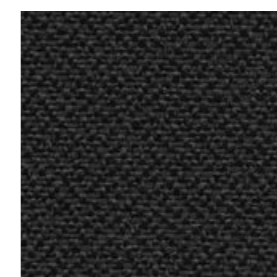
K4319 hellgrau | light grey | gris clair | grigio chiaro



TM77 anthrazit | anthracite | anthracite | antracite



LS358 steingrau | stone grey | gris pierre | grigio pietra



4885 schwarz | black | noir | nero

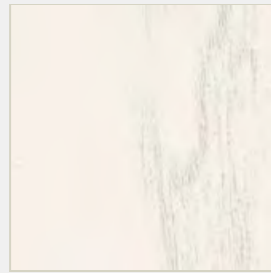


4023 (JC) nero | black | noir | nero

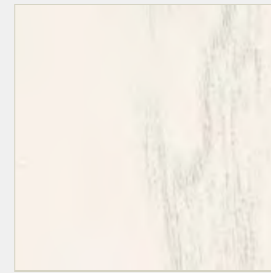
HOLZ 1

Wood 1 | Bois 1 | Legno 1

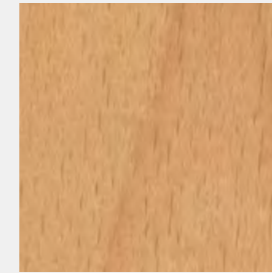
- ✓ SITAG SCHRANKPROGRAMM
- ✓ SITAG MCS SCHRANKSYSTEM
- ✓ SITAG ORGATOWER
- ✓ SITAGPORT
- ✓ SITAGACTIVE
- ✓ SITAGACTIVE LIFTMATIC 2.1 2.0
- ✓ SITAGGO 2.0
- ✓ SITAG MCS TISCHSYSTEM
- ✓ SITAG MCS RAUMGLIEDERUNGSSYSTEM
- ✓ SITAGMOVE
- ✓ SITAGASCENT
- ✓ SITAGINLINE



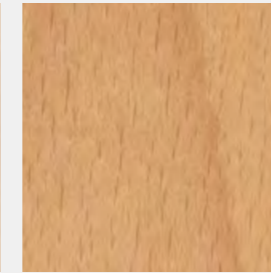
ES16 (VN) Esche weiss | white ash | frêne blanc | frassino bianco



ES06 Esche weiss matt | white ash matt | frêne blanc mat | frassino bianco opaco



BU10 (VT) Buche natur | natural beech | hêtre naturel | faggio al naturale



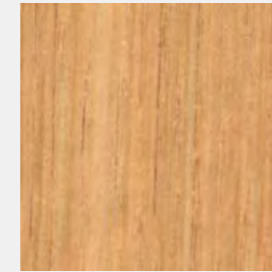
BU00 Buche natur matt | natural beech matt | hêtre naturel mat | faggio al naturale opaco



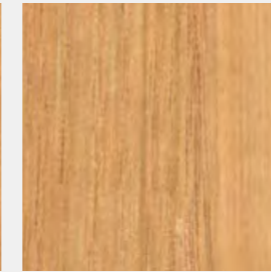
LA10 Lärche | larch | mélèze | larice



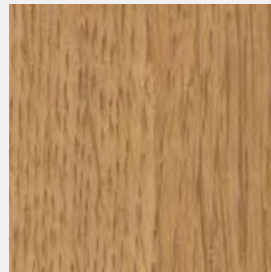
LA00 Lärche matt | larch matte | mélèze mat | larice opaco



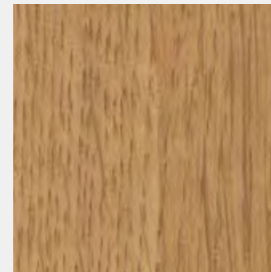
KS10 Kastanie | châtaigne | châtaigne | castagna



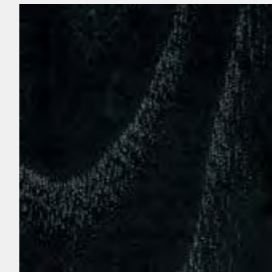
KS00 Kastanie matt | châtaigne matte | châtaigne mat | castagna opaca



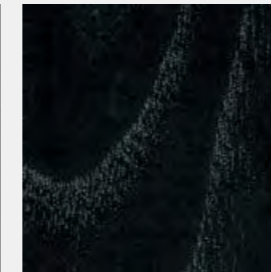
EI10 (DM) Eiche natur | natural oak | chêne naturel | rovere naturale



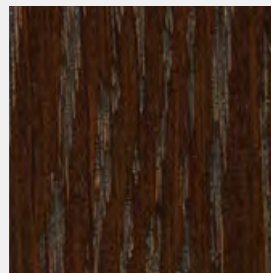
EI00 Eiche natur matt | natural oak matt | chêne naturel mat | rovere naturale opaco



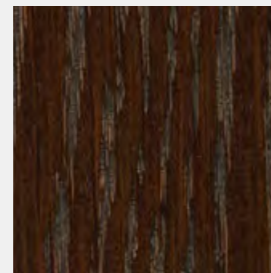
ES33 (VO) Esche schwarz | black ash | frêne noir | frassino nero



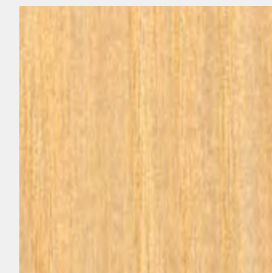
ES03 Esche schwarz matt | black ash matt | frêne noir mat | frassino nero opaco



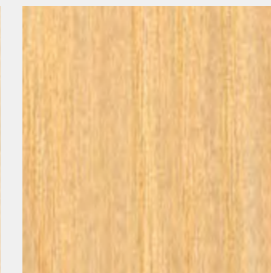
EIW10 (VM) Eiche nach Wenge | wenge-stained oak | chêne wenge | rovere in look wengé



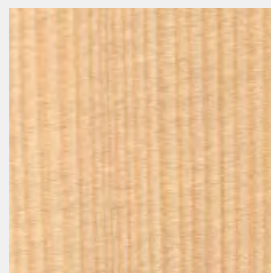
EIW00 Eiche nach Wenge matt | wenge-stained oak matte | chêne wenge mat | rovere in look wengé opaco



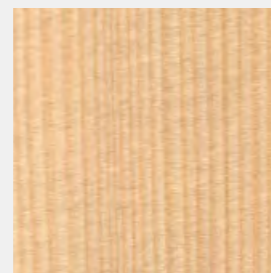
ES10 Esche | ash | frêne | frassino



ES00 Esche matt | ash matt | frêne mat | frassino opaco



WT10 Weisstanne | silver fir | sapin argenté | abete bianco

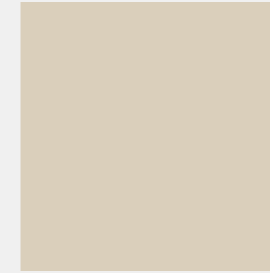


WT00 Weisstanne matt | silver fir matte | sapin argenté mat | abete bianco opaco

LINOLEUM

- ✓ SITAG SCHRANKPROGRAMM*
- ✓ SITAG MCS SCHRANKSYSTEM*
- ✓ SITAG ORGATOWER*
- ✓ SITAGPORT*
- ✓ SITAGACTIVE
- ✓ SITAGACTIVE LIFTMATIC 2.1
- ✓ SITAGGO 2.0
- ✓ SITAG MCS TISCHSYSTEM
- ✓ SITAGMOVE

*nur Deckel | only cabinet top | seulement coiffe | solo coperchio



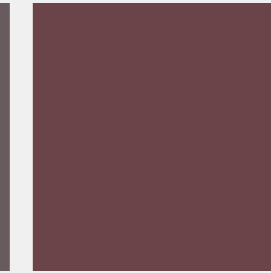
4176 mushroom | mushroom | mushroom | mushroom



4132 ash | ash | cendre | ash



4172 (JM) mauve | mauve | mauve | malva



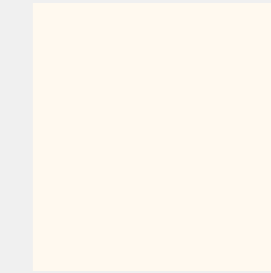
4154 (JB) burgundy | burgundy | bordeaux | borgogna



4023 (JC) nero | black | noir | nero

CDF

- ✓ SITAGACTIVE
- ✓ SITAGACTIVE LIFTMATIC 2.1
- ✓ SITAGGO 2.0
- ✓ SITAG MCS TISCHSYSTEM
- ✓ SITAGMOVE

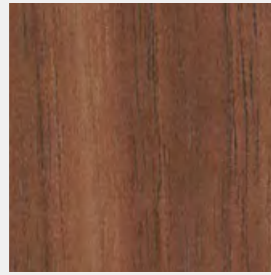


CDF_K310 CDF Dekor weiss, Kante schwarz | CDF decor white, edge black | CDF décor blanc, bord noir | CDF decoro bianco, bordo nero

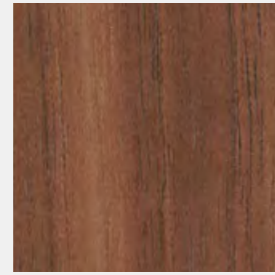
HOLZ 2

Wood 2 | Bois 2 | Legno 2

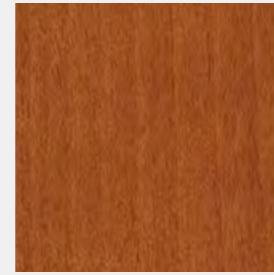
- ✓ SITAG SCHRANKPROGRAMM
- ✓ SITAG MCS SCHRANKSYSTEM
- ✓ SITAG ORGATOWER
- ✓ SITAGPORT
- ✓ SITAGACTIVE
- ✓ SITAGACTIVE LIFTMATIC 2.1
- ✓ SITAGGO 2.0
- ✓ SITAG MCS TISCHSYSTEM
- ✓ SITAG MCS RAUMGLIEDERUNGSSYSTEM
- ✓ SITAGMOVE
- ✓ SITAGASCENT
- ✓ SITAGINLINE



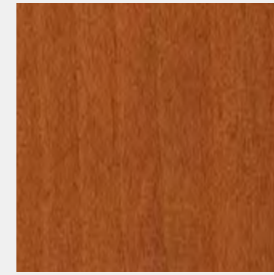
NU10 (VS) Nussbaum | nutwood | noyer | noce



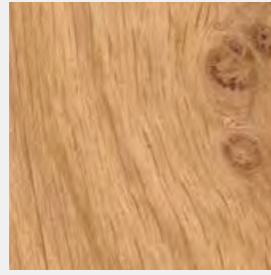
NU00 Nussbaum matt | nutwood matt | noyer mat | noce opaco



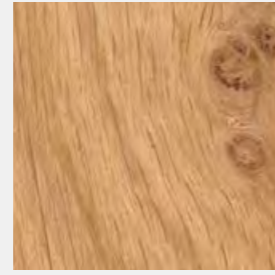
K110 Kirschbaum | cherry | cerisier | ciliegio



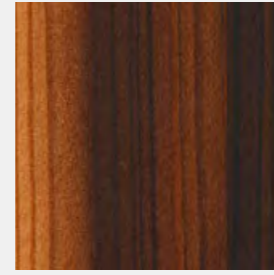
K100 Kirschbaum matt | cherry matte | cerisier mat | ciliegio opaco



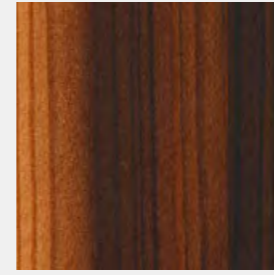
EIA10 Eiche astig | knotty oak | chêne noueux | rovere nodoso



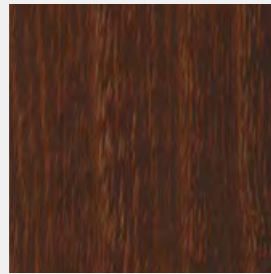
EIA00 Eiche astig matt | knotty oak matte | chêne noueux mat | rovere nodoso opaco



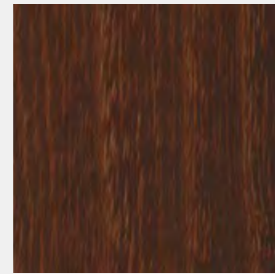
LAG10 Lärche geräuchert | smoked larch | mélèze fumé | larice affumicato



LAG00 Lärche geräuchert matt | smoked larch matte | mélèze fumé mat | larice affumicato opaco



AKG10 Akazie geräuchert | smoked acacia | acacia fumé | acacia affumicato

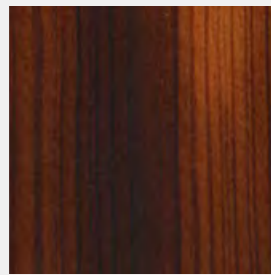


AKG00 Akazie geräuchert matt | smoked acacia matte | acacia fumé mat | acacia affumicato opaco

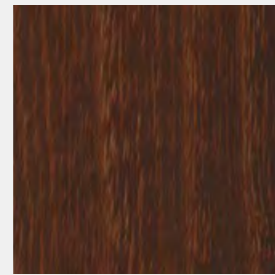
HOLZ 2HG

Wood 2HG | Bois 2HG | Legno 2HG

- ✓ SITAGINLINE



LAG200 Lärche geräuchert hochglanz | smoked larch high gloss | mélèze fumé brillant | larice affumicato lucida



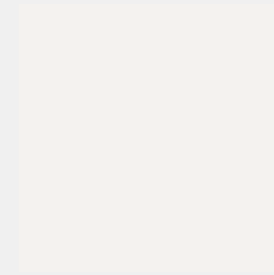
AKG200 Akazie geräuchert hochglanz | smoked acacia high gloss | acacia fumé brillant | acacia affumicato lucida

STRUKTUR-LACK

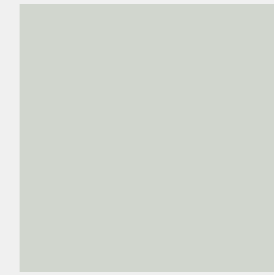
(für Holzoberflächen)

Structured varnish (for wood surfaces) | Vernis structuré (pour surfaces en bois) | Vernice strutturata (per superfici in legno)

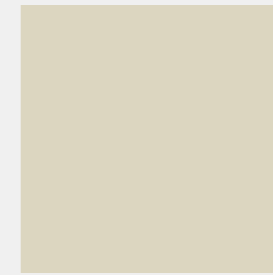
- ✓ SITAG SCHRANKPROGRAMM
- ✓ SITAG MCS SCHRANKSYSTEM
- ✓ SITAG ORGATOWER
- ✓ SITAGPORT
- ✓ SITAGINLINE



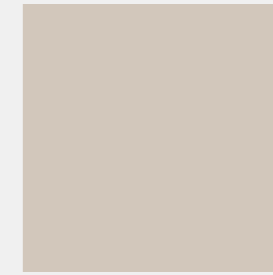
ST01 weiss | white | blanc | Bianco (NCS-0500-N)



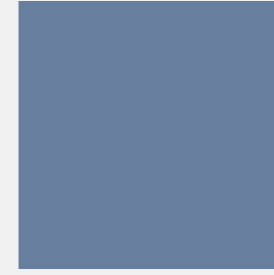
ST10 weissgrau | white-grey | blanc gris | bianco grigio (NCS-1502-B)



ST90 hell-beige | light beige | beige clair | beige chiaro (NCS-0505-Y10R)



ST15 kaschmirgrau | cashmere grey | gris kashmir | grigio cashmere (NCS-S3005-Y50R)



ST31 rauchblau | smoky blue | bleu fumé | blu fumoso (NCS-S5020-R90B)



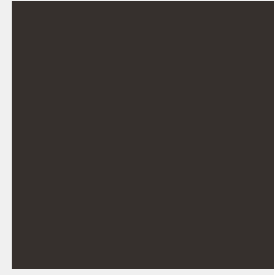
ST24 rot-braun | red-brown | rouge brun | Rosso-marrone (NCS-6020-R10B)



ST28 agavengrün | agave green | vert agave | verde agave (NCS-S6010-G50Y)



ST29 trüffelbraun | truffle brown | brun truffe | marrone tartufo (NCS-S5005-Y50R)

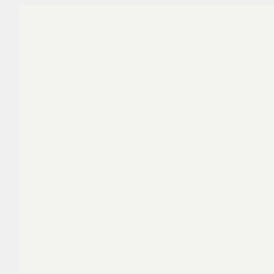


ST13 braun-schwarz | brown-black | brun noir | Nero marrone (NCS-S9000-N)

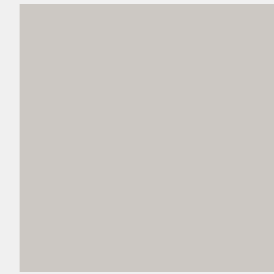
BELAG STUMPFMATT (FENIX)

Synthetic coating dull matt | Revêtement mat terne | Rivestimento opaco

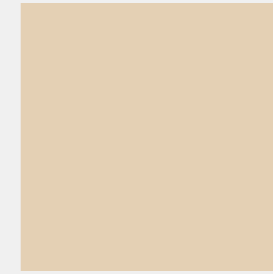
- ✓ SITAGACTIVE
- ✓ SITAGACTIVE LIFTMATIC 2.1
- ✓ SITAG MCS TISCHSYSTEM
- ✓ SITAGGO 2.0
- ✓ SITAGMOVE
- ✓ SITAGASCENT
- ✓ SITAGINLINE



K4318 (KS) weiss | white | blanc | bianco



K4319 hellgrau | light grey | gris clair | grigio chiaro



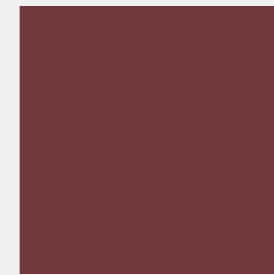
K4312 beige | beige | beige | beige



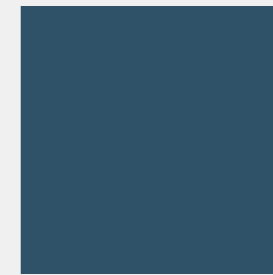
K4315 Organza | organza | organza | organza



K4328 (KR) olivgrün | olive green | vert olive | verde oliva



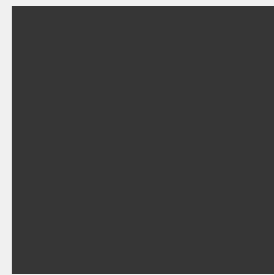
K4330 (KP) bordeaux | bordeaux | bordeaux | bordeaux



K4331 (KO) nachtblau | night blue | bleu nuit | blu notte



K4320 (KN) anthrazit | anthracite | anthracite | anthracite



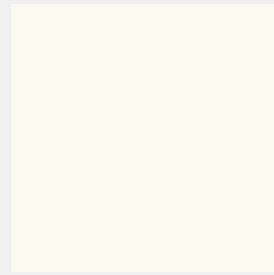
K4317 (KJ) schwarz | black | noir | nero

KUNSTSTOFF

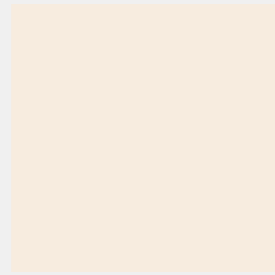
(Plattenbeschichtung)

Synthetic (board coating) |
Synthétique (Revêtement
de panneaux) | Materiale
sintetico (rivestimento a
pannelli)

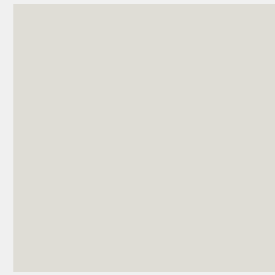
- ✓ SITAG SCHRANKPROGRAMM
- ✓ SITAG MCS SCHRANKSYSTEM
- ✓ SITAGPORT
- ✓ SITAG ORGATOWER
- ✓ SITAGACTIVE
- ✓ SITAGACTIVE LIFTMATIC 2.1
- ✓ SITAGGO 2.0
- ✓ SITAG MCS TISCHSYSTEM
- ✓ SITAG MCS RAUMGLIEDERUNGSSYSTEM
- ✓ SITAGMOVE



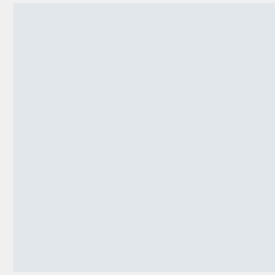
K310 weiss | white | blanc |
bianco (NCS-S0502-Y)



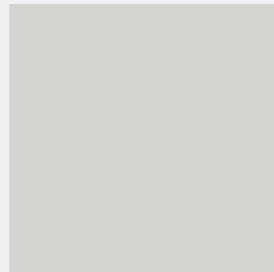
K216 (AA) vanille | vanilla |
vanille | vaniglia (NCS-S1002-Y20R)



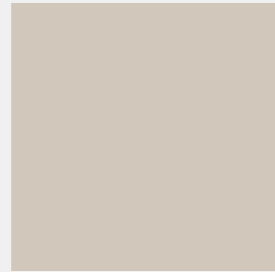
K775 (MB/FN) weissbeige
| white beige | blanc beige | beige
bianco (NCS-S1002-Y)



K245 weissgrau | pale grey | gris
blanc | bianco grigio (NCS-S0502-B)



K708 (MP/BW) mittelgrau
| medium grey | gris moyen | grigio
medio (NCS-S2002-G50Y)



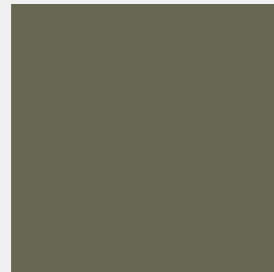
K702 (NK/HC) kaschmirgrau |
cashmere grey | gris kashmir | grigio
cashmere (NCS-S2005-Y60R)



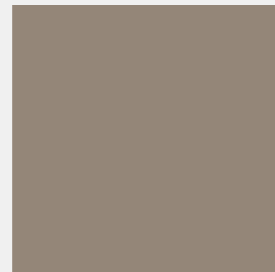
K507 (ST) rauchblau | smoky
blue | bleu fumé | blu fumoso
(NCS-S5020-R90B)



K231 anthrazit | anthracite |
anthracite | antracite
(NCS-S7502-B)



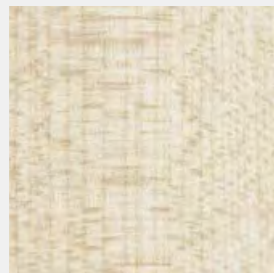
K645 agavengrün | agave green |
vert agave | verde agave
(NCS-S6010-G70Y)



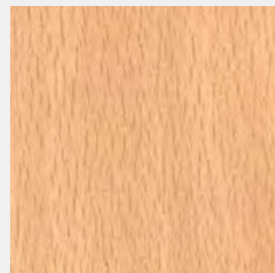
K748 trüffelbraun | truffle brown
| brun truffe | marrone tartufo
(NCS-S7005-Y50R)



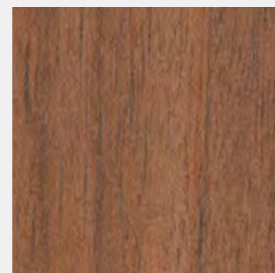
K999 (CC/DD) schwarz |
black | noir | nero
(NCS-S9000-N)



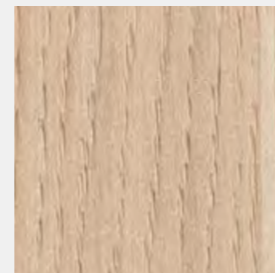
KAD Ahorn Dekor | maple decor |
décor érable | acero decorativo



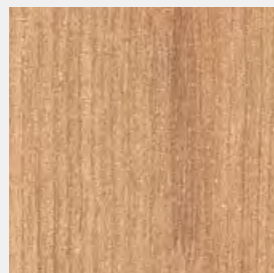
KBD (MM/HF) Buche Dekor |
maple decor | décor hêtre | faggio
decorativo



KNU00 (NW) Nussbaum
Dekor | nutwood decor | décor
noyer | noce decorativo



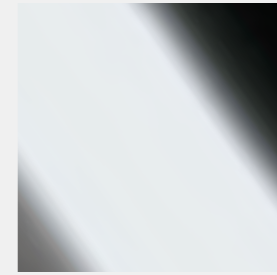
KED (ML/HE) Eiche Dekor |
oak decor | décor chêne | decoro
rovere



KERD (HO/KU) Eiche rustikal
Dekor | oak rustic decor | décor chêne
rustique | decoro rovere rustico

OBERFLÄCHE VEREDELT

Premium finish | Finition
spéciale | Finitura speciale



CR verchromt | chrome-finish |
chromé | cromato



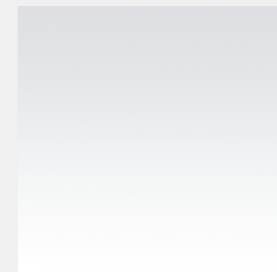
CN Chromstahl | chrome steel |
acier chromé | acciaio al cromo

- ✓ SITAG MCS TISCHSYSTEM
- ✓ SITAGASCENT
- ✓ SITAGACTIVE
- ✓ SITAGMOVE

- ✓ SITAG MCS RAUMGLIEDERUNGSSYSTEM

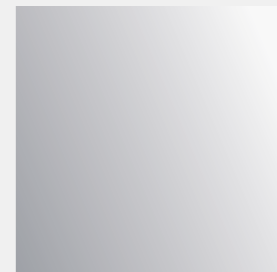
GLAS SECURISIERT

Security glass | verre de
sécurité | vetro di sicurezza



KGL Klarglas | clear glass | verre
clair | vetro trasparente

- ✓ SITAG MCS SCHRANKSYSTEM



MGL Mattglas | frosted glass
| verre mat | vetro opaco

- ✓ SITAG SCHRANKPROGRAMM
- ✓ SITAG MCS RAUMGLIEDERUNGSSYSTEM
- ✓ SITAG MCS SCHRANKSYSTEM

PULVER- BESCHICHTETE FARBEN

(für Metalloberflächen)

Powder-coat colours (for metal surfaces) | Peinture par poudrage (pour surfaces métalliques) | Colori a polvere (per superfici metalliche)



AM anthrazit-metallic | metallic anthracite | anthracite métallisé | antracite metallizzato (ähnlich | similar | similaire | simile RAL 7021)

✓ SITAGACTIVE
✓ SITAGACTIVE LIFTMATIC 2.1
✓ SITAG MCS TISCHSYSTEM
✓ SITAG MCS RAUMGLIEDERUNGSSYSTEM
✓ SITAGINLINE



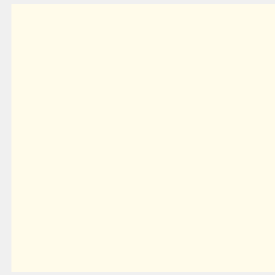
SI silber | silver | argent | argento (ähnlich | similar | similaire | simile RAL 9006)

✓ SITAGACTIVE
✓ SITAG MCS TISCHSYSTEM
✓ SITAG MCS RAUMGLIEDERUNGSSYSTEM
✓ SITAGINLINE



SW schwarz | black | noir | nero (RAL 9011)

✓ SITAGACTIVE
✓ SITAG MCS RAUMGLIEDERUNGSSYSTEM
✓ SITAGASCENT
✓ SITAGINLINE



PW perlweiss | pearl white | blanc perle | bianco perla (RAL 9010)

✓ SITAGACTIVE
✓ SITAGACTIVE LIFTMATIC 2.1
✓ SITAG MCS TISCHSYSTEM
✓ SITAG MCS RAUMGLIEDERUNGSSYSTEM
✓ SITAGINLINE

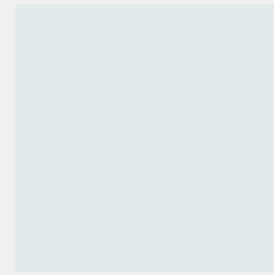


BS braun-schwarz | brown-black | brun noir | nero brunastro (RAL 8022)

✓ SITAG MCS RAUMGLIEDERUNGSSYSTEM
✓ SITAGINLINE

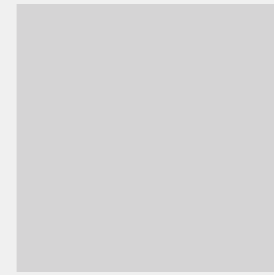
ROLLLADEN

Roller shutters | Rideaux | Avvolgibili



WG weissgrau | white grey | gris blanc | bianco grigio

✓ SITAG SCHRANKPROGRAMM
✓ SITAG MCS SCHRANKSYSTEM



HG hellgrau | light grey | gris clair | grigio chiaro

✓ SITAG SCHRANKPROGRAMM



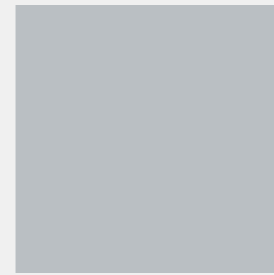
SW schwarz | black | noir | nero

✓ SITAG SCHRANKPROGRAMM



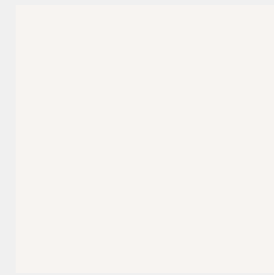
AZ anthrazit | anthracite | anthracite | antracite

✓ SITAG SCHRANKPROGRAMM
✓ SITAG MCS SCHRANKSYSTEM



SI silber | silver | argent | argento

✓ SITAG SCHRANKPROGRAMM



WE weiss | white | blanc | bianco

✓ SITAG SCHRANKPROGRAMM
✓ SITAG MCS SCHRANKSYSTEM

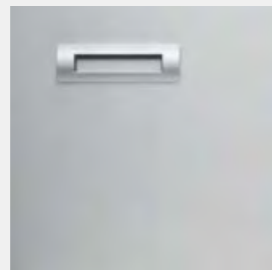
MUSCHEL-GRIF

Recessed handles |
Poignée coquille | Maniglia
a conchiglia

✓ SITAG SCHRANKPROGRAMM
✓ SITAG MCS SCHRANKSYSTEM
✓ SITAG ORGATOWER



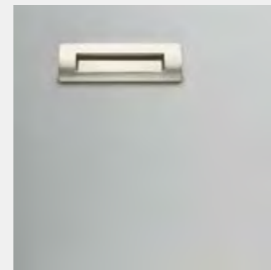
AM anthrazit-metallic | metallic
anthracite | anthracite métallisé |
antracite metallizzato



SI silber | silver | argent | argento



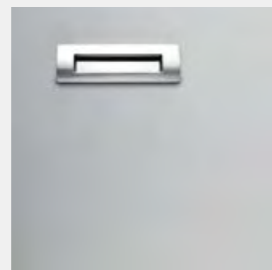
SW schwarz | black | noir | nero



PW perlweiss | pearl white | blanc
perle | bianco perla



ALU Aluminium | aluminium |
aluminium | aluminium



CR verchromt | chrome finish |
chromé | cromato

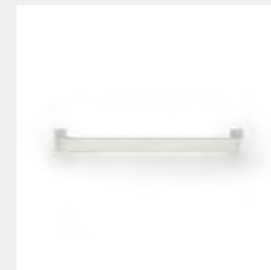
C-GRIF

C-handles | Poignée C |
Maniglia C

✓ SITAG SCHRANKPROGRAMM
✓ SITAG MCS SCHRANKSYSTEM
✓ SITAG ORGATOWER



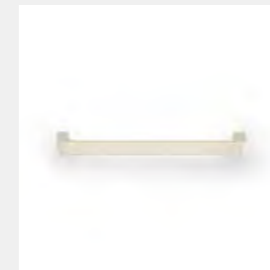
AM anthrazit-metallic | metallic
anthracite | anthracite métallisé |
antracite metallizzato



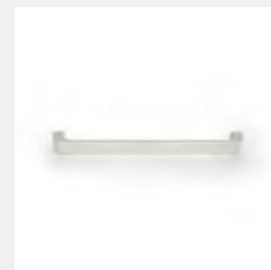
SI silber | silver | argent | argento



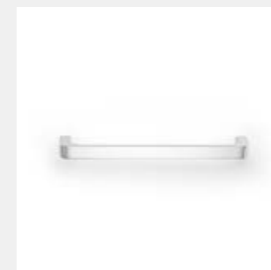
SW schwarz | black | noir | nero



PW perlweiss | pearl white | blanc
perle | bianco perla



ALU Aluminium | aluminium |
aluminium | aluminium



CR verchromt | chrome finish |
chromé | cromato

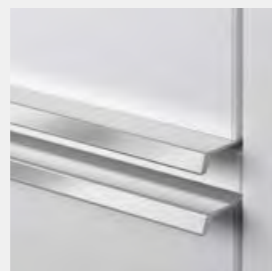
LISENEN-GRIF

L-section pull handles |
Poignée lésène | Presa a
lesena

✓ SITAG SCHRANKPROGRAMM
✓ SITAG MCS SCHRANKSYSTEM
✓ SITAG ORGATOWER



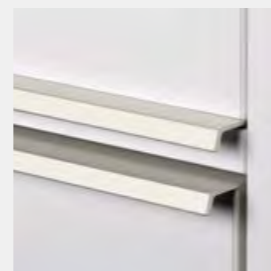
AM anthrazit-metallic | metallic
anthracite | anthracite métallisé |
antracite metallizzato



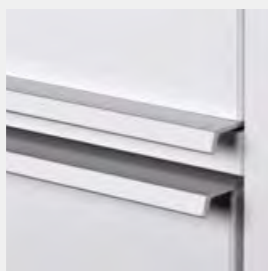
SI silber | silver | argent | argento



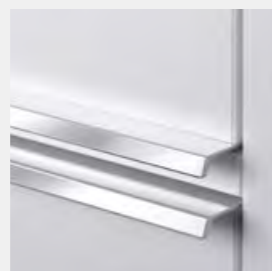
SW schwarz | black | noir | nero



PW perlweiss | pearl white | blanc
perle | bianco perla



ALU Aluminium | aluminium |
aluminium | aluminium



CR verchromt | chrome finish |
chromé | cromato

STANGEN-GRIF

T-bar handles | Poignée
tige | Maniglia a sbarra

✓ SITAG SCHRANKPROGRAMM
✓ SITAG MCS SCHRANKSYSTEM
✓ SITAG ORGATOWER



AM anthrazit-metallic | metallic
anthracite | anthracite métallisé |
antracite metallizzato



SI silber | silver | argent | argento



SW schwarz | black | noir | nero



PW perlweiss | pearl white | blanc
perle | bianco perla



ALU Aluminium | aluminium |
aluminium | aluminium



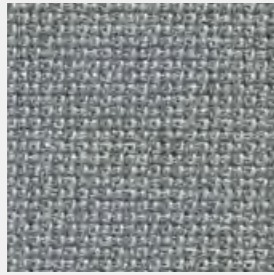
CR verchromt | chrome finish |
chromé | cromato

STOFF TWIST MELANGE STELLWÄNDE

Fabric Twist Melange,
Partition walls | Tissu Twist
Melange, Cloisons | Tessuto
Twist Melange, Pannelli e
schermi protettivi

- ✓ SITAGACTIVE*
- ✓ SITAGACTIVE LIFTMATIC 2.1*
- ✓ SITAGGO 2.0*
- ✓ SITAG MCS TISCHSYSTEM*
- ✓ SITAG MCS SCHRANKSYSTEM
- ✓ SITAG MCS
RAUMGLIEDERUNGSSYSTEM
- ✓ SITAG SCHRANKPROGRAMM

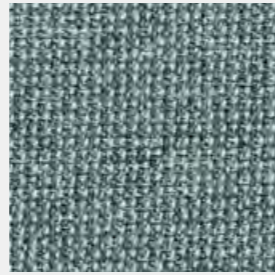
*Aufsatzwände | Attached cabinet
elements | Élément de structure
armoire | Elemento applicabile per
armadio



TM75 grau | grey | gris | grigio



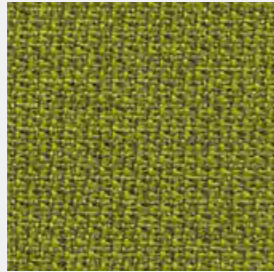
TM09 sand | sandy | sable | sabbia



TM39 mint | mint | menthe | menta



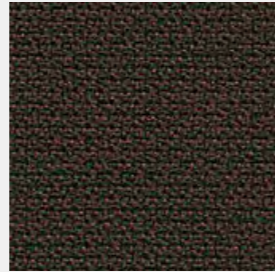
TM80 blau | blue | bleu | blu



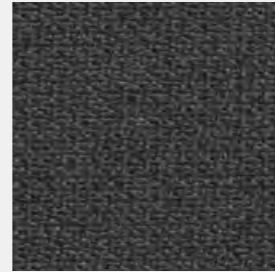
TM35 grün | green | vert | verde



TM37 oliv | olive | olive | oliva



TM30 braun-schwarz | brownish
black | noir brun | nero brunastro



TM77 anthrazit | anthracite
anthracite | antracite

STOFF LUCIA STELLWÄNDE

Fabric Lucia, Partition
walls | Tissu Lucia, Cloisons
| Tessuto Lucia, Pannelli e
schermi, protettivi

- ✓ SITAGACTIVE*
- ✓ SITAGACTIVE LIFTMATIC 2.1*
- ✓ SITAGGO 2.0*
- ✓ SITAG MCS TISCHSYSTEM*
- ✓ SITAG MCS SCHRANKSYSTEM
- ✓ SITAG MCS
RAUMGLIEDERUNGSSYSTEM
- ✓ SITAG SCHRANKPROGRAMM

*Aufsatzwände | Attached cabinet
elements | Élément de structure
armoire | Elemento applicabile per
armadio



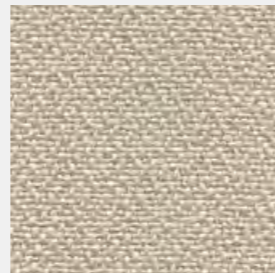
4869 blaugrau | blue-grey | gris
bleu | grigio blu



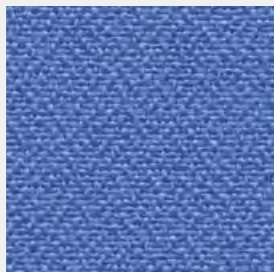
4871 grau | grey | gris | grigio



4834 hellgrün | bright green |
vert clair | verde chiaro



4809 sand | sandy | sable | sabbia



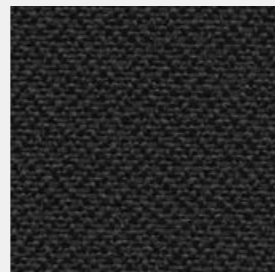
4888 hellblau | bright blue | bleu
clair | celeste



4883 dunkelblau | dark blue | bleu
foncé | blu scuro



4860 leuchtrot | vivid red | rouge
lumineux | rosso luminoso

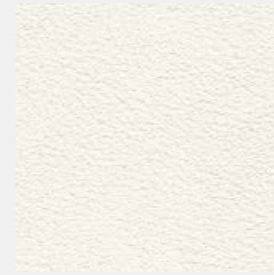


4885 schwarz | black | noir | nero

LEDER SELECT

Leather "Select" | Cuir
"Select" | Pelle "Select"

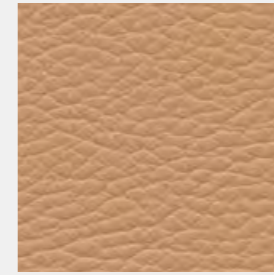
- ✓ SITAGACTIVE
- ✓ SITAGACTIVE LIFTMATIC 2.1
- ✓ SITAGGO 2.0
- ✓ SITAG MCS TISCHSYSTEM
- ✓ SITAG MCS
RAUMGLIEDERUNGSSYSTEM
- ✓ SITAG ASCENT
- ✓ SITAGINLINE



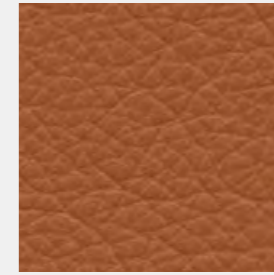
LS390 (LS02) weiss | white |
blanc | bianco



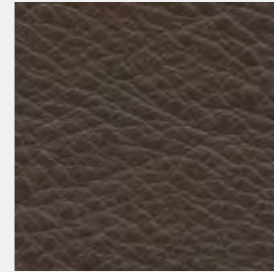
LS310 kaschmir | cashmere |
cachemire | cashmere



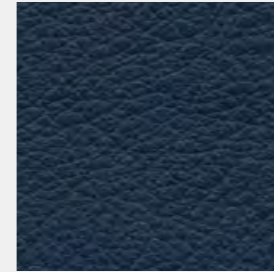
LS325 (LS09) sand | sandy |
sable | sabbia



LS307 (LS50) cognac | cognac |
cognac | cognac



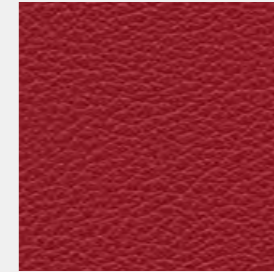
LS306 (LS30) mokka | mocha
| moka | mocca



LS350 (LS82) marine | navy
blue | bleu marine | marineblu



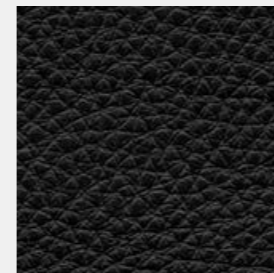
LS620 olivgrün | olive green | vert
olive | verde oliva



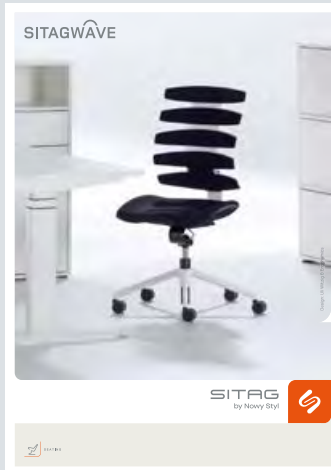
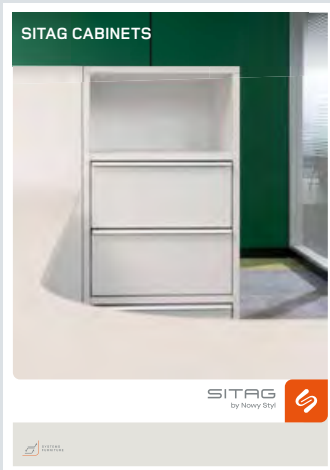
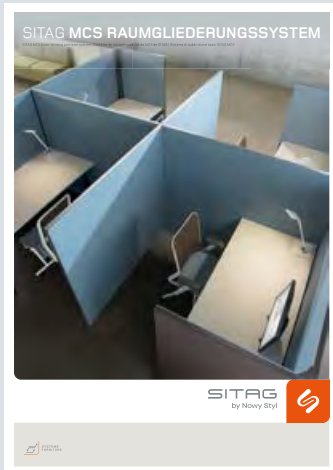
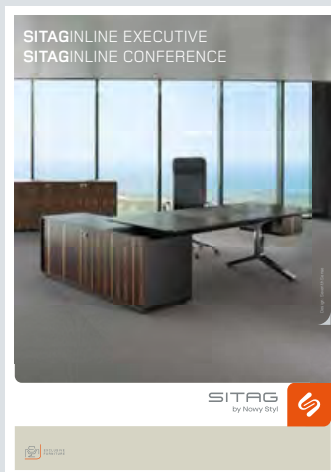
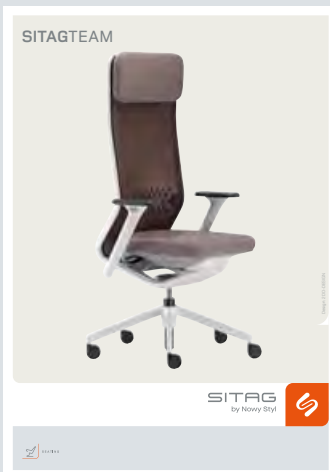
LS339 weinrot | wine red | rouge
vin | rosso vino



LS358 steingrau | stone grey |
gris pierre | grigio pietra



LS301 (LS85) schwarz | black
| noir | nero



| D | Technische Änderungen, Druckfehler und Programmänderungen vorbehalten. Farbabweichungen von den Originalfarben sind drucktechnisch bedingt.
| E | Subject to technical and programme alterations, printing errors, and other errors. Printed colours may vary from actual colours.
| F | Sous réserve de modifications techniques, d'erreurs d'impression et d'altérations du programme. Les couleurs reproduites peuvent différer des couleurs originales.
| I | Con riserva di modifiche tecniche, errori di stampa e cambiamenti di programma. Eventuali differenze di colore tra le immagini e i prodotti reali sono dovute alla stampa.



SITAG by Nowy Styl SA
Fléchères 7A
CH-1274 Signy
T +41 22 3614727
info.nyon@sitag.ch

SITAG by Nowy Styl AG
Brown-Boveri-Str. 5
CH-8050 Zürich-Oerlikon
T +41 44 8637272
info.zuerich@sitag.ch

Nowy Styl Headquarters
ul. Pużaka 49
PL-38-400 Krosno
T +48 572 900 333
sales@nowystyl.com

SITAG by Nowy Styl AG

T +41 81 7581818

Simon Frick-Str. 3a
CH-9466 Sennwald

info@sitag.ch
www.sitag.ch

SITAG
by Nowy Styl

