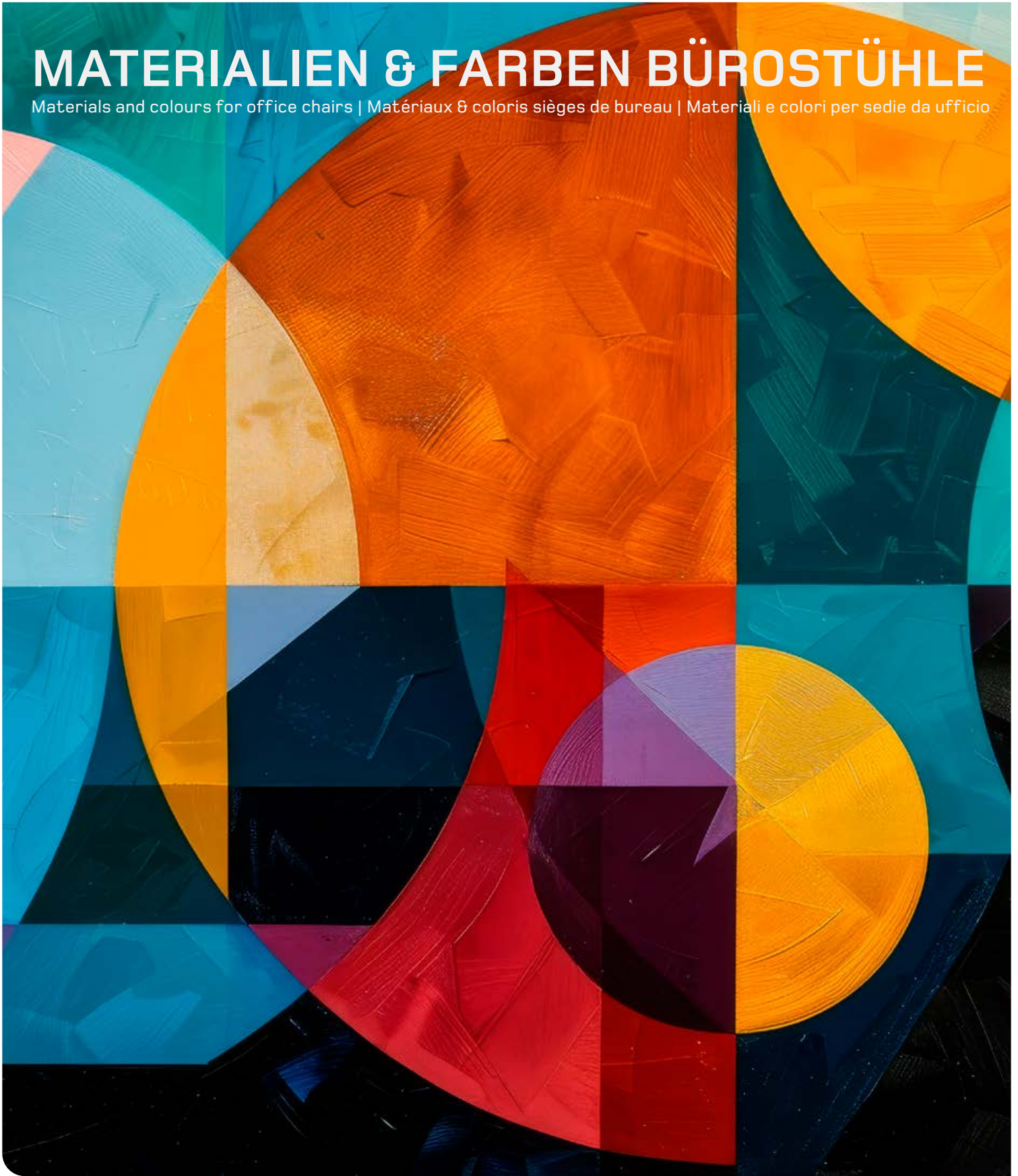


MATERIALIEN & FARBEN BÜROSTÜHLE

Materials and colours for office chairs | Matériaux & coloris sièges de bureau | Materiali e colori per sedie da ufficio



SITAG
by Nowy Styl



Farbe ist mehr als Information.
Sie erzeugt Emotionen, schafft Atmosphäre,
erst durch Farbe fühlen wir uns wohl.
Farbe weckt Assoziationen, beeinflusst
die Stimmung und prägt Marken.

| E | COLOUR IS MORE THAN JUST INFORMATION. It produces emotions and creates atmosphere – we all need colour to feel good. Colour awakens associations, influences moods and distinguishes brands. We provide our Mood Boards to give you an overview of our chair cover material, their available colours and their structures. Our Mood Boards will hopefully also provide stimulation for comprehensive design of your office ambience, sources of inspiration for colour combinations, and support in the creation of your own moods in office space.

| F | LA COULEUR VÉHICULE PLUS QU'UNE INFORMATION. Elle suscite des émotions, crée une ambiance et, au final, elle nous met à l'aise. La couleur suscite des associations, conditionne notre humeur et caractérise les marques. NOS «mood boards» ont pour objectif de vous donner un aperçu sur nos tissus d'ameublement, leurs coloris et textures. Ils ont aussi pour ambition d'encourager la conception globale de votre intérieur, ils sont une source d'inspiration au titre de la combinaison des couleurs et ils ont pour prétention d'orienter la démarche créative visant les ambiances d'espace.

| I | IL COLORE VA OLTRE L'INFORMAZIONE. Esso genera emozioni, crea atmosfera e ci fa sentire a nostro agio. Il colore stimola associazioni, influenza l'umore e caratterizza marchi. I nostri „Mood boards“ vogliono fornirvi un quadro panoramico dei nostri materiali di rivestimento, con i loro colori e le loro strutture. Essi dovrebbero però anche darvi dei suggerimenti su come poter realizzare un ambiente nel suo complesso, farvi da ispirazione per abbinamenti di colore e indicarvi come creare una determinata atmosfera nei vari locali.

Unsere „Mood Boards“ sollen Ihnen eine Übersicht über unsere Bezugsmaterialien, ihre Farben und Strukturen geben.

Sie sollen aber auch Anregung geben für die umfassende Gestaltung eines Ambientes, Inspirationsquelle für Farbkombinationen sein und Hinweise zur Erzeugung von Stimmungen im Raum geben.

FARBEN

COLOURS

COULEURS

COLORI



FARBE IM BÜRO: DER SCHLÜSSEL ZU KREATIVITÄT UND PRODUKTIVITÄT

| D | FARBEN SIND BEI DER BÜRO-GESTALTUNG VON IMMENSER WICHTIGKEIT. Farben beeinflussen unsere Effektivität, unser Wohlbefinden und unsere Interaktionen. Eine passende Farbgestaltung wertet nicht nur das ästhetische Erscheinungsbild Ihres Büros auf, sondern fördert auch die Konzentration, Kreativität und Teamarbeit. Bei der Gestaltung von Räumen sollten folgende Farbgruppen berücksichtigt werden: „Energie“ für Schwung und Inspiration, „Ruhe“ für Konzentration und Entspannung und „Beziehungen“ für eine freundliche Atmosphäre. Um ein harmonisches und funktionales Büro zu schaffen, müssen Sie sich bewusst für ein geplantes Farbkonzept entscheiden, das den spezifischen Bedürfnissen und Zielsetzungen Ihres Unternehmens entspricht.

| E | COLOR IS VERY IMPORTANT IN OFFICE DESIGN. Color affects our efficiency, well-being and interaction. Appropriate color design can not only enhance the aesthetic appearance of your office, but also stimulate your concentration, creativity and team spirit. When designing an office, the following colors should be considered: „energy“ for motivation and inspiration, „tranquility“ for concentration and relaxation, and „relationship“ for a friendly atmosphere. In order to create a harmonious, functional office, you must consciously choose a planned color concept to meet your company's specific needs and goals.

| F | D | LES COULEURS SONT D'UNE IMMENSE IMPORTANCE DANS L'AMÉNAGEMENT DES BUREAUX. Les couleurs influencent notre efficacité, notre bien-être et nos interactions. Une palette de couleurs appropriée améliore non seulement l'aspect esthétique de votre bureau, mais peut également stimuler la concentration, la créativité et le travail d'équipe. Lors de la conception des bureaux, les groupes de couleurs suivants doivent être pris en compte : « Énergie » pour l'élan et l'inspiration, « Calme » pour la concentration et la détente, et « Relations » pour une atmosphère conviviale. Pour créer un bureau harmonieux et fonctionnel, vous devez prendre une décision consciente sur une palette de couleurs planifiée qui répond aux besoins et aux objectifs spécifiques de votre entreprise.

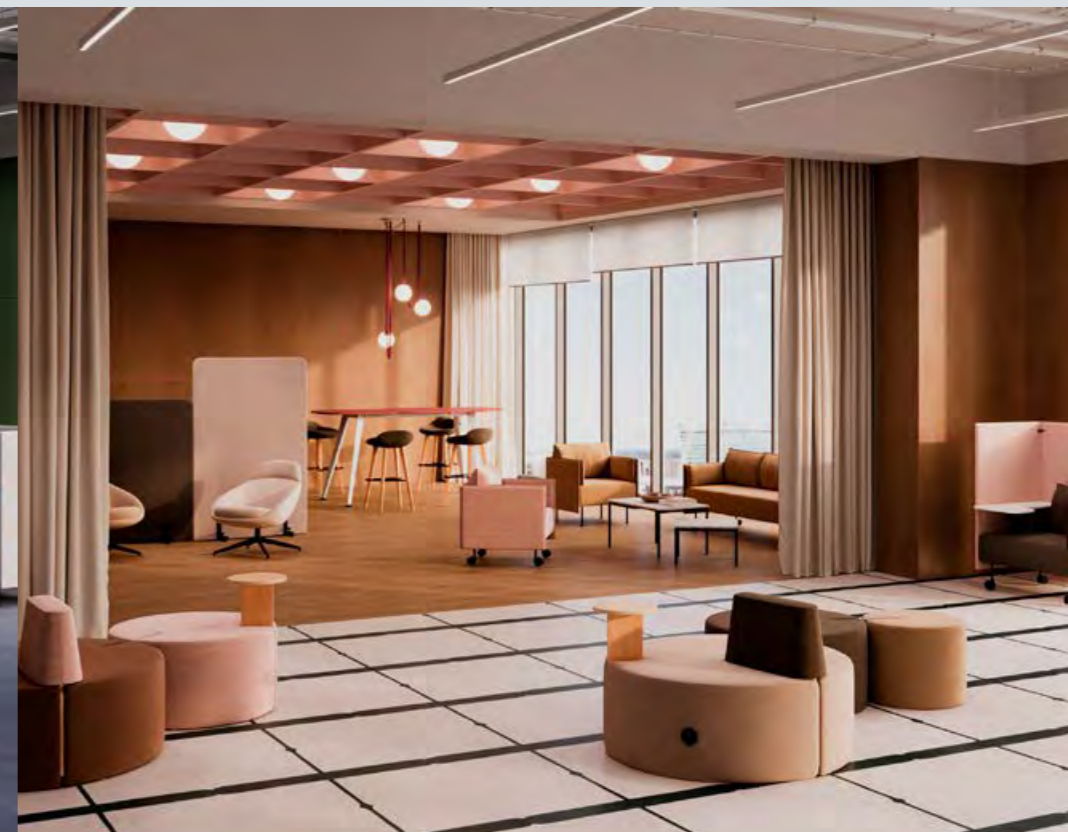
| I | I COLORI HANNO UN'IMPORTANZA IMMENSA NELLA PROGETTAZIONE DEGLI UFFICI. I colori influenzano la nostra efficacia, il nostro benessere e le nostre interazioni. Una combinazione di colori adeguata non solo migliora l'aspetto estetico dell'ufficio, ma può anche favorire la concentrazione, la creatività e il lavoro di squadra. Quando si progettano gli uffici, si dovrebbero prendere in considerazione i seguenti gruppi di colori: „Energia“ per la spinta e l'ispirazione, „Calma“ per la concentrazione e il relax e „Relazioni“ per un'atmosfera amichevole. Per creare un ufficio armonioso e funzionale, è necessario decidere consapevolmente un concetto di colore pianificato che soddisfi le esigenze e gli obiettivi specifici della vostra azienda.

| D | VERÄNDERUNG NUR DURCH FARBE UND MATERIAL: Dreimal der gleiche Raum, die gleichen Möbel und die gleiche Raumaufteilung.

| E | CHANGE ONLY THROUGH COLOR AND MATERIAL: three times the same room, the same furniture and the same room layout.

| F | CHANGER UNIQUEMENT PAR LA COULEUR ET LA MATIÈRE : la même pièce trois fois, le même mobilier et la même disposition des pièces.

| I | CAMBIA SOLO ATTRAVERSO IL COLORE E IL MATERIALE: Tre volte lo stesso spazio, gli stessi mobili come un divano e una tavola, e la stessa disposizione della stanza.



SMART LUXURY



Stil, Eleganz und Klasse kommen in dieser Farbgruppe zum Ausdruck. Sattes Rot, das an edlen Rotwein erinnert, wird durch Blau- und Grautöne wie Marine und Anthrazit in Szene gesetzt.

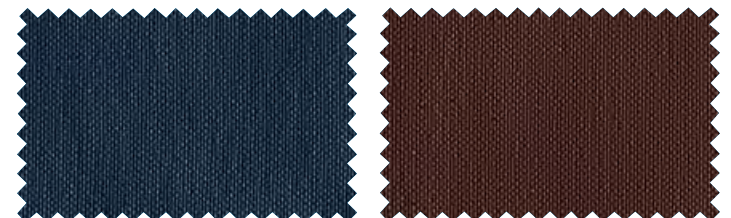


| E | THIS COLOUR GROUP VIVIDLY EXPRESSES STYLE, ELEGANCE AND CLASS. Rich and deep red – that reminds us of quality red wine – is dramatically displayed together in contrast with blue and grey shades such as navy blue and anthracite (slate grey).

| F | CE GROUPE DE COLORIS EXPRIME LE STYLE, L'ÉLÉGANCE ET LA CLASSE. Le rouge soutenu suggérant le vin rouge est joliment mis en lumière par les teintes bleues et grises telles que le bleu marine et l'anthracite.

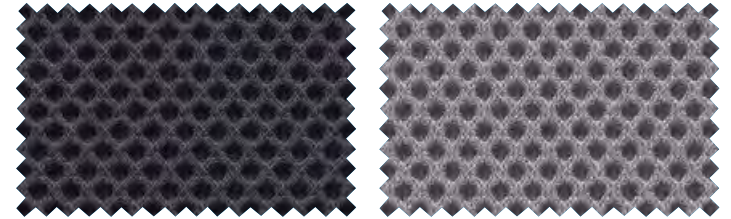
| I | QUESTO GRUPPO DI COLORI ESPRIME STILE, ELEGANZA E CLASSE. Un rosso intenso che ricorda quello di un buon vino viene messo in scena con tonalità di blu e grigio come l'azzurro marino e l'anthracite.

SMART LUXURY



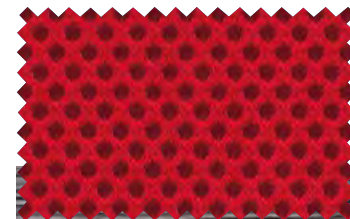
SX3007
nachtblau | night blue | bleu nuit | blu notte

SX4024
braun | brown | brun | bruno



RN60025 (RU77)
dunkelgrau | dark grey | gris foncé | grigio scuro

RN60011 (RU75)
grau | grey | gris | grigio



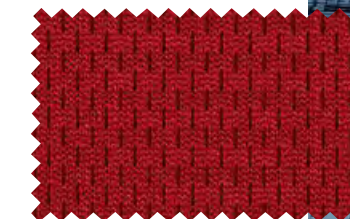
RN64089 (RU60)
rot | red | rouge | rosso



RX873
nachtblau | night blue | bleu nuit | blu notte



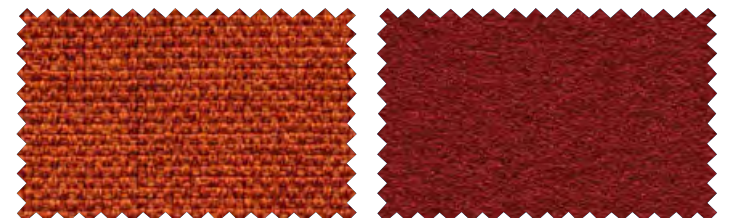
RX173
anthrazit | anthracite | anthracite | antracite



FL64089 (FL60)
rot | red | rouge | rosso

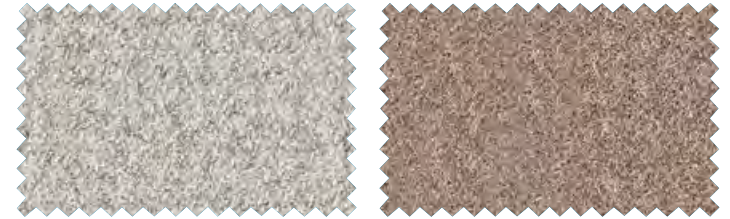


ME64123
dunkelrot | dark red | rouge foncé | rosso scuro



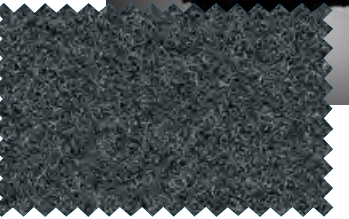
ME63017 (ME55)
orange | orange | orange | arancia

LDS79
bordeaux | bordeaux | bordeaux | bordeaux

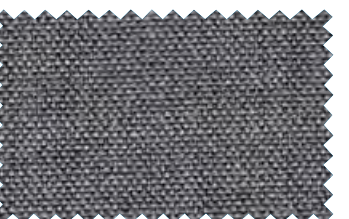


LDS08
hellgrau meliert | light grey mottled | gris clair chiné | grigio chiaro screziato

LDS32
hellbraun meliert | bright brown mottled | brun clair chiné | marrone chiaro screziato



LDS17
anthrazit meliert | anthracite mottled | anthracite chiné | anthracite screziato



RX143
grau | grey | gris | grigio



RX866
dunkelblau | dark blue | bleu foncé | blu scuro



LS390 (LS02)
weiss | white | blanc | bianco



LS306 (LS30)
mokka | mocha | moka | mocha



LS307 (LS50)
cognac | cognac | cognac | cognac



LS301 (LS85)
schwarz | black | noir | nero



LS350 (LS82)
marine | navy blue | bleu marine | blu marino



STG65011
nachtblau | night blue | bleu nuit | blu notte



ST999 (ST85)
schwarz | black | noir | nero



RX662
rost | rust | rouille | ruggine



MLF16
dunkelgrau | dark grey | gris foncé | grigio scuro



MLF28
schwarz | black | noir | nero



VL3067
dunkelblau | dark blue | bleu foncé | blu scuro



MLF36
nachtblau | night blue | bleu nuit | blu notte



RX452
orange | orange | orange | arancio



NATURAL MOOD

Sanftes Blau und warme Brauntöne und zurückhaltendes Grün. Diese Farbfamilie steht ganz im Zeichen der Natur. Grüne Strukturstoffe werden kombiniert mit gedecktem Weiss und setzen Ihren Raum in ein erfrischendes und zugleich ruhiges Licht.



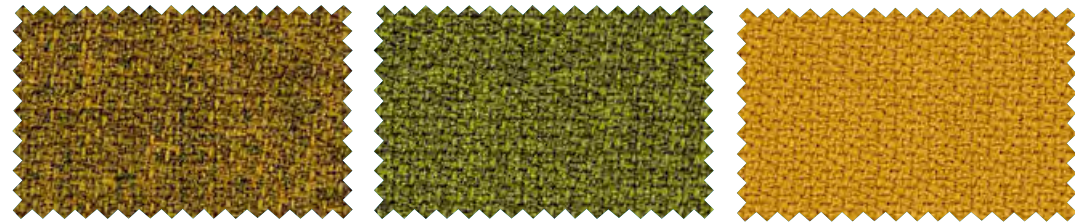
| E | SOFT BLUE, WARM BROWN SHADES AND DISCREET GREEN. This colour family belongs unmistakably to the signs of nature. Green structure materials are combined with subdued white – which puts your room in a refreshing and, at the same time, a peaceful light.

| F | AVEC SON BLEU PÂLE, SES TEINTES BRUNES CHALEUREUSES ET SON VERT SOBRE, cette famille de couleurs est entièrement placée sous le signe de la nature. Les tissus structurés en vert côtoient le blanc discret et baignent votre intérieur dans une lumière à la fois de fraîcheur et de sérénité.

| I | BLU MORBIDO, CALDE TONALITÀ DI MARRONE E VERDE NON TROPPO ACCESSO. Questo gruppo di colori si presenta del tutto all'insegna della natura. Tessuti verdi strutturati vengono abbinati a un bianco sporco trasponendo il vostro spazio in una luce vitalizzante e al contempo pacata.



NATURAL MOOD



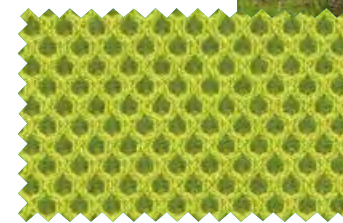
STM62057
gelb meliert | yellow mottled | jaune chiné | giallo screziato

STM68119
hellgrün meliert | bright green mottled | vert clair chiné | verde chiaro screziato

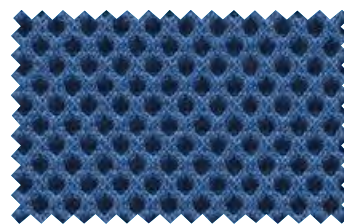
STG62057
gelb | yellow | jaune | giallo



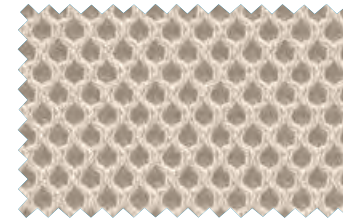
RN61129 (RU30)
dunkelbraun | dark brown | brun foncé | marrone scuro



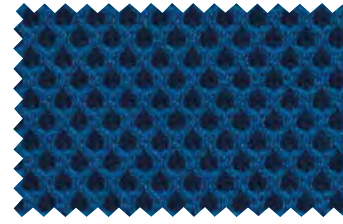
RN68056 (RU34)
grün | green | vert | verde



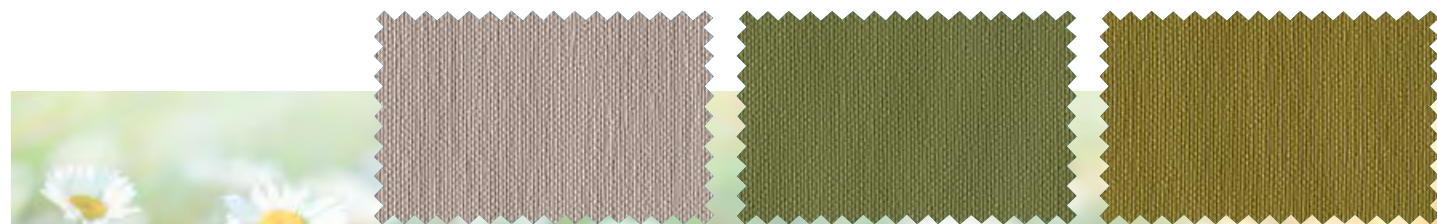
RN66140
blau | blue | bleu | blu



RN61128 (RU01)
natur | ecru | écreu | écru



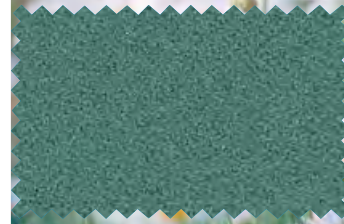
RN66123 (RU82)
dunkelblau | dark blue | bleu foncé | blu scuro



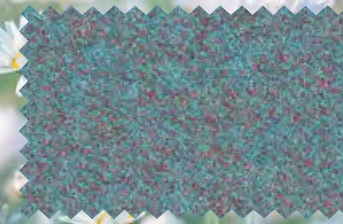
SX0001
beige | beige | beige | beige

SX5020
olivgrün | olive green | vert olive | verde oliva

SX5008
grün | green | vert | verde



LDS49
mittelgrün | medium green | vert moyen | verde medio



LDS56
mint meliert | mint mottled | menthe chiné | menta screziato



FL68056 (FL34)
hellgrün | bright green | vert clair | verde chiaro

FL66062 (FL80)
blau | blue | bleu | blu



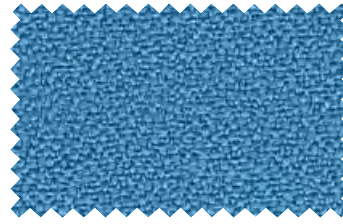
LS307 (LS50)
cognac | cognac | cognac | cognac



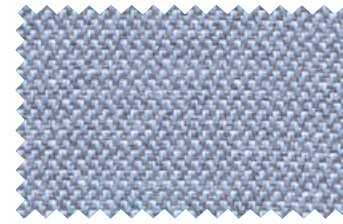
LS390 (LS02)
weiss | white | blanc | bianco



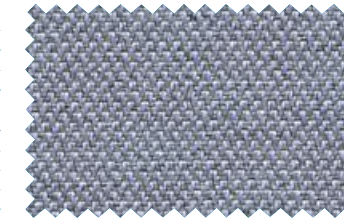
LS620
olivgrün | olive green | vert olive | verde oliva



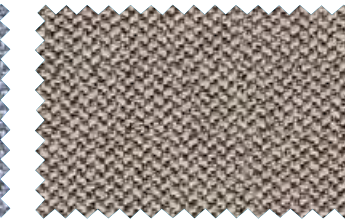
XR073
himmelblau | sky blue | bleu ciel | azzurro cielo



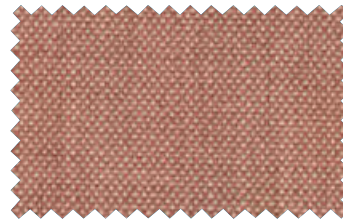
CSE39
hellblau | bright blue | bleu clair | celeste



CSE43
blaugrau | blue-gray | bleu-gris | blue grigio



CSE02
hellbraun | bright brown | brun clair | marrone chiaro



RX612
rosa | pink | rose | rosa



CSE33
weissgrün | white green | blanc vert | bianco verde



CSE34
indigo | indigo | indigo | indigo



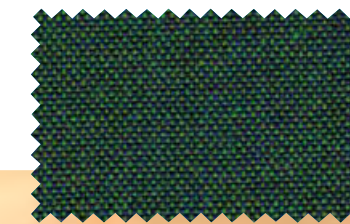
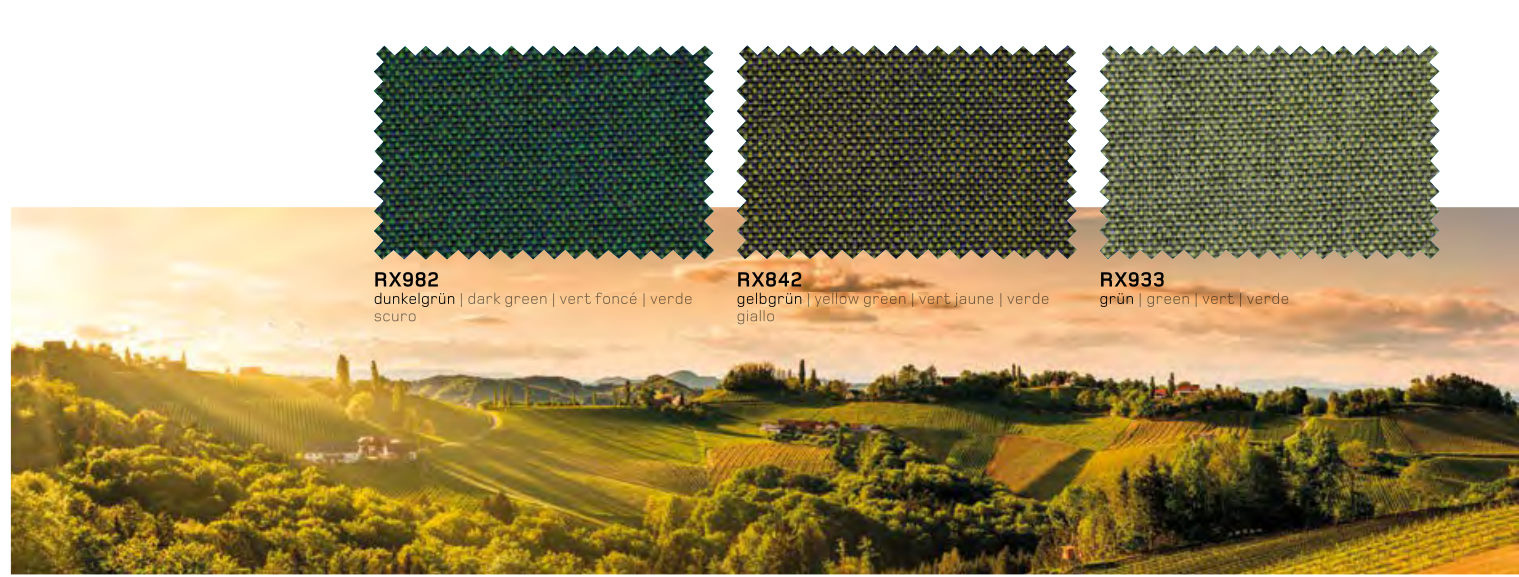
RX242
hellbraun | light brown | brun clair | marrone chiaro



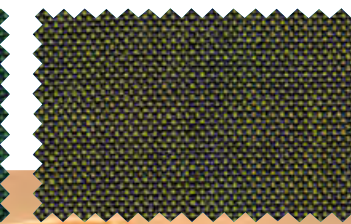
RX362
dunkelbraun | dark brown | brun foncé | marrone scuro



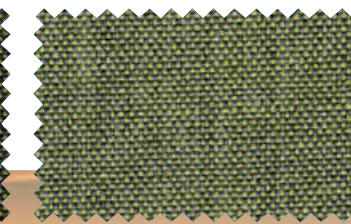
RX452
orange | orange | orange | orange



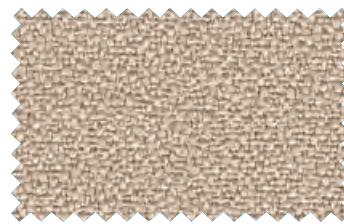
RX982
dunkelgrün | dark green | vert foncé | verde scuro



RX842
gelbgrün | yellow green | vert jaune | verde giallo



RX933
grün | green | vert | verde



XR108
beige | beige | beige | beige



VL7001
violett | violet | violet | viola



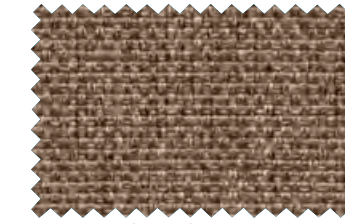
VL1048
beige | beige | beige | beige



VL0034
hellbraun | bright brown | brun clair | marrone chiaro



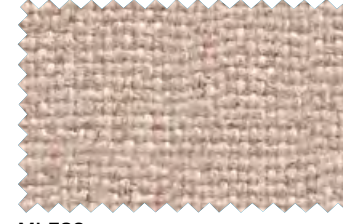
VL4041
braun | brown | brun | marrone



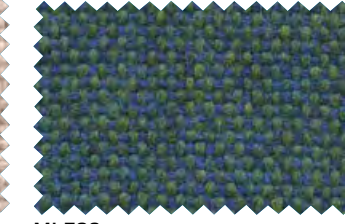
ME61003 (ME24)
hellbraun | bright brown | brun clair | marrone chiaro



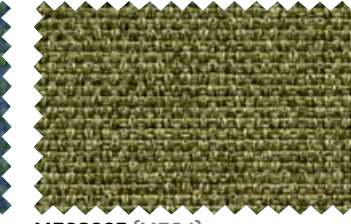
MLF17
gelb | yellow | jaune | giallo



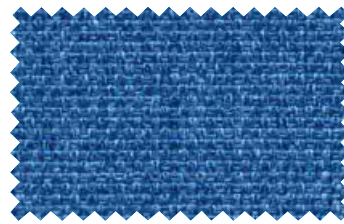
MLF20
beige | beige | beige | beige



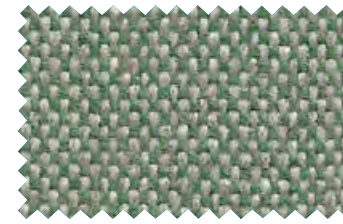
MLF32
grün | green | vert | verde



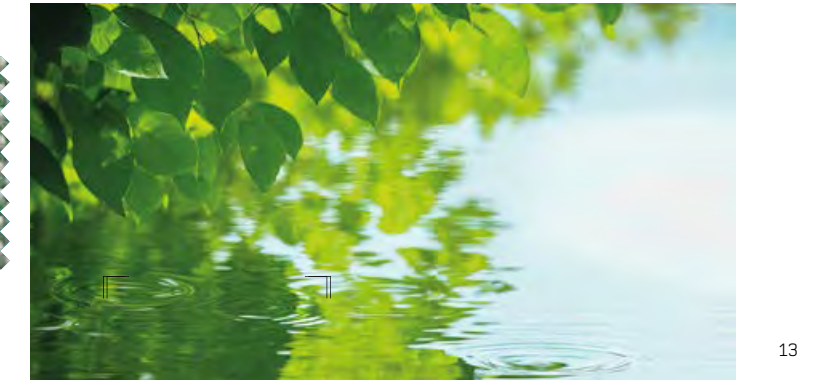
ME68005 (ME34)
hellgrün | bright green | vert clair | verde chiaro



ME66009 (ME80)
blau | blue | bleu | blu



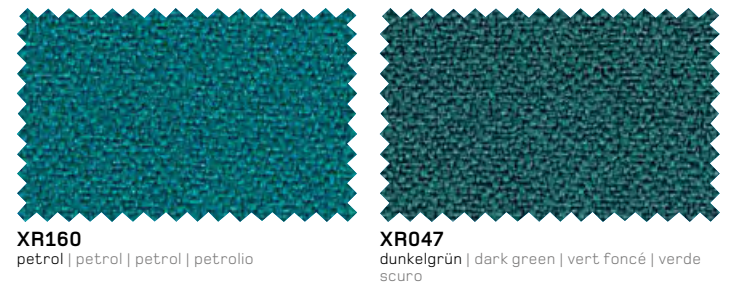
MLF09
hellgrün | bright green | vert clair | verde chiaro



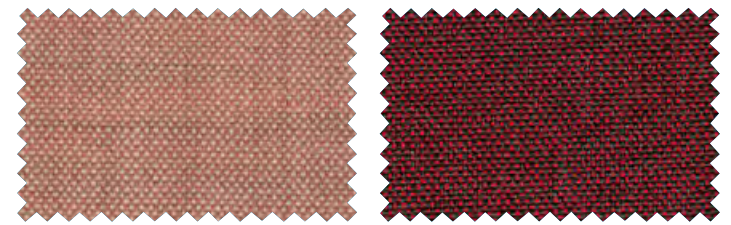
RETRO REVIVAL

Kräftiges Orange, samtiges Lila und sattes Petrol kreieren ein junges und modernes Farbspiel, lässt aber auch Reminiszenzen an die 70er Jahre anklingen. Die aufregenden Kontraste werden durch sanfte Strukturen in Blaugrün oder Hellgrau ausgeglichen.

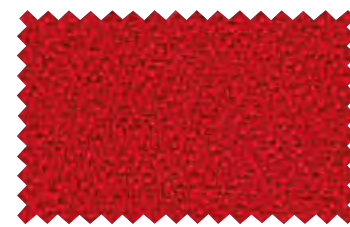
RETRO REVIVAL



XR160 petrol | petrol | petrol | petrolio
XR047 dunkelgrün | dark green | vert foncé | verde scuro



RX612 rosa | pink | rose | rosa
RX662 rost | rust | rouille | ruggine

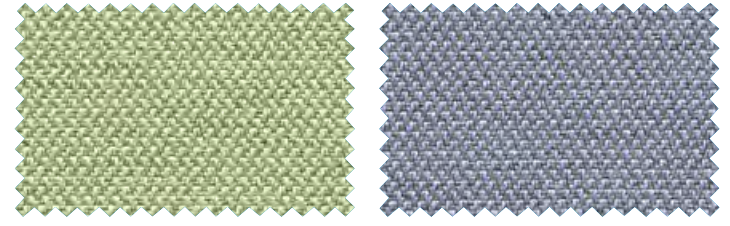


XR079 rot | red | rouge | rosso

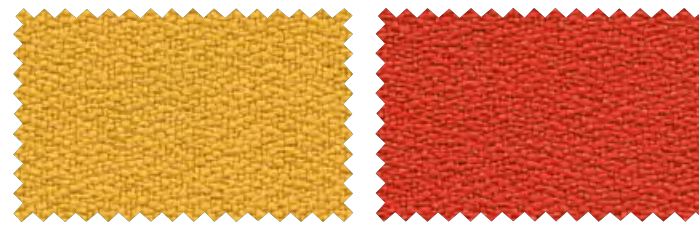
| E | VIVID ORANGE, VELVETY MAUVE AND RICH PETROL – together, they create a fresh and modern play of colours. But they also call up memories of the 1970s. The exciting contrasts are harmonized by gentle structures in blue-green and light-grey colours.

| F | L'ORANGE VIF, LE MAUVE VELOURÉ ET LE PÉTROLE FONCÉ créent un jeu de couleurs jeune et moderne, mais ravivent aussi les souvenirs des années 70. Les contrastes saisissants trouvent leur harmonie dans les structures pâles aux couleurs bleu-vert ou gris clair.

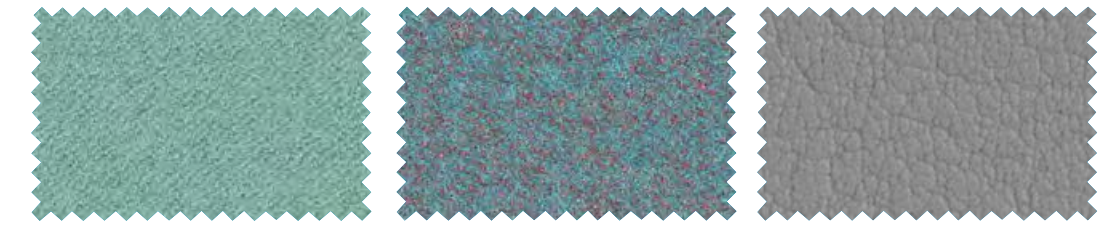
| I | UN ARANCIONE INTENSO, UN LILLÀ VELLUTATO E UN FORTE NERO PETROLIO creano un gioco di colori giovanile e moderno ma fanno anche rivivere ricordi degli anni Settanta. Questi accattivanti contrasti vengono compensati da strutture morbide in blu-verde o grigio chiaro.



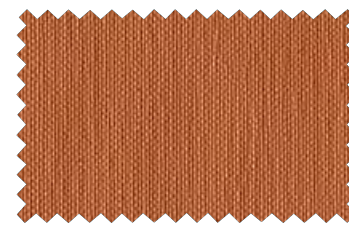
CSE34 lindgrün | lime green | vert lime | verde lime
CSE43 blaugrau | blue-gray | bleu-gris | blue grigio



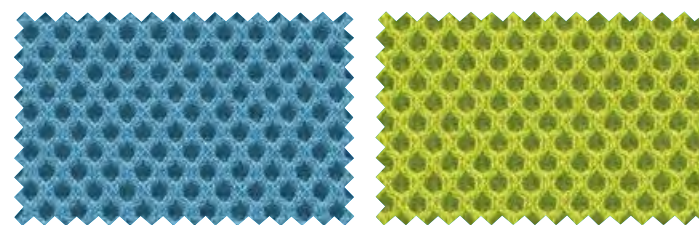
XR072 (EX52) gelb | yellow | jaune | giallo
XR076 (EX54) hellorange | light orange | orange clair | arancione chiaro



LDS54 opal | opal | opale | opale
LDS56 mint meliert | mint mottled | menthe chiné | menta screziata
VL4045 hellgrau | light grey | gris clair | grigio chiaro



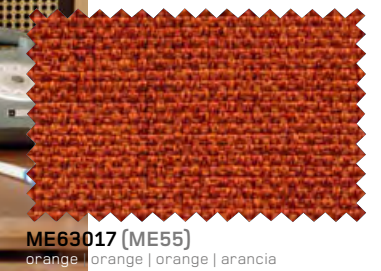
SX0013 orange | orange | orange | arancia



RN66063 (RU38) türkis | turquoise | bleu vert | turchese
RN68056 (RU34) grün | green | vert | verde



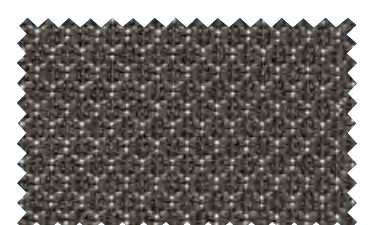
RN63034 (RU55) orange | orange | orange | arancio



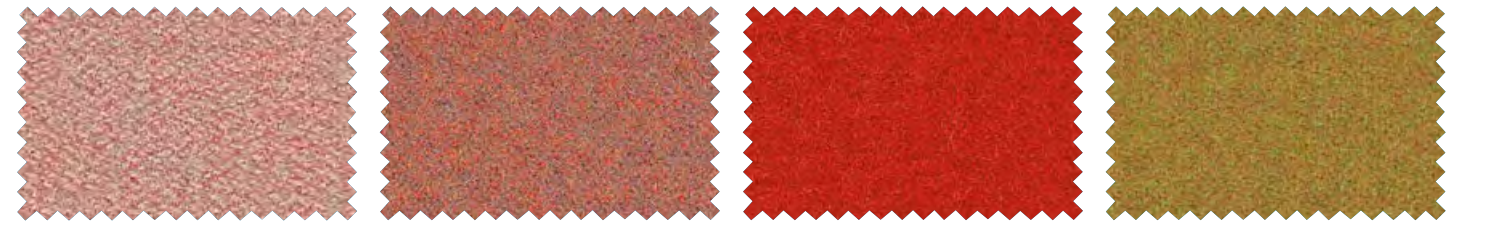
ME63017 (ME55) orange | orange | orange | arancia



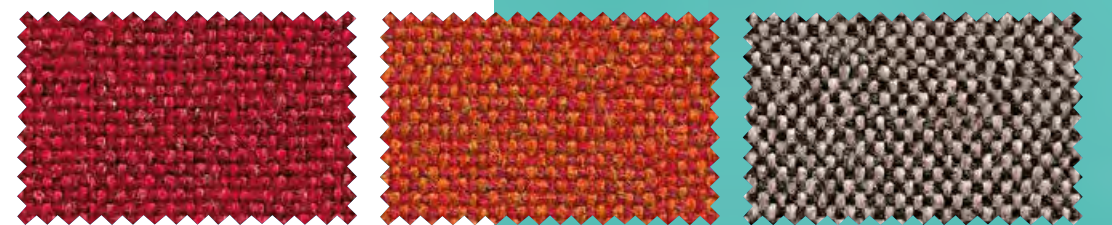
FL68056 (FL34) hellgrün | bright green | vert clair | verde chiaro
FL63035 (FL55) orange | orange | orange | arancia
FL64089 (FL60) rot | red | rouge | rosso



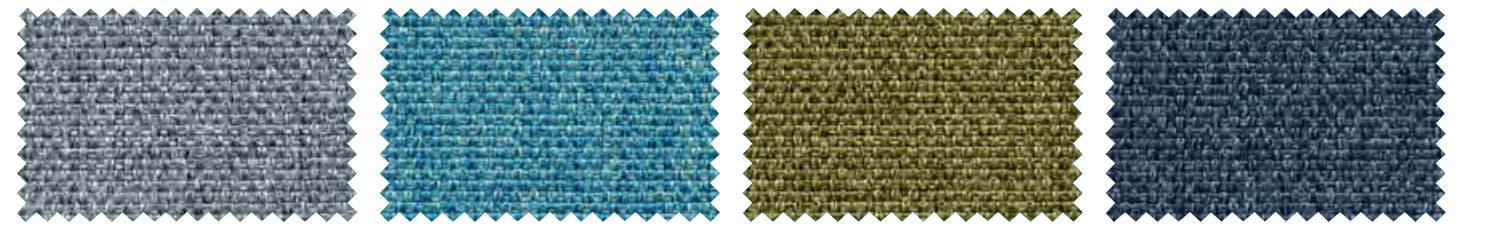
ST931 (ST70) hellgrau | bright grey | gris clair | grigio chiaro



LDS74 rosa meliert | pink mottled | rose chiné | rosa screziato
LDS73 rost meliert | rust mottled | rouille chiné | ruggine screziato
LDS84 rot | red | rouge | rosso
LDS43 senf meliert | mustard mottled | moutarde chiné | senape screziato



MLF01 rot | red | rouge | rosso
MLF13 orange | orange | orange | arancia
MLF63 beige grau | beige grey | beige gris | beige grigio



ME66008 (ME70) hellgrau | light grey | gris clair | grigio chiaro
ME67006 (ME38) türkis | turquoise | bleu vert | turchese
ME68005 (ME34) hellgrün | bright green | vert clair | verde chiaro
ME66010 (ME84) nachtblau | night blue | bleu nuit | blu notte



THE NEUTRALS

Gedämpftes Blau und dunkle Grautöne erschaffen Harmonie, die von der Ähnlichkeit lebt. Feine Nuancen von Weiss bis Schwarz werden kombiniert mit Dunkelblau. Es entsteht eine unaufdringlich geschmackvolle Atmosphäre.

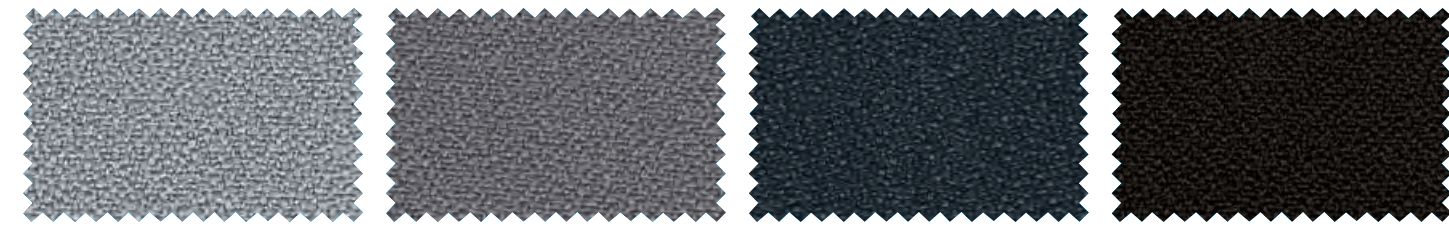
| E | COMBINED MUTED BLUE AND DARK GREY SHADES create a harmony that arises from their similarity. Fine nuances ranging from white to black are likewise combined with dark blue. The result: an unobtrusive, aesthetic atmosphere.

| F | LE BLEU MAT ET LES TEINTES DE GRIS foncé créent une harmonie inspirée de la similitude. Les nuances délicates du blanc au noir sont mariées au bleu foncé donnant ainsi naissance à une ambiance discrète de style.

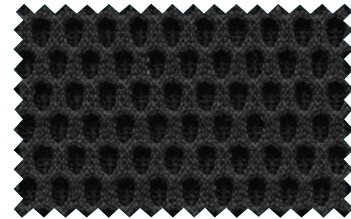
| I | UN BLU TENUE E TONALITÀ DI GRIGIO SCURO creano un'armonia che si definisce per somiglianza. Leggere sfumature dal bianco al nero vengono abbinate a un blu scuro contribuendo a creare un'atmosfera elegantemente non invadente.



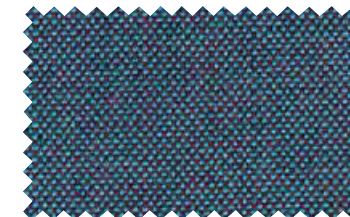
THE NEUTRALS



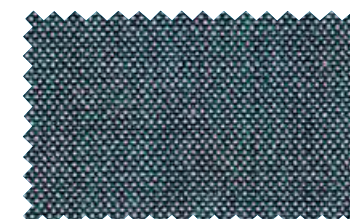
XR094 hellgrau | light grey | gris clair | grigio chiaro
XR081 (EX75) grau | grey | gris | grigio
XR145 (EX77) anthrazit | anthracite | anthracite | anthracite
XR009 (EX85) schwarz | black | noir | nero



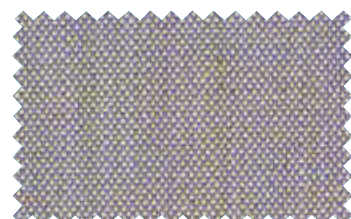
OM60999 (OM85) schwarz | black | noir | nero



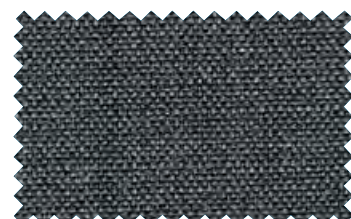
RX743 blau | blue | bleu | blu



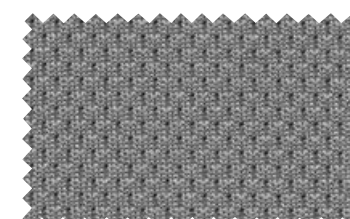
RX716 blaugrau | blue-grey | bleu-gris | blue grigio



RX606 hellgrau | light grey | gris clair | grigio chiaro



RX163 dunkelgrau | dark grey | gris foncé | grigio scuro



FL60011 (FL70) hellgrau | light grey | gris clair | grigio chiaro



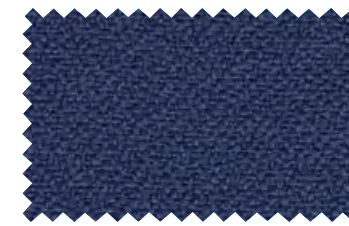
FL60025 (FL75) dunkelgrau | dark grey | gris foncé | grigio scuro



FL66065 (FL82) dunkelblau | dark blue | bleu foncé | blu scuro



FL60999 (FL85) schwarz | black | noir | nero



XR026 (EX83) dunkelblau | dark blue | bleu foncé | blu scuro



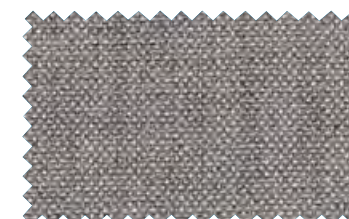
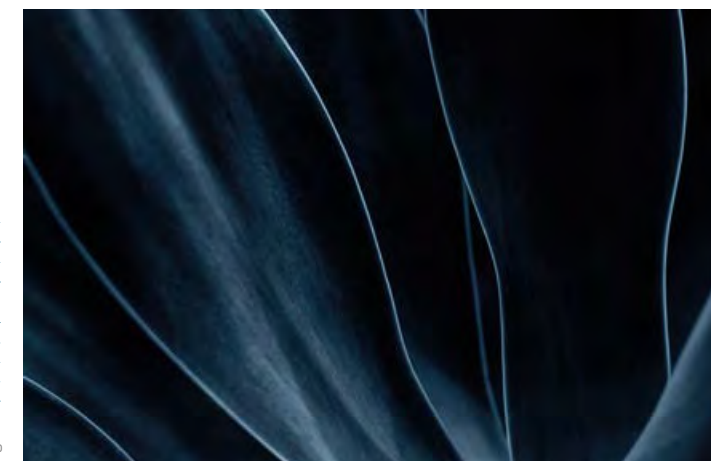
SX0001 beige | beige | beige | beige



SX3007 nachtblau | night blue | bleu nuit | blu notte



SX4002 dunkelgrau | dark grey | gris foncé | grigio scuro



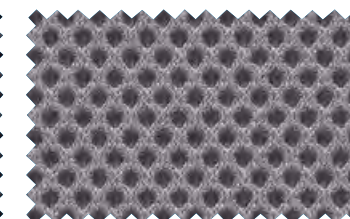
RX123 mausgrau | mouse grey | gris souris | grigio topo



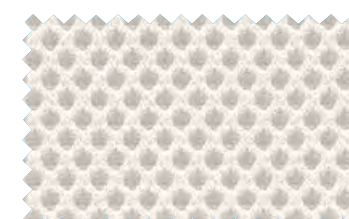
RX196 schwarz | black | noir | nero



RN60025 (RU77) dunkelgrau | dark grey | gris foncé | grigio scuro



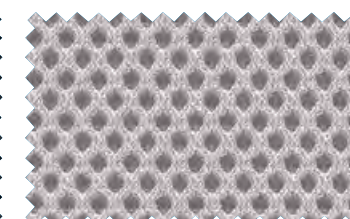
RN60011 (RU75) grau | grey | gris | grigio



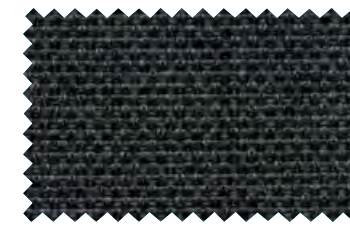
RN60061 (RU02) weiss | white | blanc | bianco



RN60999 (RU85) schwarz | black | noir | nero



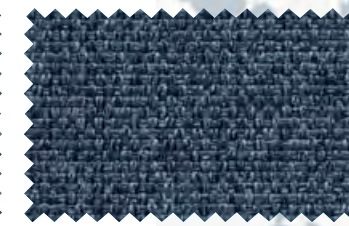
RN60165 (RU70) hellgrau | light grey | gris clair | grigio chiaro



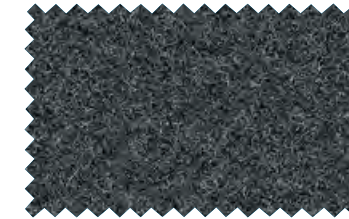
ME60999 (ME85) schwarz | black | noir | nero



ME60004 (ME77) dunkelgrau | dark grey | gris foncé | grigio scuro



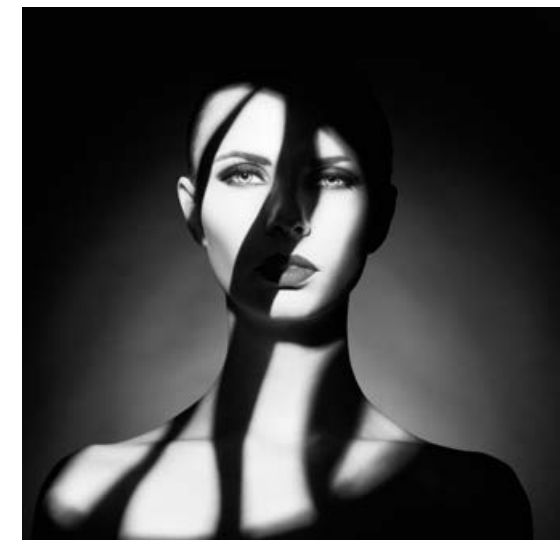
ME66010 (ME84) nachtblau | night blue | bleu nuit | blu notte



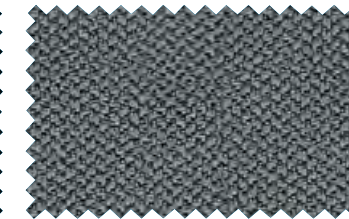
LDS17 anthrazit meliert | anthracite mottled | anthracite chiné | anthracite screziato



LDS60 blau meliert | blue mottled | bleu chiné | blu screziato



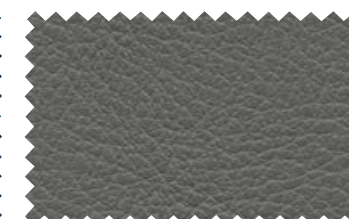
CSE14 schwarz | black | noir | nero



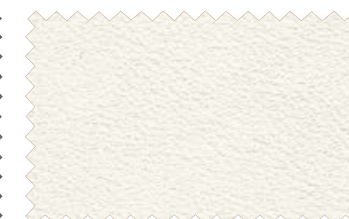
CSE13 grau | grey | gris | grigio



LS350 (LS82) marine | navy blue | bleu marine | blu marino



LS358 steingrau | stone grey | gris pierre | grigio pietra



LS390 (LS02) weiss | white | blanc | bianco



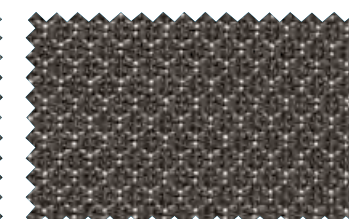
LS301 (LS85) schwarz | black | noir | nero



ST993 (ST77) dunkelgrau | dark grey | gris foncé | grigio scuro



ST931 (ST70) hellgrau | bright grey | gris clair | grigio chiaro



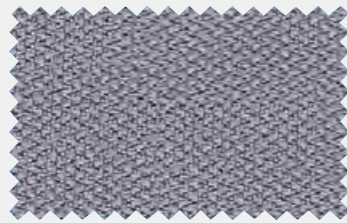
ST931 (ST70) hellgrau | bright grey | gris clair | grigio chiaro

ERA

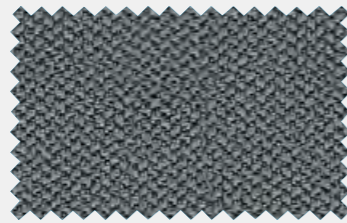
|D| 100% Polyester |E| 100% Polyester |F| 100% Polyeste |I| 100% Poliestere



CSE02
hellbraun | bright brown | brun clair | marrone chiaro



CSE11
hellgrau | light grey | gris clair | grigio chiaro



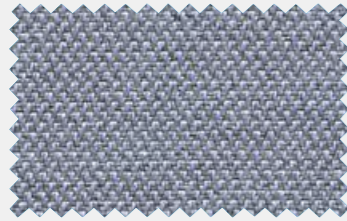
CSE13
grau | grey | gris | grigio



CSE14
schwarz | black | noir | nero



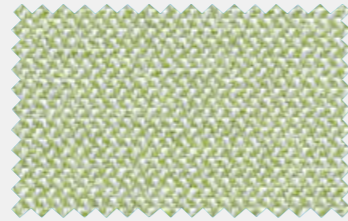
CSE39
hellblau | bright blue | bleu clair | celeste



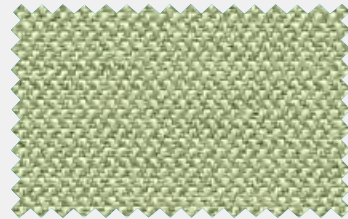
CSE43
blaugrau | blue-grey | bleu-gris | blue grigio



CSE42
blau | blue | bleu | blu



CSE33
weissgrün | white-green | blanc-vert | bianco-verde



CSE34
lindgrün | lime green | vert lime | verde lime



CSE35
dunkelgrün | dark green | vert foncé | verde scuro



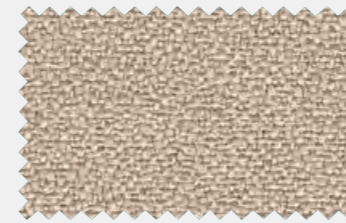
CSE29
rost | rust | rouille | ruggine



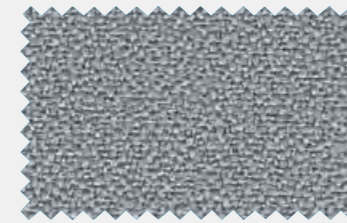
CSE28
rot | red | rouge | rosso

XTREME

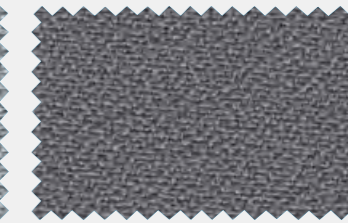
|D| 100% Trevira CS |E| 100% Trevira CS |F| 100% Trevira CS |I| 100% Trevira CS



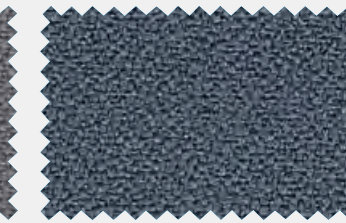
XR108
beige | beige | beige | beige



XR094
hellgrau | light grey | gris clair | grigio chiaro



XR081 (EX75)
grau | grey | gris | grigio



XR171
dunkelgrau | dark grey | gris foncé | grigio scuro



XR046
dunkelbraun | dark brown | brun foncé | marrone scuro



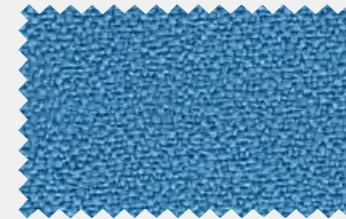
XR145 (EX77)
anthrazit | anthracite | anthracite | anthracite



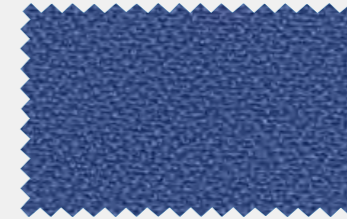
XR009 (EX85)
schwarz | black | noir | nero



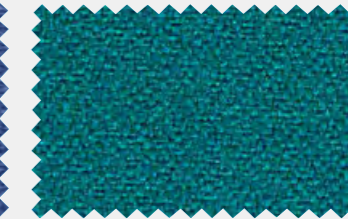
XR026 (EX83)
dunkelblau | dark blue | bleu foncé | blu scuro



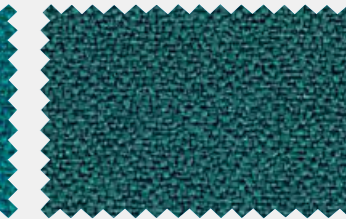
XR073
himmelblau | sky blue | bleu ciel | azzurro cielo



XR005 (EX80)
blau | blue | bleu | blu



XR160
petrol | petrol | petrol | petrolio



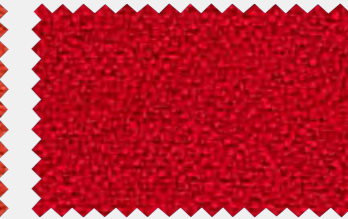
XR047
dunkelgrün | dark green | vert foncé | verde scuro



XR072 (EX52)
gelb | yellow | jaune | giallo



XR076 (EX54)
hellorange | light orange | orange clair | arancione chiaro



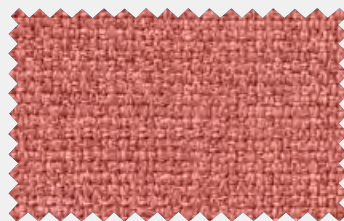
XR079
rot | red | rouge | rosso



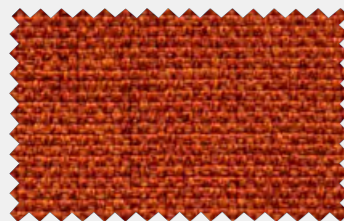
XR136
bordeaux | bordeaux | bordeaux | bordeaux

MEDLEY™

|D| 100% Polyester |E| 100% Polyester |F| 100% Polyeste |I| 100% Poliestere



ME63064
rosa | pink
rose | rosa



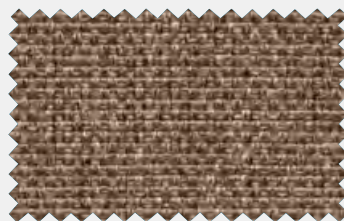
ME63017 (ME55)
orange | orange | orange | arancia



ME64123
dunkelrot | dark red | rouge foncé | rosso scuro



ME61004 (ME30)
dunkelbraun | dark brown | brun foncé | marrone scuro



ME61003 (ME24)
hellbraun | bright brown | brun clair | marrone chiaro



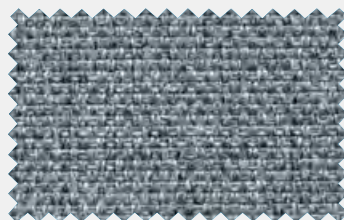
ME68005 (ME34)
hellgrün | bright green | vert clair | verde chiaro



ME60999 (ME85)
schwarz | black | noir | nero



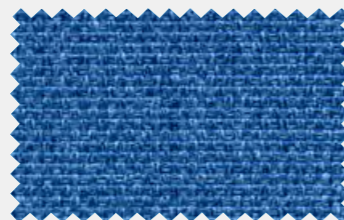
ME60004 (ME77)
dunkelgrau | dark grey | gris foncé | grigio scuro



ME66008 (ME70)
hellgrau | light grey | gris clair | grigio chiaro



ME67006 (ME38)
türkis | turquoise | bleu vert | turchese



ME66009 (ME80)
blau | blue | bleu | blu



ME66010 (ME84)
nachtblau | night blue | bleu nuit | blu notte

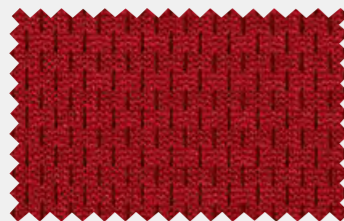


FLEX

|D| 100% Polyester |E| 100% Polyester |F| 100% Polyester |I| 100% Poliestere



FL63035 (FL55)
orange | orange | orange | arancia



FL64089 (FL60)
rot | red | rouge | rosso



FL64094
bordeaux | bordeaux | bordeaux | bordeaux



FL66062 (FL80)
blau | blue | bleu | blu



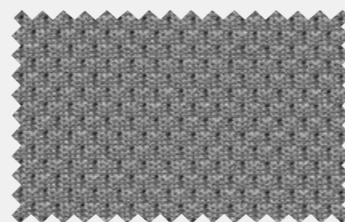
FL66065 (FL82)
dunkelblau | dark blue | bleu foncé | blu scuro



FL60999 (FL85)
schwarz | black | noir | nero



FL60025 (FL75)
dunkelgrau | dark grey | gris foncé | grigio scuro



FL60011 (FL70)
hellgrau | light grey | gris clair | grigio chiaro



FL68057
grün | green | vert | verde



FL68056 (FL34)
hellgrün | bright green | vert clair | verde chiaro

VALENCIA

|D| Kunstleder, Deckmaterial 100% Vinyl/Urethan, Träger 100% Hi-Loft Polyester |E| Synthetic leather, surface 100% vinyl/urethane, support 100% Hi-Loft polyester |F| Simili cuir, surface 100% vinyl/uréthane, support 100% Hi-Loft Polyester |I| Similipelle, 89% vinile/uretano, supporto 100% Hi-Loft poliestere



VL2001
bordeaux | bordeaux | bordeaux | bordeaux



VL2074
dunkelrot | dark red | rouge foncé | rosso scuro



VL6003
kupfer | copper | cuivré | rame



VL6012
gelb | yellow | jaune | giallo



VL1048
beige | beige | beige | beige



VL0034
hellbraun | bright brown | brun clair | marrone chiaro



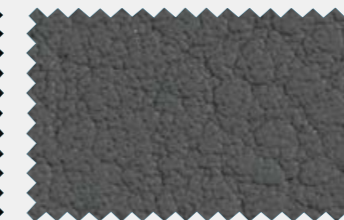
VL4041
braun | brown | brun | marrone



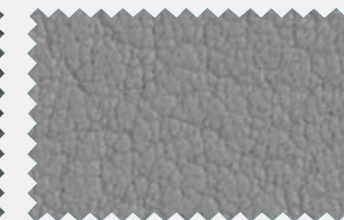
VL0020
dunkelbraun | dark brown | brun foncé | marrone scuro



VL9035
schwarz | black | noir | nero



VL4003
anthrazit | anthracite | anthracite | anthracite



VL4045
hellgrau | light grey | gris clair | grigio chiaro



VL4043
grau | grey | gris | grigio



VL3069
blau | blue | bleu | blu



VL3067
dunkelblau | dark blue | bleu foncé | blu scuro



VL7001
violett | violet | violet | viola



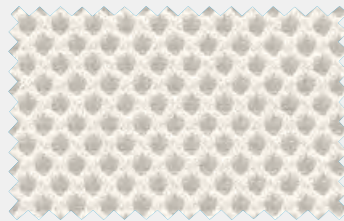
VL5001
grün | green
vert | verde



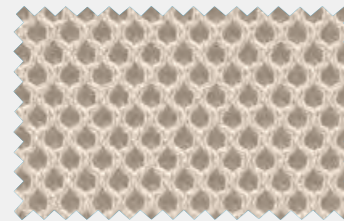
VL5069
dunkelgrün | dark green | vert foncé | verde scuro

RUNNER™

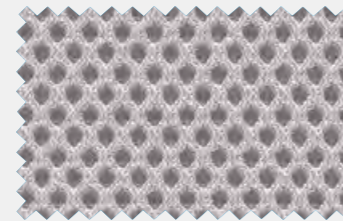
|D| 100% Polyester |E| 100% Polyester |F| 100% Polyeste |I| 100 % Poliestere



RN60061 (RU02)
weiss | white | blanc | bianco



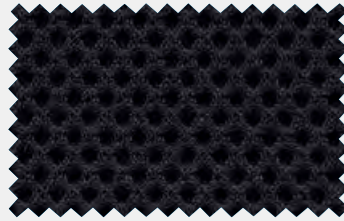
RN61128 (RU01)
natur | ecru | écreu | écru



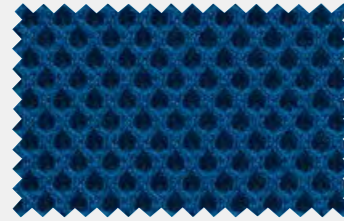
RN60165 (RU70)
hellgrau | light grey | gris clair | grigio chiaro



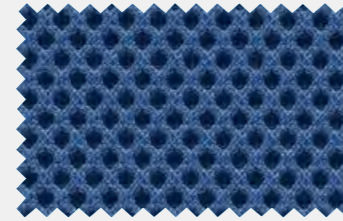
RN60025 (RU77)
dunkelgrau | dark grey | gris foncé | grigio scuro



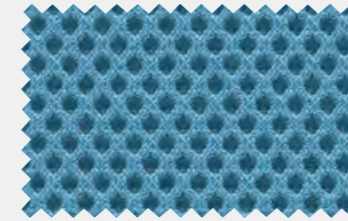
RN60999 (RU85)
schwarz | black | noir | nero



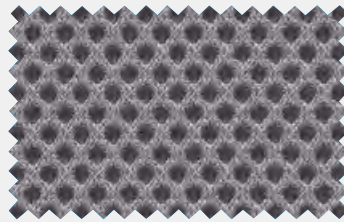
RN66123 (RU82)
dunkelblau | dark blue | bleu foncé | blu scuro



RN66140
blau | blue | bleu | blu



RN66063 (RU38)
türkis | turquoise | bleu vert | turchese



RN60011 (RU75)
grau | grey | gris | grigio



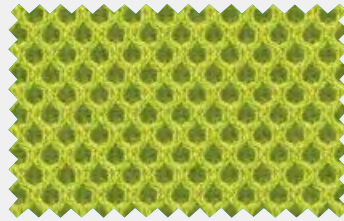
RN61129 (RU30)
dunkelbraun | dark brown | brun foncé | marrone scuro



RN64089 (RU60)
rot | red | rouge | rosso



RN63034 (RU55)
orange | orange | orange | arancio

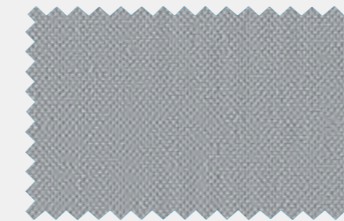


RN68056 (RU34)
grün | green | vert | verde



SILVERTEX

|D| Kunstleder, Deckmaterial 100% Vinyl/Urethan, Träger 100% Hi-Loft Polyester |E| Synthetic leather, surface 100% vinyl/urethane, support 100% Hi-Loft polyester |F| Simili cuir, surface 100% vinyl/uréthane, support 100% Hi-Loft Polyester |I| Similipelle, 89% vinile/uretano, supporto 100 % Hi-Loft poliestere



SX4001
hellgrau | light grey | gris clair | grigio chiaro



SX4002
dunkelgrau | dark grey | gris foncé | grigio scuro



SX3007
nachtblau | night blue | bleu nuit | blu notte



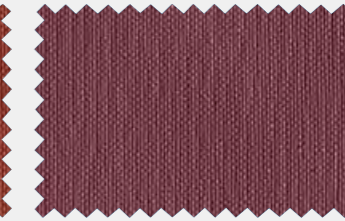
SX3066
blau | blue | bleu | blu



SX0013
orange | orange | orange | arancia



SX2012
rot | red | rouge | rosso



SX2016
bordeaux | bordeaux | bordeaux | bordeaux



SX4024
braun | brown | brun | bruno



SX5020
olivgrün | olive green | vert olive | verde oliva



SX5008
grün | green | vert | verde



SX0009
hellbraun | bright brown | brun clair | bruno chiaro



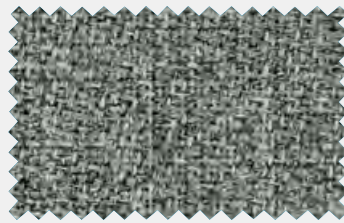
SX0001
beige | beige | beige | beige



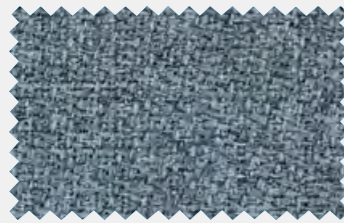
SX9001
schwarz | black | noir | nero

STEP / STEP MELIERT

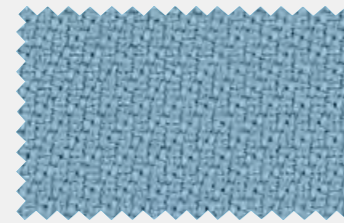
|D| 100 % Trevira CS |E| 100 % Trevira CS |F| 100 % Trevira CS |I| 100 % Trevira CS



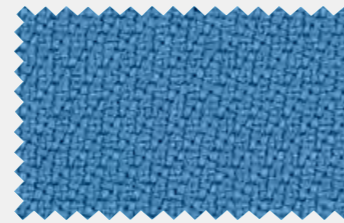
STM60004
grau meliert | grey mottled | gris chiné | grigio screziato



STM67004
mint meliert | mint mottled | menthe chiné | menta screziato



STG67004
mint | mint | menthe | menta



STG66018
hellblau | bright blue | bleu clair | celeste



STG65011
nachtblau | night blue | bleu nuit | blu notte



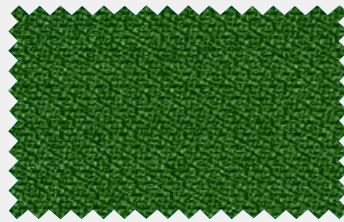
STG60999
schwarz | black | noir | nero



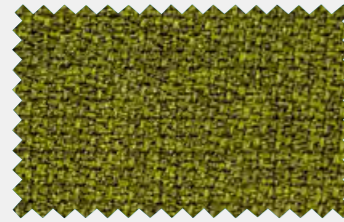
STM61103
braun meliert | brown mottled | brun chiné | bruno screziato



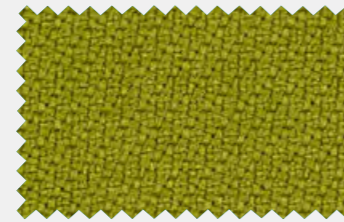
STM61104
beige meliert | beige mottled | beige chiné | beige screziato



STG68120
grün | green | vert | verde



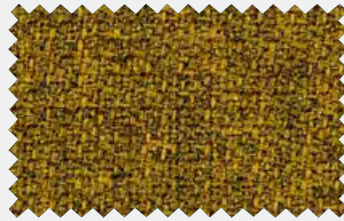
STM68119
hellgrün meliert | bright green mottled | vert clair chiné | verde chiaro screziato



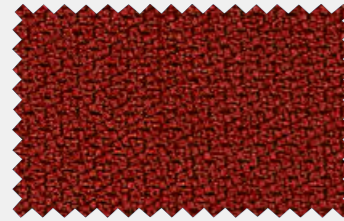
STG68119
hellgrün | bright green | vert clair | verde chiaro



STG62057
gelb | yellow | jaune | giallo



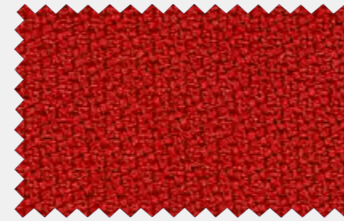
STM62057
gelb meliert | yellow mottled | jaune chiné | giallo screziato



STG63075
rost | rust | rouille | ruggine



STM63075
rost meliert | rust mottled | rouille chiné | ruggine screziato



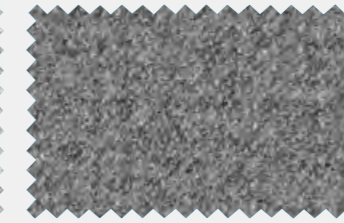
STG63012
rot | red | rouge | rosso

SYNERGY

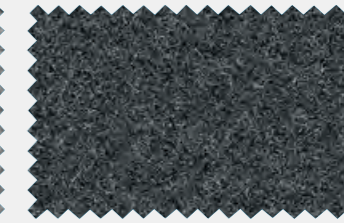
|D| 95% Schurwolle, 5% Polyamid |E| 95% Virgin Wool, 5% Polyamide |F| 95% Laine Vierge, 5% Polyamide |I| 95% Lana vergine, 5% Poliammide



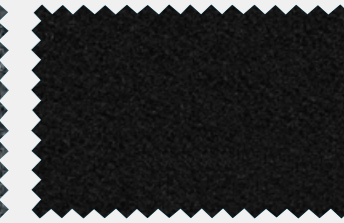
LDS08
hellgrau meliert | light grey mottled | gris clair chiné | grigio chiaro screziato



LDS16
grau meliert | grey mottled | gris chiné | grigio screziato



LDS17
anthrazit meliert | anthracite mottled | anthracite chiné | antracite screziato



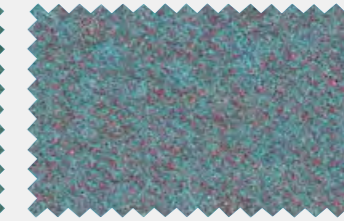
LDS27
schwarz | black | noir | nero



LDS60
blau meliert | blue mottled | bleu chiné | blu screziato



LDS49
mittelgrün | medium green | vert moyen | verde medio



LDS56
mint meliert | mint mottled | menthe chiné | menta screziato



LDS54
opal | opal | opale | opale



LDS33
sand meliert | sand mottled | sable chiné | sabbia screziato



LDS37
braun meliert | brown mottled | brun chiné | bruno screziato



LDS43
senf meliert | mustard mottled | moutarde chiné | senape screziato



LDS39
dunkelbraun meliert | dark brown mottled | brun foncé chiné | marrone scuro screziato



LDS32
hellbraun meliert | bright brown mottled | brun clair chiné | marrone chiaro screziato



LDS74
rosa meliert | pink mottled | rose chiné | rosa screziato



LDS76
orange meliert | orange mottled | orange chiné | arancio screziato



LDS73
rost meliert | rust mottled | rouille chiné | ruggine screziato



LDS84
rot | red | rouge | rosso



LDS79
bordeaux | bordeaux | bordeaux | bordeaux



LDS88
dunkelrot | dark red | rouge foncé | rosso scuro

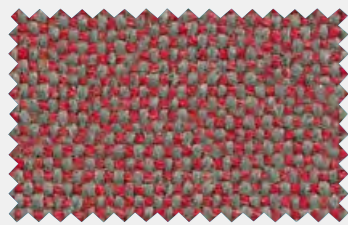


INDOOR ADVANTAGE GOLD FURNITURE

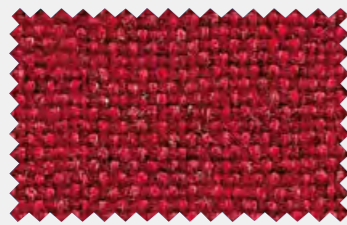
EU Ecolabel : UK/16/005

MAIN LINE FLAX

|D| 75% Schurwolle, 25% Flachs |E| 100% 90% New Wool, 10% Nylon |F| 100% 90% Laine nouvelle, 10% Nylon
 |I| 100% 90% lana vergine, 10% nylon



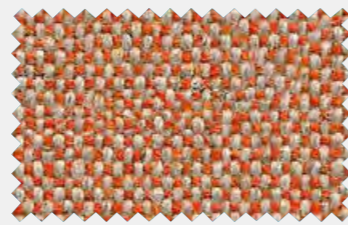
MLF03
rot grau | red grey | rouge gris | rosso grigio



MLF01
rot | red | rouge | rosso



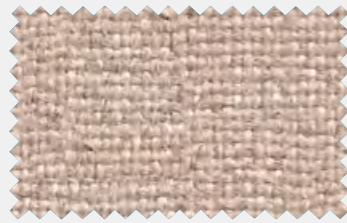
MLF13
orange | orange | orange | arancia



MLF08
hellorange | light orange | orange clair | arancione chiaro



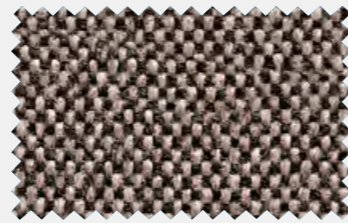
MLF17
gelb | yellow | jaune | giallo



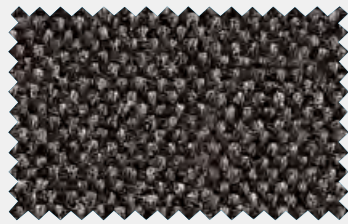
MLF20
beige | beige | beige | beige



MLF23
braun | brown | brun | marrone



MLF63
beige grau | beige grey | beige gris | beige grigio



MLF16
dunkelgrau | dark grey | gris foncé | grigio scuro



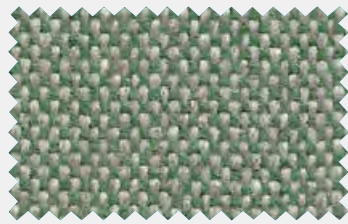
MLF28
schwarz | black | noir | nero



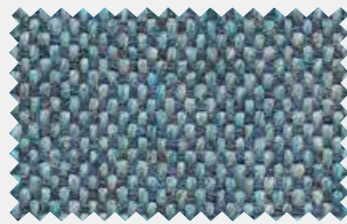
MLF36
nachtblau | night blue | bleu nuit | blu notte



MLF32
grün | green | vert | verde



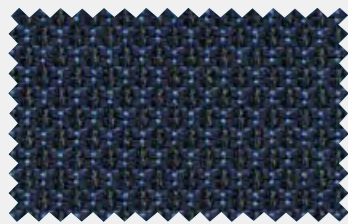
MLF09
hellgrün | bright green | vert clair | verde chiaro



MLF22
hellblau | bright blue | bleu clair | celeste

STRONG

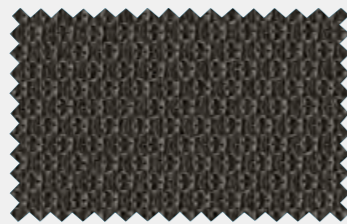
|D| 62% Gradura, 14% zertifizierte Farmwolle, 10% Red. Lenzing FWM, 11% PES 3% MTF |E| 62% Gradura, 14% certified wgm wool, 10% red. Lenzing FWM, 11% PES 3% MTF |F| 62% Gradura, 14% zertifizierte Farmwolle, 10% Red. Lenzing FWM, 11% PES 3% MTF |I| 62% Gradura, 14% lana vergine certificato, 10% Red. Lenzing FWM, 11% PES 3% MTF



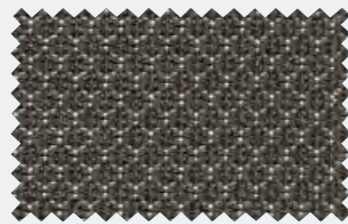
ST586 (ST80)
blau | blue | bleu | blu



ST999 (ST85)
schwarz | black | noir | nero



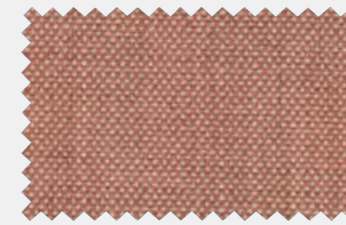
ST993 (ST77)
dunkelgrau | dark grey | gris foncé | grigio scuro



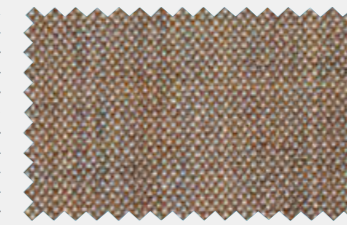
ST931 (ST70)
hellgrau | bright grey | gris clair | grigio chiaro

REMIX 3

|D| 90% Schurwolle, 10% Nylon |E| 100% 90% New Wool, 10% Nylon |F| 100% 90% Laine nouvelle, 10% Nylon
 |I| 100% 90% lana vergine, 10% nylon



RX612
rosa | pink | rose | rosa



RX242
hellbraun | bright brown | brun clair | marrone chiaro



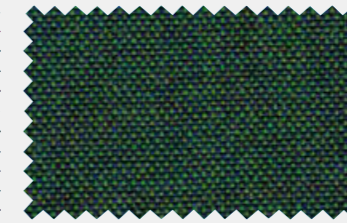
RX362
dunkelbraun | dark brown | brun foncé | marrone scuro



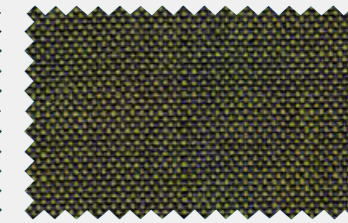
RX452
orange | orange | orange | arancio



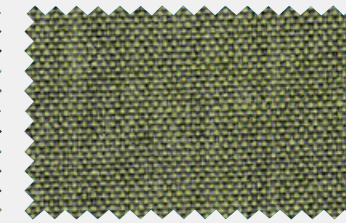
RX662
rost | rust | rouille | ruggine



RX982
dunkelgrün | dark green | vert foncé | verde scuro



RX842
gelbgrün | yellow green | vert jaune | verde giallo



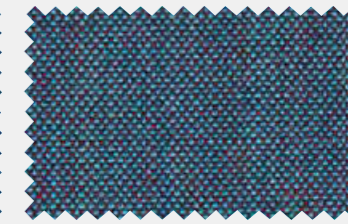
RX933
grün | green | vert | verde



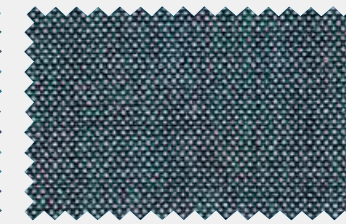
RX873
nachtblau | night blue | bleu nuit | blu notte



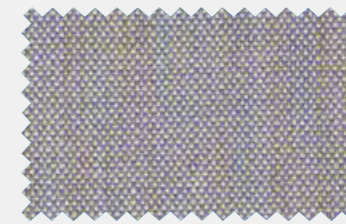
RX866
dunkelblau | dark blue | bleu foncé | blu scuro



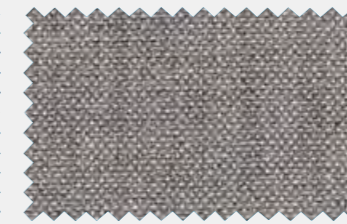
RX743
blau | blue | bleu | blu



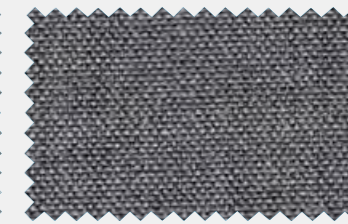
RX716
blaugrau | blue-gray | bleu-gris | blue grigio



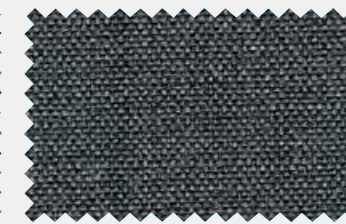
RX606
hellgrau | light grey | gris clair | grigio chiaro



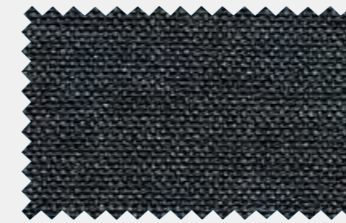
RX123
mausgrau | mouse grey | gris souris | grigio topo



RX143
grau | grey | gris | grigio



RX163
dunkelgrau | dark grey | gris foncé | grigio scuro



RX173
anthrazit | anthracite | anthracite | antracite



RX196
schwarz | black | noir | nero

PREISGRUPPE LEDER

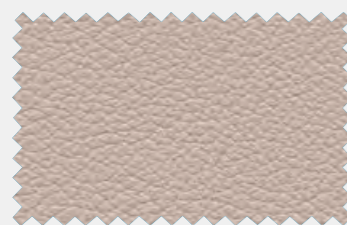
Price category leather / Catégorie de prix cuir / Categoria di prezzo cuoio

SELECT

| D | Feinnarbiges Nappaleder | E | Nappa leather smooth grain structure | F | Cuir nappa avec grain fin et élégant | I | Nappa a grana fine



LS390 (LS02)
weiss | white | blanc | bianco



LS310
kaschmir | cashmere | cachemire | cashmere



LS325 (LS09)
sand | sandy | sable | sabbia



LS307 (LS50)
cognac | cognac | cognac | cognac



LS306 (LS30)
mokka | mocha | moka | mocca



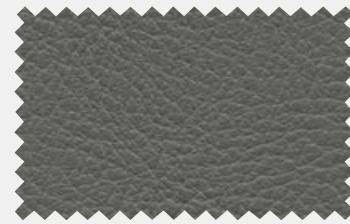
LS350 (LS82)
marine | navy blue | bleu marine | blu marino



LS620
olivgrün | olive green | vert olive | verde oliva



LS339
weinrot | wine red | rouge vin | rosso vino



LS358
steingrau | stone grey | gris pierre | grigio pietra

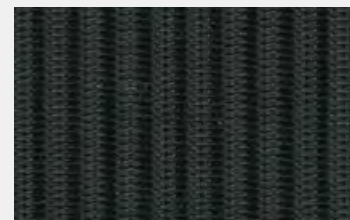


LS301 (LS85)
schwarz | black | noir | nero

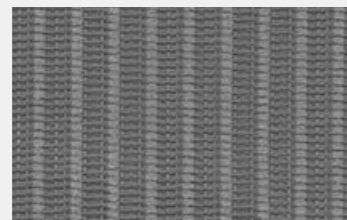
SITAGXILIUM

NETZGEWEBE

| D | 50,9% Polyelastomer, 49,1% PA6 | E | Woven mesh 50,9% Polyelastomer, 49,1% PA6 | F | Mailles 50,9% Polyelastomer, 49,1% PA6 | I | Tessuto a rete 50,9% Polyelastomer, 49,1% PA6



NSW
schwarz | black | noir | nero



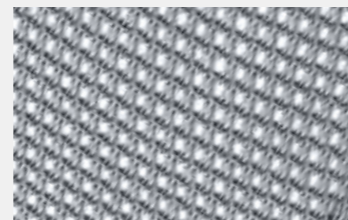
NHG
hellgrau | bright grey | gris clair | grigio chiaro

SITAG EL 100

| D | Netzgewebe 100% Polyamid | E | Woven mesh 100% Polyamid | F | Mailles 100% Polyamide | I | Tessuto a rete 100% poliammide



NSW
schwarz | black | noir | nero



NSI
silber | silver | argent | argento

Surfaces | Finitions | Superficie

OBERFLÄCHEN

synthetic parts | pièces synthétiques | parti in materiale sintetico

KUNSTSTOFF



SW
schwarz | black | noir | nero



GS
graphit-schwarz | graphite | black | noir
graphite | nero grafite



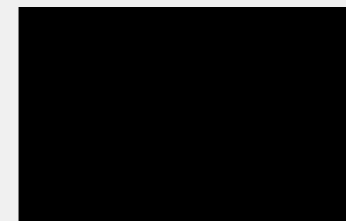
SG
schwarz-grau | black grey | gris noir | grigio
nerastro



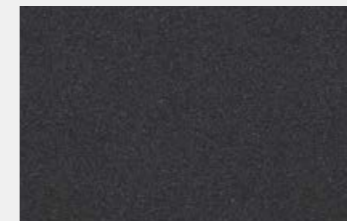
PW
perlweiss | pearl white | blanc perlé | bianco
perla

metal parts | pièces métalliques | parti in materiale sintetico

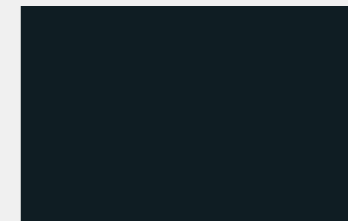
METALL



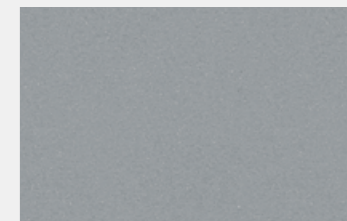
SW
schwarz | black | noir | nero



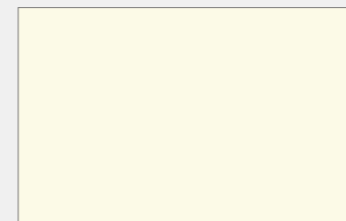
AM anthrazit-metallic | anthracite |
metallic | anthracite métallisé | antracite
metallizzato



SG
schwarzgrau | black grey | gris noir | grigio
nerastro



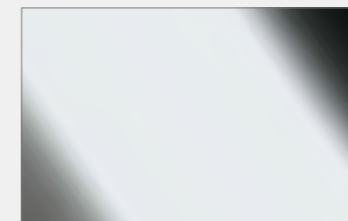
SI
silber | silver | argent | argento



PW
perlweiss | pearl white | blanc perlé | bianco
perla



PO poliert | polished | poli | lucidato
FP poliert | polished | poli | lucidato



CR
verchromt | chrome-plated | chromé | cromato

| D | Alle Oberflächen und Bezüge nur lieferbar entsprechend den jeweils gültigen Preislisten!

| E | All Surfaces and covers are available only in accordance with the respectively valid price lists.

| F | Finitions et coloris livrables exclusivement en fonction des tarifs respectifs en vigueur!

| I | Tutte le finiture e rivestimenti disponibili solo conformemente ai listini prezzi rispettivamente validi!

ELEKTRISCH LEITFÄHIGE BEZÜGE

leitfähig | conductive
conductible | geleidend



ELEKTRISCH ABLEITFÄHIGE ARBEITSSTÜHLE

Unter ESD (ElectroStatic Discharge) versteht man die elektro-statische Entladung aufgeladener Gegenstände oder Personen. Der ESD gerechte Arbeitsstuhl ist ein wesentliches Kriterium für zuverlässige ESD-Schutzmassnahmen am Elektronik-Arbeitsplatz. Für Arbeitsstühle gilt der Ableitwiderstand: $1 \times 10^5 \Omega - 1 \times 10^7 \Omega$ (IEC 61340-5-1).

Der Stuhl ist eine „sekundäre“ ESD Schutzmassnahme und kann eine Erdung über ein Handgelenksband niemals ersetzen.

| E | STATIC-DISSIPATIVE WORK CHAIRS.

Electrostatic discharge (ESD) refers to the dissipation of static electricity from objects or persons that carry a charge of static electricity. The static-dissipative work chair is an essential criterion for reliable ESD protective measures at workplaces involving electronics. The following applies to work chairs for resistance to earth: $1 \times 10^5 \Omega - 1 \times 10^7 \Omega$ (IEC 61340-5-1). **These Chairs are only secondary ESD protective measures and cannot substitute for earthing in the form of a wrist strap.**

| F | CHAISES DE TRAVAIL PROTÉGÉES CONTRE LES DÉCHARGES ÉLECTRIQUES.

Par DES (Décharge ElectroStatique), on entend la décharge électrostatique d'objets ou de personnes porteurs de charges statiques. La chaise de travail protégée contre les décharges électrostatiques est une caractéristique essentielle des mesures préventives contre les DES au poste de travail électronique. La résistance de saignée suivante est applicable pour les chaises de travail: $1 \times 10^5 \Omega - 1 \times 10^7 \Omega$ (IEC 61340-5-1). **La chaise constitue une mesure de protection DES «secondaire» et ne saurait jamais remplacer la mise à la terre par un bracelet.**

| I | SEDIE DA LAVORO ANTISTATICHE.

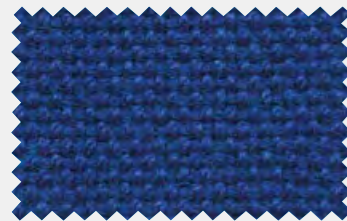
Per ESD (Electro Static Discharge) si intende la scarica elettrostatica di oggetti o persone elettricamente carichi. Una sedia da lavoro antistatica è quindi un criterio fondamentale per attuare affidabili misure protettive ESD su posto di lavoro elettronico. Per le sedie da lavoro vale la resistenza di dispersione: $1 \times 10^5 \Omega - 1 \times 10^7 \Omega$ (IEC 61340-5-1). **La sedia costituisce una misura protettiva ESD «secondaria» e non può mai sostituire una messa a terra mediante nastro da polso.**

PREISGRUPPE 2

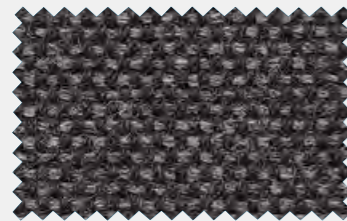
Price category 2 | Catégorie de prix 2 | Categoria di prezzo 2

HI-TECH (CLASSIC)

| D | 100% Polyacryl | | E | 100% Polyacryl | | F | 100% Polyacrylique | | I | 100% Polyacryl



AS004 (CL93)
blau | blue | bleu | blu



AS078 (CL92)
grau meliert | grey mottled | gris moucheté | grigio screziato



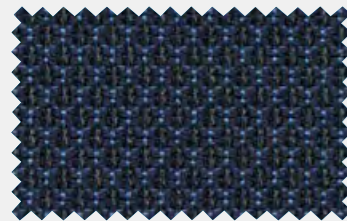
AS064 (CL91)
schwarz | black | noir | nero

PREISGRUPPE 4

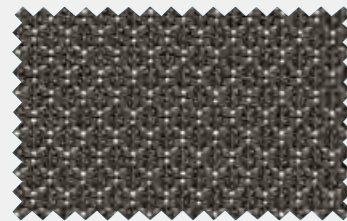
Price category 4 | Catégorie de prix 4 | Categoria di prezzo 4

STRONG

| D | 62% Gradura, 14% zertifizierte Farmwolle, 10% Red. Lenzing FWM. 11% PES 3% MTF | | E | 62% Gradura, 14% certified wgm wool, 10% red. Lenzing FWM. 11% PES 3% MTF | | F | 62% Gradura, 14% certifié laine vierge, 10% Red. Lenzing FWM. 11% PES 3% MTF | | I | 62% Gradura, 14% lana vergine certificato, 10% Red. Lenzing FWM. 11% PES 3% MTF



ST856A (ST95)
blau | blue | bleu | blu



ST931A (ST93)
hellgrau | bright grey | gris clair | grigio chiaro



ST993A (ST94)
dunkelgrau | dark grey | gris foncé | grigio scuro



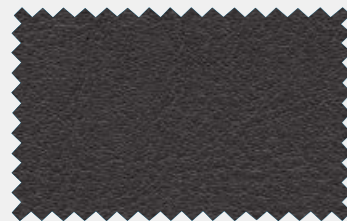
ST999A (ST96)
schwarz | black | noir | nero

climatex®



MEDISTAT

| D | Kunstleder Oberfläche 84,5% PVC, Träger 15% PE | | E | Synthetic leather, surface 84,5% PVC, support 15% PE | | F | Similicuir, surface 84,5% PVC, support 15% PE | | I | Similpelle, superficie 84,5% PVC, supporto 15% PE



MD55083 (MD91)
schwarz | black | noir | nero

ERA

Preisgruppe 1 | Price category 1 | Catégorie de prix 1 | Categoria di prezzo 1

| D |

Material 100% Polyester, ohne schwermetall haltige Farbstoffe
Gewicht 320 g/m²
Lichtechtheit min. 5 (EN ISO 105-B02)
Scheuerfestigkeit ≥ 100.000 Martindale
Feuersicherheit EN 1021-1, EN 1021-2, BS 7176 low hazard

| E |

Material 100% Polyester, without heavy metal dyes
Weight 320 g/m²
Colour fastness min. 5 (EN ISO 105-B02)
Abrasion resistance ≥ 100,000 Martindale
Flammability EN 1021-1, EN 1021-2, BS 7176 low hazard

| F |

Matériau 100% Polyester, sans colorants contenant des métaux lourds
Poids 320 g/m²
Résistance à la lumière min. 5 (EN ISO 105-B02)
Résistance à l'abrasion ≥ 100,000 Martindale
Inflammabilité EN 1021-1, EN 1021-2, BS 7176 low hazard

| I |

Materiale 100% Polyester, senza coloranti con metalli pesanti
Peso 320 g/m²
Solidità alla luce min. 5 (EN ISO 105-B02)
Resistenza allo sfregamento ≥ 100.000 Martindale
Sicurezza antincendio EN 1021-1, EN 1021-2, BS 7176 low hazard

XTREME

Preisgruppe 2 | Price category 2 | Catégorie de prix 2 | Categoria di prezzo 2

| D |

Material 100% Trevira CS
Gewicht 465 g pro lfd. Meter
Breite 140 cm
Lichtechtheit 6-7 (max. 8)
Reibechtheit 4-5 trocken/nass
Scheuerfestigkeit 100.000 Martindale
Feuersicherheit EN 1021 T 162, DIN 4102 BA, BS 7176, HF- P- 92- 503M1

| E |

Material 100% Trevira CS
Weight 465 g per lin. metre
Width 140 cm
Colour fastness 6-7 (max. 8)
Rubbing fastness 4-5 dry/wet
Abrasion resistance 100,000 Martindale
Flammability EN 1021 T 162, DIN 4102 BA, BS 7176, HF- P- 92- 503M1

| F |

Matériau 100% Trevira CS
Poids 465 g par mètre courant
Largeur 140 cm
Résistance à la lumière 6-7 (max. 8)
Résistance au frottement 4-5 sec/humide
Résistance à l'abrasion 100,000 Martindale
Inflammabilité EN 1021 T 162, DIN 4102 BA, BS 7176, HF- P- 92- 503M1

| I |

Materiale 100% Trevira CS
Peso 465 g per mtr.
Larghezza 140 cm
Solidità alla luce 6-7 (max. 8)
Solidità all'abrasione 4-5 secco/umido
Resistenza allo sfregamento 100.000 Martindale
Sicurezza antincendio EN 1021 T 162, DIN 4102 BA, BS 7176, HF- P- 92- 503M1

MEDLEY™

Preisgruppe 2 | Price category 2 | Catégorie de prix 2 | Categoria di prezzo 2

| D |

Material 100% Polyester
Gewicht 510 g pro lfd. Meter
Breite 140 cm
Lichtechtheit 5-7
Reibechtheit 4-5 trocken/nass
Scheuerfestigkeit 75.000 Martindale
Feuersicherheit EN 1021 162

| E |

Material 100% Polyester
Weight 510 g per lin. metre
Width 140 cm
Colour fastness 5-7
Rubbing fastness 4-5 dry/wet
Abrasion resistance 75,000 Martindale
Flammability EN 1021 162

| F |

Matériau 100% Polyester
Poids 510 g au mètre courant
Largeur 140 cm
Résistance à la lumière 5-7
Résistance au frottement 4-5 sec/humide
Résistance à l'abrasion 75,000 Martindale
Inflammabilité EN 1021 162

| I |

Materiale 100% Poliestere
Peso 510 g per metro corrente
Larghezza 140 cm
Solidità alla luce 5-7
Solidità all'abrasione 4-5 secco/umido
Resistenza allo sfregamento 75.000 Martindale
Sicurezza antincendio EN 1021 162

FLEX

 D 		 F 	
Material	100% Polyester	Matériau	100% Polyester
Gewicht	680 g pro lfd. Meter	Poids	680 g au mètre courant
Breite	150 cm	Largeur	150 cm
Lichtechtheit	5 (max. 8)	Résistance à la lumière	5 (max. 8)
Reibechtheit	4–5 trocken/nass	Résistance au frottement	4–5 sec/humide
Scheuerfestigkeit	80.000 Martindale	Résistance à l’abrasion	80 000 Martindale
Feuersicherheit	EN 1021 T 182	Inflammabilité	EN 1021 T 182

 E 		 I 	
Material	100% Polyester	Materiale	100% Poliestere
Weight	680 g per lin. metre	Peso	680 g per metro corrente.
Width	150 cm	Larghezza	150 cm
Colour fastness	5 (max. 8)	Solidità alla luce	5 (max. 8)
Rubbing fastness	4– 5 dry/wet	Resistenza all'abrasione	4–5 secco/umido
Abrasion resistance	80,000 Martindale	Resistenza allo sfregamento	80.000 Martindale
Flammability	EN 1021 T 182	Sicurezza antincendio	EN 1021 T 182

VALENCIA

 D 		 F 	
Deckmaterial	100% Vinyl/Urethan	Matériel de couverture	100% Vinyl/Uréthane
Trägermaterial	Hi-Loft Polyester	Matériel de soutien	Hi-Loft Polyester
Gewicht	650 g/m²	Poids	650 g/m²
Lichtechtheit	5 (EN ISO 105-B02)	Résistance à la lumière	5 (EN ISO 105-B02)
Scheuerfestigkeit	300.000 Martindale	Résistance à l’abrasion	300,000 Martindale
Feuersicherheit	EN 1021-1, EN 1021-2, DIN 4102 B2, NF P 92-503 M2, Önorm A 3800-1 Q1, Önorm B 3825	Inflammabilité	EN 1021-1, EN 1021-2, DIN 4102 B2, NF P 92-503 M2, Önorm A 3800-1 Q1, Önorm B 3825

 E 		 I 	
Cover material	100% Vinyl/Urethane	Materiale di copertura	100% Vinile/Uretano
Support material	Hi-Loft Polyester	Materiale di supporto	Hi-Loft Poliestere
Weight	650 g/m²	Peso	650 g/m²
Colour fastness	5 (EN ISO 105-B02)	Solidità alla luce	5 (EN ISO 105-B02)
Abrasion resistance	300,000 Martindale	Resistenza allo sfregamento	300.000 Martindale
Flammability	EN 1021-1, EN 1021-2, DIN 4102 B2, NF P 92-503 M2, Önorm A 3800-1 Q1, Önorm B 3825	Sicurezza antincendio	EN 1021-1, EN 1021-2, DIN 4102 B2, NF P 92-503 M2, Önorm A 3800-1 Q1, Önorm B 3825

RUNNER™

 D 		 F 	
Material	100% Polyester	Matériau	100% Polyester
Gewicht	510 g pro lfd. Meter	Poids	510 g au mètre courant
Breite	160 cm	Largeur	160 cm
Lichtechtheit	5 – 7	Résistance à la lumière	5 – 7
Reibechtheit	4–5 trocken/nass	Résistance au frottement	4–5 sec/humide
Scheuerfestigkeit	70.000 Martindale	Résistance à l’abrasion	70 000 Martindale
Feuersicherheit	EN 1021 T 182	Inflammabilité	EN 1021 T 182

 E 		 I 	
Material	100% Polyester	Materiale	100% Poliestere
Weight	510 g per lin. metre	Peso	510 g per metro corrente
Width	160 cm	Larghezza	160 cm
Colour fastness	5 – 7	Solidità alla luce	5 – 7
Rubbing fastness	4– 5 dry/wet	Solidità all'abrasione	4–5 secco/umido
Abrasion resistance	70,000 Martindale	Resistenza allo sfregamento	70.000 Martindale
Flammability	EN 1021 T 182	Sicurezza antincendio	EN 1021 T 182

SILVERTEX

 D 		 F 	
Deckmaterial	100% Vinyl/Urethan	Matériel de couverture	100% Vinyl/Uréthane
Trägermaterial	Hi-Loft Polyester	Matériel de soutien	Hi-Loft Polyester
Gewicht	685 g/m²	Poids	685 g/m²
Lichtechtheit	Xenotest DIN 54004 / NTC 1479 – Blauwollskala, 1.000 Stunden < 7	Résistance à la lumière	Xenotest DIN 54004 / NTC 1479 – échelle de laine bleue, 1.000 heures < 7
Scheuerfestigkeit	> 300.000 Martindale	Résistance à l’abrasion	> 300.000 Martindale
Feuersicherheit	EN 1021-1, EN 1021-2 DIN 4102 B2, NF P 92-503 M2 Önorm B 3825, Önorm A 3800-1 Q1	Inflammabilité	EN 1021-1, EN 1021-2 DIN 4102 B2, NF P 92-503 M2 Önorm B 3825, Önorm A 3800-1 Q1

 E 		 I 	
Cover material	100% Vinyl/Urethane	Materiale di copertura	100% Vinile/Uretano
Support material	Hi-Loft Polyester	Materiale di supporto	Hi-Loft Poliestere
Weight	685 g/m²	Peso	685 g/m²
Colour fastness	Xenotest DIN 54004 / NTC 1479 – blue wool scale, 1,000 hours: < 7	Solidità alla luce	Xenotest DIN 54004 / NTC 1479 – blue wool scale, 1,000 hours: < 7
Abrasion resistance	> 300.000 Martindale	Resistenza allo sfregamento	> 300.000 Martindale
Flammability	EN 1021-1, EN 1021-2 DIN 4102 B2, NF P 92-503 M2 Önorm B 3825, Önorm A 3800-1 Q1	Sicurezza antincendio	EN 1021-1, EN 1021-2 DIN 4102 B2, NF P 92-503 M2 Önorm B 3825, Önorm A 3800-1 Q1

Preisgruppe 2 | Price category 2 | Catégorie de prix 2 | Categoria di prezzo 2

 F 		 I 	
Material	100% Polyester	Materiale	100% Poliestere
Gewicht	680 g au mètre courant	Peso	680 g per metro corrente.
Largeur	150 cm	Larghezza	150 cm
Résistance à la lumière	5 (max. 8)	Solidità alla luce	5 (max. 8)
Résistance au frottement	4–5 sec/humide	Resistenza all'abrasione	4–5 secco/umido
Résistance à l’abrasion	80 000 Martindale	Resistenza allo sfregamento	80.000 Martindale
Inflammabilité	EN 1021 T 182	Sicurezza antincendio	EN 1021 T 182

 I 		 I 	
Materiale	100% Poliestere	Materiale	100% Poliestere
Peso	680 g per metro corrente.	Peso	680 g per metro corrente.
Larghezza	150 cm	Larghezza	150 cm
Solidità alla luce	5 (max. 8)	Solidità alla luce	5 (max. 8)
Resistenza all'abrasione	4–5 secco/umido	Resistenza all'abrasione	4–5 secco/umido
Resistenza allo sfregamento	80.000 Martindale	Resistenza allo sfregamento	80.000 Martindale
Sicurezza antincendio	EN 1021 T 182	Sicurezza antincendio	EN 1021 T 182

Preisgruppe 2 | Price category 2 | Catégorie de prix 2 | Categoria di prezzo 2

 F 		 I 	
Matériel de couverture	100% Vinyl/Uréthane	Materiale di copertura	100% Vinile/Uretano
Matériel de soutien	Hi-Loft Polyester	Materiale di supporto	Hi-Loft Poliestere
Poids	650 g/m²	Peso	650 g/m²
Résistance à la lumière	5 (EN ISO 105-B02)	Solidità alla luce	5 (EN ISO 105-B02)
Résistance à l’abrasion	300,000 Martindale	Resistenza allo sfregamento	300.000 Martindale
Inflammabilité	EN 1021-1, EN 1021-2, DIN 4102 B2, NF P 92-503 M2, Önorm A 3800-1 Q1, Önorm B 3825	Sicurezza antincendio	EN 1021-1, EN 1021-2, DIN 4102 B2, NF P 92-503 M2, Önorm A 3800-1 Q1, Önorm B 3825

 I 		 I 	
Materiale di copertura	100% Vinile/Uretano	Materiale di copertura	100% Vinile/Uretano
Materiale di supporto	Hi-Loft Poliestere	Materiale di supporto	Hi-Loft Poliestere
Peso	650 g/m²	Peso	650 g/m²
Solidità alla luce	5 (EN ISO 105-B02)	Solidità alla luce	5 (EN ISO 105-B02)
Resistenza allo sfregamento	300.000 Martindale	Resistenza allo sfregamento	300.000 Martindale
Sicurezza antincendio	EN 1021-1, EN 1021-2, DIN 4102 B2, NF P 92-503 M2, Önorm A 3800-1 Q1, Önorm B 3825	Sicurezza antincendio	EN 1021-1, EN 1021-2, DIN 4102 B2, NF P 92-503 M2, Önorm A 3800-1 Q1, Önorm B 3825

Preisgruppe 3 | Price category 3 | Catégorie de prix 3 | Categoria di prezzo 3

 F 		 I 	
Matériau	100% Polyester	Materiale	100% Poliestere
Poids	510 g au mètre courant	Peso	510 g per metro corrente
Largeur	160 cm	Larghezza	160 cm
Résistance à la lumière	5 – 7	Solidità alla luce	5 – 7
Résistance au frottement	4–5 sec/humide	Solidità all'abrasione	4–5 secco/umido
Résistance à l’abrasion	70 000 Martindale	Resistenza allo sfregamento	70.000 Martindale
Inflammabilité	EN 1021 T 182	Sicurezza antincendio	EN 1021 T 182

 I 		 I 	
Materiale	100% Poliestere	Materiale	100% Poliestere
Peso	510 g per metro corrente	Peso	510 g per metro corrente
Larghezza	160 cm	Larghezza	160 cm
Solidità alla luce	5 – 7	Solidità alla luce	5 – 7
Solidità all'abrasione	4–5 secco/umido	Solidità all'abrasione	4–5 secco/umido
Resistenza allo sfregamento	70.000 Martindale	Resistenza allo sfregamento	70.000 Martindale
Sicurezza antincendio	EN 1021 T 182	Sicurezza antincendio	EN 1021 T 182

Preisgruppe 3 | Price category 3 | Catégorie de prix 3 | Categoria di prezzo 3

 F 		 I 	
Matériel de couverture	100% Vinyl/Uréthane	Materiale di copertura	100% Vinile/Uretano
Matériel de soutien	Hi-Loft Polyester	Materiale di supporto	Hi-Loft Poliestere
Poids	685 g/m²	Peso	685 g/m²
Résistance à la lumière	Xenotest DIN 54004 / NTC 1479 –	Solidità alla luce	Xenotest DIN 54004 / NTC 1479 –
Résistance à l’abrasion	échelle de laine bleue, 1.000 heures < 7	Resistenza allo sfregamento	blue wool scale, 1,000 hours: < 7
Inflammabilité	> 300.000 Martindale	Sicurezza antincendio	> 300.000 Martindale
	EN 1021-1, EN 1021-2 DIN 4102 B2, NF P 92-503 M2 Önorm B 3825, Önorm A 3800-1 Q1		EN 1021-1, EN 1021-2 DIN 4102 B2, NF P 92-503 M2 Önorm B 3825, Önorm A 3800-1 Q1

 I 		 I 	
Materiale di copertura	100% Vinile/Uretano	Materiale di copertura	100% Vinile/Uretano
Materiale di supporto	Hi-Loft Poliestere	Materiale di supporto	Hi-Loft Poliestere
Peso	685 g/m²	Peso	685 g/m²
Solidità alla luce	Xenotest DIN 54004 / NTC 1479 – blue wool scale, 1,000 hours: < 7	Solidità alla luce	Xenotest DIN 54004 / NTC 1479 – blue wool scale, 1,000 hours: < 7
Resistenza allo sfregamento	> 300.000 Martindale	Resistenza allo sfregamento	> 300.000 Martindale
Sicurezza antincendio	EN 1021-1, EN 1021-2 DIN 4102 B2, NF P 92-503 M2 Önorm B 3825, Önorm A 3800-1 Q1	Sicurezza antincendio	EN 1021-1, EN 1021-2 DIN 4102 B2, NF P 92-503 M2 Önorm B 3825, Önorm A 3800-1 Q1

STEP / STEP MELIERT

 D 		 F 	
Material	100% Trevira CS	Matériau	100% Trevira CS
Gewicht	335 g pro lfd. Meter	Poids	335 g par mètre courant
Breite	140 cm	Largeur	140 cm
Lichtechtheit	EN ISO 105-B02, 5-7	Résistance à la lumière	EN ISO 105-B02, 5-7
Reibechtheit	EN ISO 105-X12, 4–5 nass/trocken	Résistance au frottement	EN ISO 105-X12, 4-5 sec/humide
Scheuerfestigkeit	100.000 Martindale	Résistance à l’abrasion	100,000 Martindale
Pilling	EN ISO 12945-2 4-5	Boulochage	EN ISO 12945-2 4-5
Feuersicherheit	EN 1021-1, EN 1021-2, BS 5852 Crib 5, BS 7176 medium hazard, DIN 4102 B1, NF P 92-503-5 M1, NF D 60-013 AM 18, Calif. Bull. 117E	Inflammabilité	EN 1021-1, EN 1021-2, BS 5852 Crib 5, BS 7176 medium hazard, DIN 4102 B1, NF P 92-503-5 M1, NF D 60-013 AM 18, Calif. Bull. 117E

 E 		 I 	
Material	100% Trevira CS	Materiale	100% Trevira CS
Weight	335 g per lin. metre	Peso	335 g per mtr.
Width	140 cm	Larghezza	140 cm
Colour fastness	EN ISO 105-B02, 5-7	Solidità alla luce	EN ISO 105-B02, 5-7
Rubbing fastness	EN ISO 105-X12, 4-5 dry/wet	Solidità all'abrasione	EN ISO 105-X12, 4-5 secco/umido
Abrasion resistance	100,000 Martindale	Resistenza allo sfregamento	100.000 Martindale
Pilling	EN ISO 12945-2 4-5	Pilling	EN ISO 12945-2 4-5
Flammability	EN 1021-1, EN 1021-2, BS 5852 Crib 5, BS 7176 medium hazard, DIN 4102 B1, NF P 92-503-5 M1, NF D 60-013 AM 18, Calif. Bull. 117E	Sicurezza antincendio	EN 1021-1, EN 1021-2, BS 5852 Crib 5, BS 7176 medium hazard, DIN 4102 B1, NF P 92-503-5 M1, NF D 60-013 AM 18, Calif. Bull. 117E

SYNERGY

 D 		 F 	
Material	95% Schurwolle, 5% Polyamid	Matériau	95% Laine Vierge, 5% Polyamid
Gewicht	400 g/m²	Poids	400 g/m²
Lichtechtheit	5 (EN ISO 105-B02)	Résistance à la lumière	5 (EN ISO 105-B02)
Reibechtheit	4 trocken, 5 nass (ISO 105 - X12)	Résistance au frottement	4 sec, 5 humide
Scheuerfestigkeit	≥100 000 Martindale	Résistance à l’abrasion	≥100 000 Martindale
Feuersicherheit	EN 1021-1, EN 1021-2, BS 7176 low hazard, NF D 60-013, Önorm A 3800-1 Q1, Önorm B 3825	Inflammabilité	EN 1021-1, EN 1021-2, BS 7176 low hazard, NF D 60-013, Önorm A 3800-1 Q1, Önorm B 3825

 E 		 I 	
Material	95% Virgin Wool, 5% Polyamide	Materiale	95% Lana vergine, 5% Poliammide
Weight	400 g/m2	Peso	400 g/m²
Colour fastness	5 (EN ISO 105-B02)	Solidità alla luce	5 (EN ISO 105-B02)
Rubbing fastness	4 dry, 5 wet	Solidità all'abrasione	4 secco, 5 umido
Abrasion resistance	≥100 000 Martindale	Resistenza allo sfregamento	≥100.000 Martindale
Flammability	EN 1021-1, EN 1021-2, BS 7176 low hazard, NF D 60-013, Önorm A 3800-1 Q1, Önorm B 3825	Sicurezza antincendio	EN 1021-1, EN 1021-2, BS 7176 low hazard, NF D 60-013, Önorm A 3800-1 Q1, Önorm B 3825

MAIN LINE FLAX

 D 		 F 	
Material	75% Schurwolle, 25% Flachs	Matériau	75% Laine Vierge, 25% Lin
Gewicht	437 g pro lfd. Meter	Poids	437 g par mètre courant
Breite	140 cm	Largeur	140 cm
Lichtechtheit	4-5 (ISO 105 - B02)	Résistance à la lumière	4-5 (ISO 105 - B02)
Reibechtheit	nass 3, trocken 4 (ISO 105 - X12)	Résistance au frottement	humide 3, sec 4 (ISO 105 - X12)
Scheuerfestigkeit	≥50.000 Martindale	Résistance à l’abrasion	≥50.000 Martindale
Feuersicherheit	EN 1021-1, EN 1021-2, BS 7176 medium hazard, ÖNORM B 3825 & A 3800-1 (58 kg/m3 CMHR Foam), UNI 9175 Classe 1IM, BS 5852 Crib 5, NF D 60-013 AM 18	Inflammabilité	EN 1021-1, EN 1021-2, BS 7176 medium hazard, ÖNORM B 3825 & A 3800-1 (58 kg/m3 CMHR Foam), UNI 9175 Classe 1IM, BS 5852 Crib 5, NF D 60-013 AM 18

 E 		 I 	
Material	75% Virgin Wool, 25% Flax	Materiale	75% Lana Vergine, 25% Lino
Weight	437 g per lin. metre	Peso	437 g per metro corrente
Width	140 cm	Larghezza	140 cm
Colour fastness	4-5 (ISO 105 - B02)	Solidità alla luce	4-5 (ISO 105 - B02)
Rubbing fastness	wet 3, dry 4 (ISO 105 - X12)	Solidità all'abrasione	umido 3, secco 4 (ISO 105 - X12)
Abrasion resistance	≥50.000 Martindale	Resistenza allo sfregamento	≥50.000 Martindale
Flammability	EN 1021-1, EN 1021-2, BS 7176		

STRONG

Preisgruppe 4 | Price category 4 | Catégorie de prix 4 | Categoria di prezzo 4

 D 			
Material	62% Gradura, 14% zertifizierte Farmwolle 10% Red. Lenzing FWM. 11% PES 3% MTF		
Gewicht	448 g pro lfd. Meter		
Breite	141 cm. Nutzbreite 139 cm		
Lichtechtheit	6 – 7		
Reibechtheit	4-5 trocken/nass		
Scheuerfestigkeit	>500'000 Martindale (ISO 12947-2)		
Feuersicherheit	EN 1021 part 1+2, BS 5852 part 0+1 IMO Resolution MSG 307 (88); Annex 1, Part 8 California TB 117, Class		

 E 			
Material	62% Gradura, 14% certified wgm wool, 10% red. Lenzing FWM. 11% PES 3% MTF		
Weight	448 g per lin. metre		
Width	141 cm. useable width 139 cm		
Colour fastness	6 – 7		
Rubbing fastness	4-5 dry/wet		
Abrasion resistance	>500'000 Martindale (ISO 12947-2)		
Flammability	EN 1021 part 1+2, BS 5852 part 0+1 IMO Resolution MSG 307 (88); Annex 1, Part 8 California TB 117, Class		

 F 			
Matériau	62% Gradura, 14% zertifizierte Farmwolle 10% Red. Lenzing FWM. 11% PES 3% MTF		
Poids	448 g par mètre courant		
Largeur	141 cm. largeur utile 139 cm		
Résistance à la lumière	6 – 7		
Résistance au frottement	4-5 sec/humide		
Résistance à l'abrasion	>500'000 Martindale (ISO 12947-2)		
Inflammabilité	EN 1021 part 1+2, BS 5852 part 0+1 IMO Resolution MSG 307 (88); Annex 1, Part 8 California TB 117, Class		

 I 			
Materiale	62% Gradura, 14% lana vergine certificato, 10% Red. Lenzing FWM. 11% PES 3% MTF		
Peso	448 g per metro corrente		
Larghezza	141 cm, larghezza utile 139 cm		
Solidità alla luce	6 – 7		
Solidità all'abrasione	4-5 secco/umido		
Resistenza allo sfregamento	>500'000 Martindale (ISO 12947-2)		
Sicurezza antincendio	EN 1021 part 1+2, BS 5852 part 0+1 IMO Resolution MSG 307 (88); Annex 1, Part 8 California TB 117, Class		

REMIX 3

Preisgruppe 5 | Price category 5 | Catégorie de prix 5 | Categoria di prezzo 5

 D 			
Material	90% Schurwolle, 10% Nylon		
Gewicht	420 g/lm		
Breite	140 cm		
Lichtechtheit	6-7 (ISO 105-B02)		
Reibechtheit	4-5 trocken/nass (ISO 105-X12)		
Scheuerfestigkeit	100.000 Martindale		
Feuersicherheit	AS/NZS 1530.3, AS/NZS 3837 class 2, EN 1021-1/2, BS 5852 Part 1, UNI 9175 1IM, US Cal. Bull. 117-2013, ÖNORM B1/Q1		

 E 			
Material	90% New Wool, 10% Nylon		
Weight	420 g/lin.m		
Width	140 cm		
Colour fastness	6-7 (ISO 105-B02)		
Rubbing fastness	4-5 dry/wet (ISO 105-X12)		
Abrasion resistance	100,000 Martindale		
Flammability	AS/NZS 1530.3, AS/NZS 3837 class 2, EN 1021-1/2, BS 5852 Part 1, UNI 9175 1IM, US Cal. Bull. 117-2013, ÖNORM B1/Q1		

 F 			
Matériau	90% Laine nouvelle, 10% Nylon		
Poids	420 g par mètre courant		
Largeur	140 cm		
Résistance à la lumière	6-7 (ISO 105-B02)		
Résistance au frottement	4-5 sec/humide (ISO 105-B02)		
Résistance à l'abrasion	100,000 Martindale		
Inflammabilité	AS/NZS 1530.3, AS/NZS 3837 class 2, EN 1021-1/2, BS 5852 Part 1, UNI 9175 1IM, US Cal. Bull. 117-2013, ÖNORM B1/Q1		

 I 			
Materiale	90% lana vergine, 10% nylon		
Peso	420 g per mtr.		
Larghezza	140 cm		
Solidità alla luce	6-7 (ISO 105-B02)		
Solidità all'abrasione	4-5 secco/umido (ISO 105-X12)		
Resistenza allo sfregamento	100.000 Martindale		
Sicurezza antincendio	AS/NZS 1530.3, AS/NZS 3837 class 2, EN 1021-1/2, BS 5852 Part 1, UNI 9175 1IM, US Cal. Bull. 117-2013, ÖNORM B1/Q1		

SELECT

Preisgruppe Leder | Price category leather | Catégorie de prix cuir | Categoria di prezzo pelle

 D 			
Material	Feinnarbiges Nappaleder		
Lichtechtheit	5		
Reibechtheit	4 trocken/nass		
Feuersicherheit	BS 5852 Part 1 (Ignition source 0 and 1) EN 1021-1, California TB 117 A/1 ISO 8191 part 1, BS 5852 Part 1 (Ignition source 2), EN 1021-2, California TB 117 E/1, ISO 8191 part 2		

 E 			
Material	Nappa leather with smooth grain structure		
Colour fastness	5		
Rubbing fastness	4 dry/wet		
Flammability	BS 5852 Part 1 (Ignition source 0 and 1) EN 1021-1, California TB 117 A/1 ISO 8191 part 1, BS 5852 Part 1 (Ignition source 2), EN 1021-2, California TB 117 E/1, ISO 8191 part 2		

 F 			
Matériau	Cuir nappa avec grain fin et élégant		
Résistance à la lumière	5		
Résistance au frottement	4 sec/humide		
Inflammabilité	BS 5852 Part 1 (Ignition source 0 and 1) EN 1021-1, California TB 117 A/1 ISO 8191 part 1, BS 5852 Part 1 (Ignition source 2), EN 1021-2, California TB 117 E/1, ISO 8191 part 2		

 I 			
Materiale	Nappa a grana fine		
Solidità alla luce	5		
Resistenza allo sfregamento	4 secco/umido		
Sicurezza antincendio	BS 5852 Part 1 (Ignition source 0 and 1) EN 1021-1, California TB 117 A/1 ISO 8191 part 1, BS 5852 Part 1 (Ignition source 2), EN 1021-2, California TB 117 E/1, ISO 8191 part 2		

HI-TEC (CLASSIC)

leitfähig | conductive | conductible

Preisgruppe 2 | Price category 2 | Catégorie de prix 2 | Categoria di prezzo 2

 D 			
Material	100% Polyacryl		
Gewicht	560 g pro lfd. Meter		
Breite	140 cm		
Lichtechtheit	6-7 (max. 8)		
Reibechtheit	4-5 trocken/nass		
Scheuerfestigkeit	40.000 Martindale		

 E 			
Material	100% Polyacryl		
Weight	560 g per lin. metre		
Width	140 cm		
Colour fastness	6-7 (max. 8)		
Rubbing fastness	4-5 dry/wet		
Abrasion resistance	40,000 Martindale		

 F 			
Matériau	100% Polyacryl		
Poids	560 g au mètre courant		
Largeur	140 cm		
Résistance à la lumière	6-7 (max. 8)		
Résistance au frottement	4-5 sec/humide		
Résistance à l'abrasion	40 000 Martindale		

 I 			
Materiale	100% Polyacryl		
Peso	560 g per metro corrente		
Larghezza	140 cm		
Solidità alla luce	6-7 (max. 8)		
Solidità all'abrasione	4-5 secco/umido		
Resistenza allo sfregamento	40.000 Martindale		

STRONG

leitfähig | conductive | conductible

Preisgruppe 4 | Price category 4 | Catégorie de prix 4 | Categoria di prezzo 4

 D 			
Material	62% Gradura, 14% zertifizierte Farmwolle 10% Red. Lenzing FWM. 11% PES 3% MTF		
Gewicht	448 g pro lfd. Meter		
Breite	141 cm. Nutzbreite 139 cm		
Lichtechtheit	6 – 7		
Reibechtheit	4-5 trocken/nass		
Scheuerfestigkeit	>500'000 Martindale (ISO 12947-2)		
Feuersicherheit	EN 1021 part 1+2, BS 5852 part 0+1 IMO Resolution MSG 307 (88); Annex 1, Part 8 California TB 117, Class		

 E 			
Material	62% Gradura, 14% certified wgm wool, 10% red. Lenzing FWM. 11% PES 3% MTF		
Weight	448 g per lin. metre		
Width	141 cm. useable width 139 cm		
Colour fastness	6 – 7		
Rubbing fastness	4-5 dry/wet		
Abrasion resistance	>500'000 Martindale (ISO 12947-2)		
Flammability	EN 1021 part 1+2, BS 5852 part 0+1 IMO Resolution MSG 307 (88); Annex 1, Part 8 California TB 117, Class		

 F 			
Matériau	62% Gradura, 14% zertifizierte Farmwolle 10% Red. Lenzing FWM. 11% PES 3% MTF		
Poids	448 g par mètre courant		
Largeur	141 cm. largeur utile 139 cm		
Résistance à la lumière	6 – 7		
Résistance au frottement	4-5 sec/humide		
Résistance à l'abrasion	>500'000 Martindale (ISO 12947-2)		
Inflammabilité	EN 1021 part 1+2, BS 5852 part 0+1 IMO Resolution MSG 307 (88); Annex 1, Part 8 California TB 117, Class		

 I 			
Materiale	62% Gradura, 14% lana vergine certificato, 10% Red. Lenzing FWM. 11% PES 3% MTF		
Peso	448 g per metro corrente		
Larghezza	141 cm, larghezza utile 139 cm		
Solidità alla luce	6 – 7		
Solidità all'abrasione	4-5 secco/umido		
Resistenza allo sfregamento	>500'000 Martindale (ISO 12947-2)		
Sicurezza antincendio	EN 1021 part 1+2, BS 5852 part 0+1 IMO Resolution MSG 307 (88); Annex 1, Part 8 California TB 117, Class		

MEDISTAT KUNSTLEDER

leitfähig | conductive | conductible

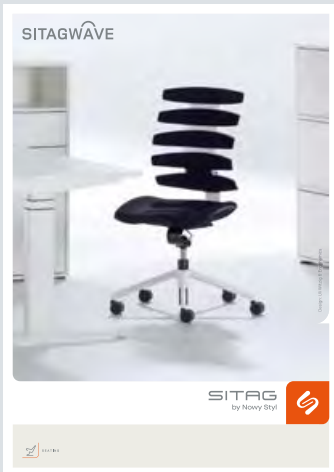
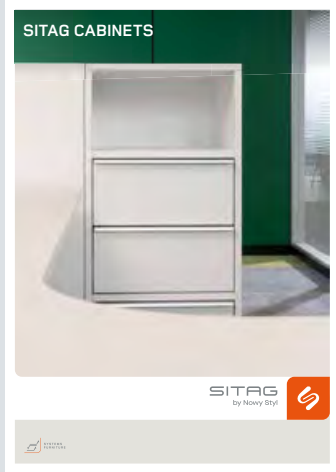
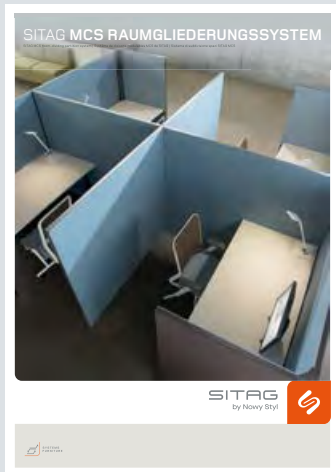
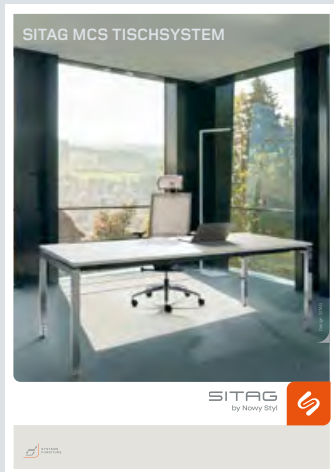
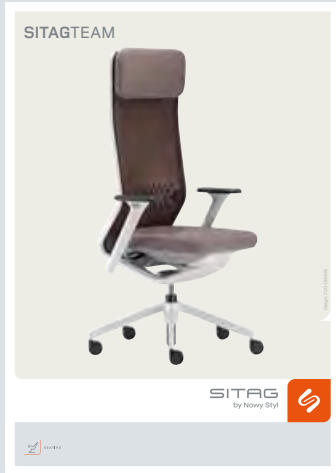
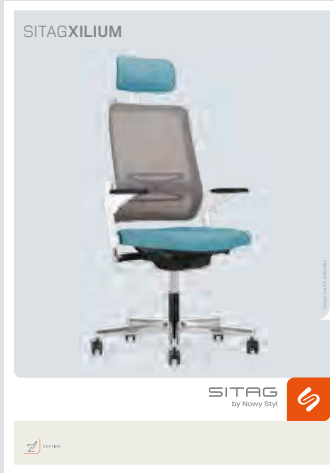
Preisgruppe 4 | Price category 4 | Catégorie de prix 4 | Categoria di prezzo 4

 D 			
Oberfläche	84,5% PVC		
Träger	15 % PE		
Gewicht	580 g/m²		
Breite	140 cm		
Lichtechtheit	>6		
Reibechtheit	4 – 5 trocken, 4 – 5 nass		
Scheuerfestigkeit	NFG 35105, > 1000		
Feuersicherheit	EN 1021.1 Schedule 4 Part 1 / 5 Part 1		

 E 			
Surface	84,5% PVC		
Support	15 % PE		
Weight	580 g/m²		
Width	140 cm		
Colour fastness	>6		
Rubbing fastness	4 – 5 dry, 4 – 5 wet		
Abrasion resistance	NFG 35105, > 1000		
Flammability	EN 1021.1 Schedule 4 Part 1 / 5 Part 1		

 F 			
Surface	84,5% PVC		
Support	15 % PE		
Poids courant	580 g/m²		
Largeur	140 cm		
Resistance à la lumiere	>6		
Resistance au frottement	4 – 5 sec / 4 – 5 humide		
Résistance à l'abrasion	NFG 35105, > 1000		
Inflammabilité	EN 1021.1 Schedule 4 Part 1 / 5 Part 1		

 I 			
Superficie	84,5% PVC		
Supporto	15 % PE		
Peso	580 g/m²		
Larghezza	140 cm		
Solidità alla luce	>6		
Solidità all'abrasione	4 – 5 secco / 4 – 5 umido		
Resistenza allo sfregamento	NFG 35105, > 1000		
Sicurezza antincendio	EN 1021.1 Schedule 4 Part 1 / 5 Part 1		



| D | Technische Änderungen, Druckfehler und Programmänderungen vorbehalten. Farbabweichungen von den Originalfarben sind drucktechnisch bedingt.
| E | Subject to technical and programme alterations, printing errors, and other errors. Printed colours may vary from actual colours.
| F | Sous réserve de modifications techniques, d'erreurs d'impression et d'altérations du programme. Les couleurs reproduites peuvent différer des couleurs originales.
| I | Con riserva di modifiche tecniche, errori di stampa e cambiamenti di programma. Eventuali differenze di colore tra le immagini e i prodotti reali sono dovute alla stampa.



SITAG by Nowy Styl SA
 Fléchères 7A
 CH-1274 Signy
 T +41 22 3614727
 info.nyon@sitag.ch

SITAG by Nowy Styl AG
 Brown-Boveri-Str. 5
 CH-8050 Zurich-Oerlikon
 T +41 44 8637272
 info.zuerich@sitag.ch

Nowy Styl Headquarters
 ul. Pużaka 49
 PL-38-400 Krosno
 T +48 572 900 333
 sales@nowystyl.com

SITAG by Nowy Styl AG
 Simon Frick-Str. 3a
 CH-9466 Sennwald

T +41 81 7581818
 info@sitag.ch
 www.sitag.ch

